

BYLAW NO. LU 30/25

Being a Bylaw of Mountain View County in the Province of Alberta to amend Land Use Bylaw No. 10/24 affecting NW 3-29-4-5 pursuant to the Municipal Government Act.

The Council of Mountain View County, duly assembled, enacts that Bylaw No. 10/24 be amended as follows:

To redesignate from Agricultural District (A) to Agricultural (2) District (A(2)) an approximate forty point zero zero (40.00) acres (16.18 hectares) in the Northwest (NW) Quarter of Section three (3), Township twenty-nine (29), Range four (4), West of the Fifth (5th) Meridian, as outlined on Schedule "A" attached hereto.

Received first reading July 09, 2025,

Received second reading _____,

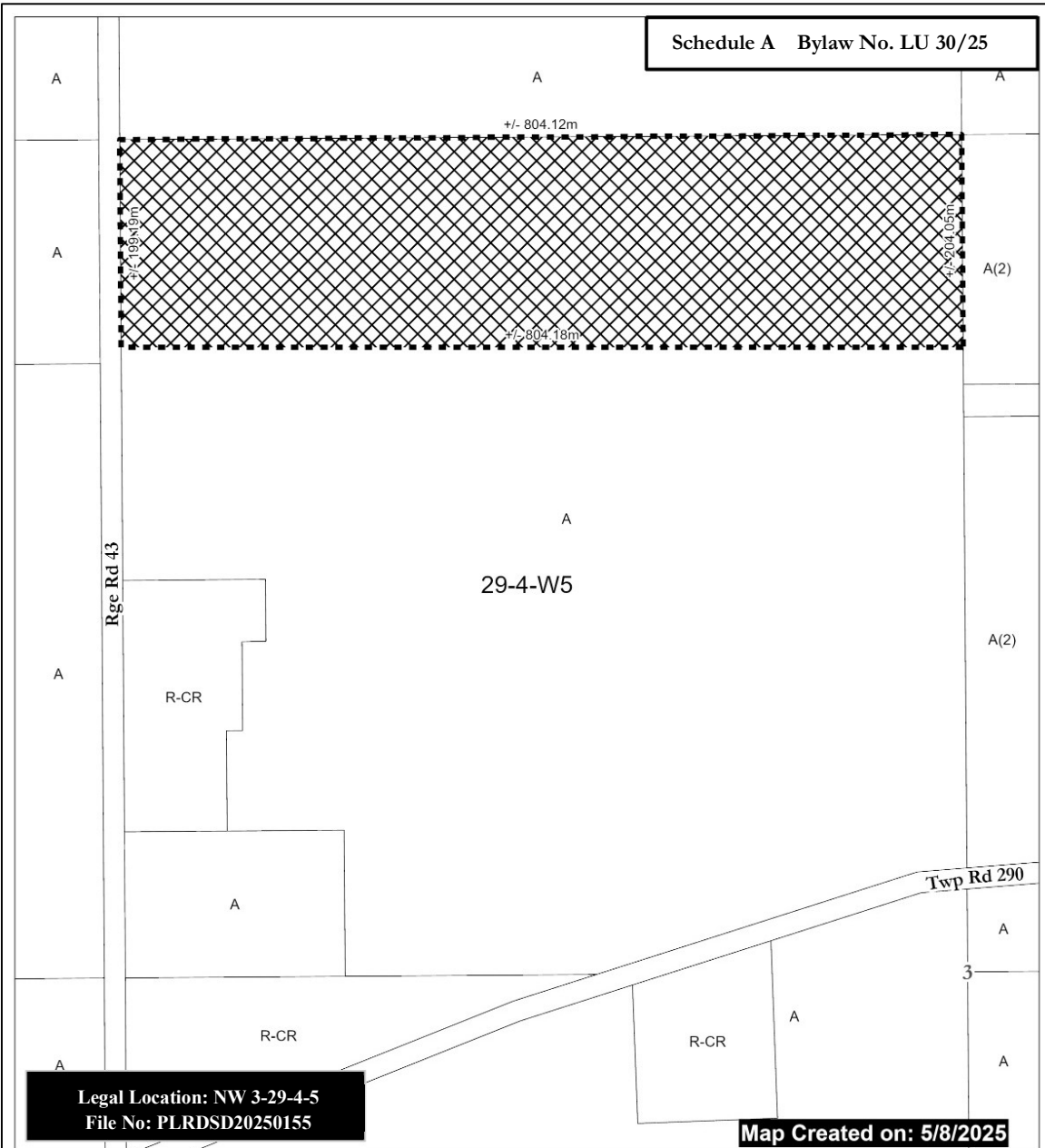
Received third reading _____.

Reeve

Chief Administrative Officer

Date of Signing

Schedule A Bylaw No. LU 30/25



From A to A(2)
(+/-) 40.00 ac (16.18 Ha)

A = Agricultural District
A(2) = Agricultural (2) District
R-CR = Country Residential District
R-CR1 = Country Residential (1) District
RF = Residential Farmstead District
C-LC = Local Commercial District
I-BP = Business Park District
I-HI = Heavy Industrial District
P-PC = Parks and Conservation District

P-PR = Parks and Recreation District
P-PCR = Parks and Comprehensive Recreational District
S-IEC = Institutional, Educational and Cultural District
S-AP = Airport District
DC = Direct Control
AEP = Aggregate Extraction / Processing District



0 25 50 Meters

Scale: 1:5,000

Mountain View County

NAD_1983_CSRS_00TM_AEP_Forest
Projection: Transverse_Mercator