



## Mountain View C O U N T Y

### Location, Land Use, Ownership & Circulation

#### Legend

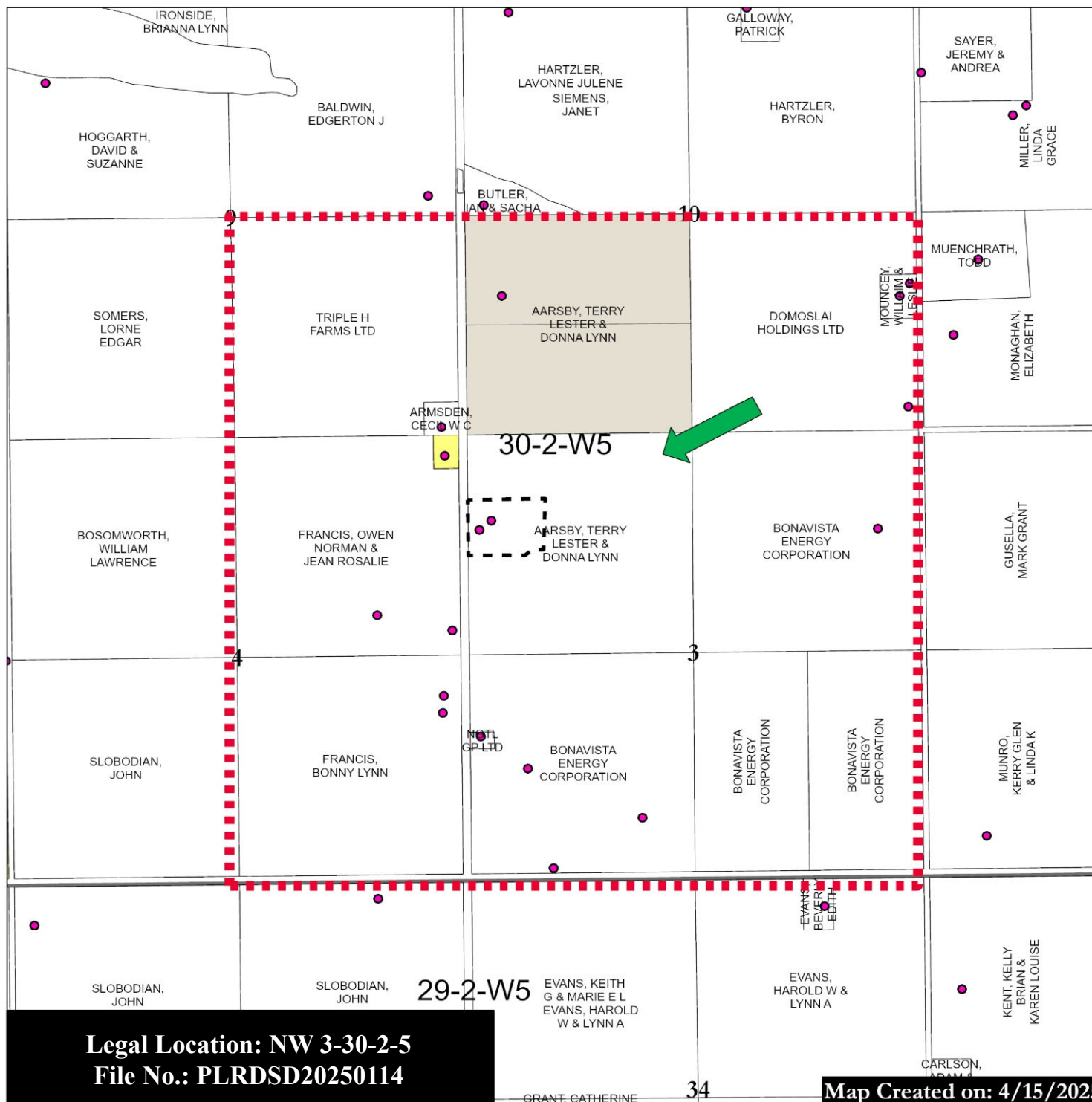
- Rural Address
- Proposed Redesignation Subdivision Boundary
- Land Use Zoning**
  - Agricultural District (A)
  - Agricultural (2) District (A(2))
  - Country Residential District (R-CR)
  - Country Residential (1) District (R-CR1)
  - Residential Farmstead District (R-F)
  - Local Commercial District (C-LC)
  - Business Park District (I-BP)
  - Heavy Industrial District (I-HI)
  - Aggregate Extraction/Processing District (AEP)
  - Parks and Conservation District (P-PC)
  - Parks and Recreation District (P-PR)
  - Parks and Comprehensive Recreational District (P-PCR)
  - Institutional, Educational and Cultural District (S-IEC)
  - Airport District (S-AP)
  - Direct Control
- Subject Land
- Landowners Circulated



0 250 500 1,000 Meters

Scale: 1:20,000

Mountain View County  
NAD\_1983\_CSRS\_10TM\_AEP\_Forest  
Projection: Transverse Mercator



**Legal Location: NW 3-30-2-5**  
**File No.: PLRDS20250114**

**Map Created on: 4/15/2025**