

BYLAW NO. LU 37/25

Being a Bylaw of Mountain View County in the Province of Alberta to amend Land Use Bylaw No. 10/24 affecting SE 20-30-4-5 pursuant to the Municipal Government Act.

---

The Council of Mountain View County, duly assembled, enacts that Bylaw No. 10/24 be amended as follows:

To redesignate from Agricultural District (A) to Country Residential District (R-CR) an approximate five point five four (5.54) acres (2.24 hectares) in the Southeast (SE) Quarter of Section twenty (20), Township thirty (30), Range four (4), West of the fifth (5<sup>th</sup>) Meridian, as outlined on Schedule "A" attached hereto.

Received first reading September 10, 2025,

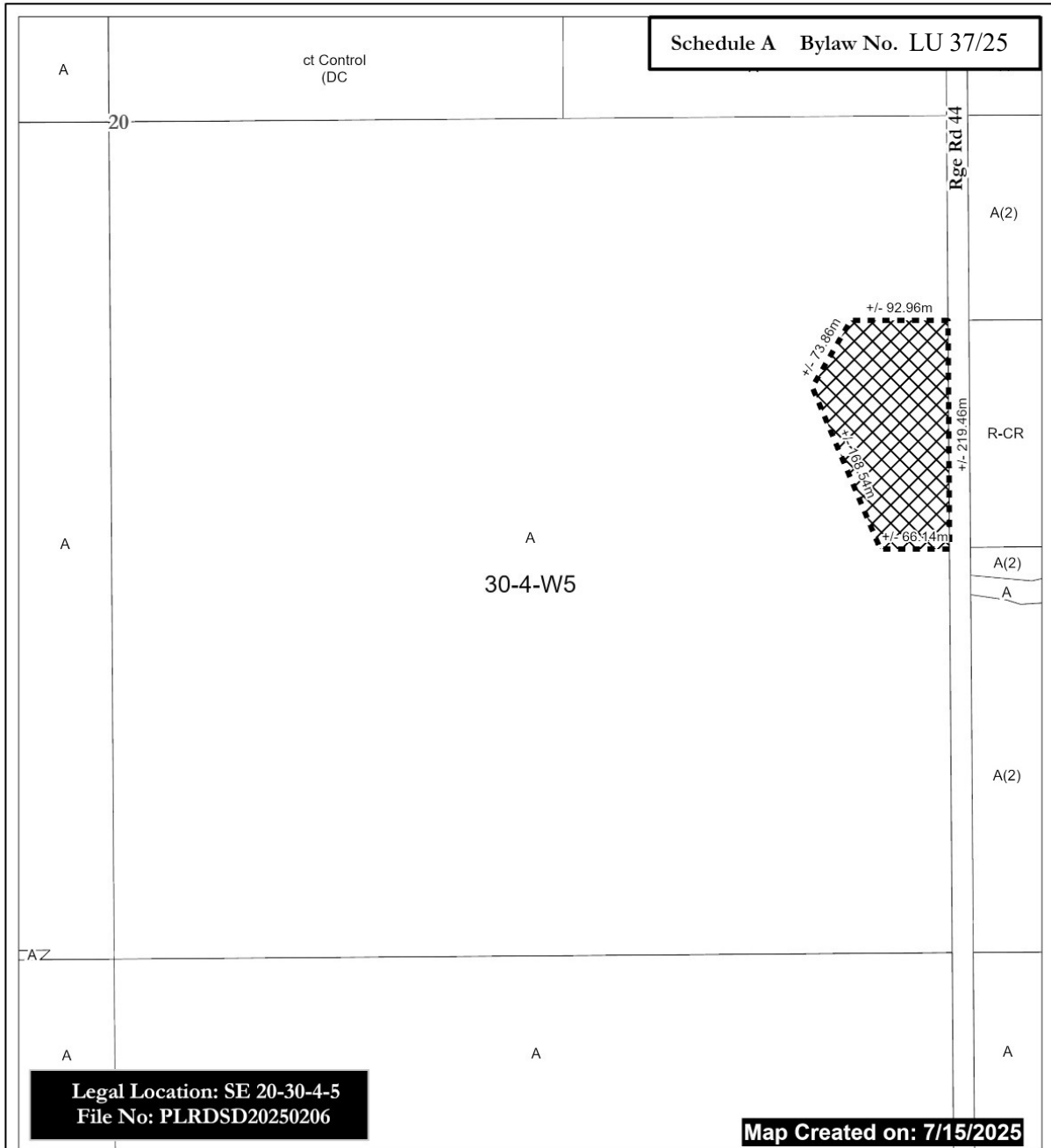
Received second reading \_\_\_\_\_,

Received third reading \_\_\_\_\_.

\_\_\_\_\_  
Reeve

\_\_\_\_\_  
Chief Administrative Officer

\_\_\_\_\_  
Date of Signing



From A to R-CR  
(+/-) 5.54 ac ( 2.24 Ha )



A = Agricultural District  
A(2) = Agricultural (2) District  
R-CR = Country Residential District  
R-CR1 = Country Residential (1) District  
RF = Residential Farmstead District  
C-LC = Local Commercial District  
I-BP = Business Park District  
I-HI = Heavy Industrial District  
P-PC = Parks and Conservation District

P-PR = Parks and Recreation District  
P-PCR = Parks and Comprehensive Recreational District  
S-IEC = Institutional, Educational and Cultural District  
S-AP = Airport District  
DC = Direct Control  
AEP = Aggregate Extraction / Processing District



0 25 50 Meters

Scale: 1:5,000

Mountain View County  
NAD\_1983\_CSRS\_10TM\_AEP\_Forest  
Projection: Transverse\_Mercator