

Wildfire Preparedness Guide - 2023

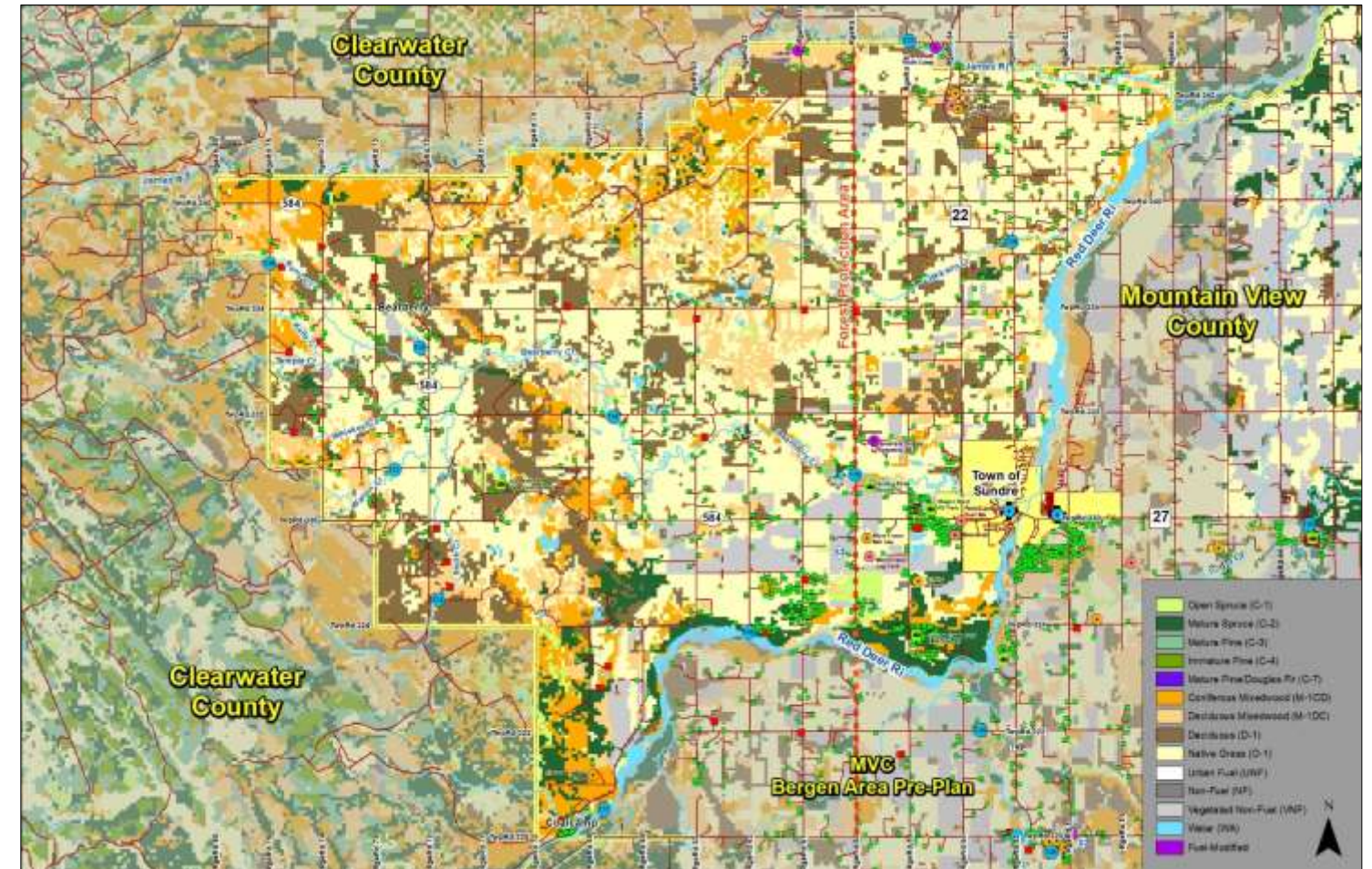
Bearberry Area

Emergency Contacts		
AB. Wildfire Management Fire Centre (Rocky Mountain House)		
Office	403-845-8272	
Duty Officer	403-845-8243	
Mountain View County Director of Emergency Management		
Office	403-335-3311	
Cell	403-586-0040	
RCMP Detachment – Sundre		
Administration	403-638-3655	
AB. Emergency Mgt. Agency		
Provincial Operations Centre	1-866-618-2362	

Mutual-Aid Communications			
Type	Channel Name	Receive (MHz)	Transmit (MHz)
Command	AFRRCS – Mountain View County CET VHF - Provincial Mutual-Aid	226MTN VIEW 156.855	226MTN VIEW 156.855
Air Advisory	Primary	129.800	129.800
Aircraft Monitoring	Bluehill – FireNet 224 / Tone 173.8	152.585	157.845
Tactical (To be assigned at incident)			
Evacuation			
Structure Protection			
Wildfire			
Other			

Functional Roles	
Functional Roles	Responsible Agency
Evacuation/Security	Mountain View County
Structure Protection	Mountain View County
Wildfire	Alberta Wildfire - within Forest Protection Area Mountain View County – outside Forest Protection Area

Critical Infrastructure, Special, and Hazardous Values at Risk			
Zone	Infrastructure	Special	Hazardous
BB1	1 – Comm Tower	N/A	Sour Gas Facilities
BB2	N/A	N/A	
BB3	N/A	N/A	
BB4	1 – Plains Midstream Pump Stn 1 – AltaLink Power Substation	1 – Lobley Cemetery 1 – Brownell Youth Camp	
BB5	N/A	1 – Sundre & District Cemetery	
BB6	1 – West Fraser Millsite 1 - Sundre Airport/SAR Cache	N/A	1 – West Fraser Log Yard 1 – PetroCan Bulk Fuel Station 1 – Enerchem O&G Tank Site Sour Gas Facilities



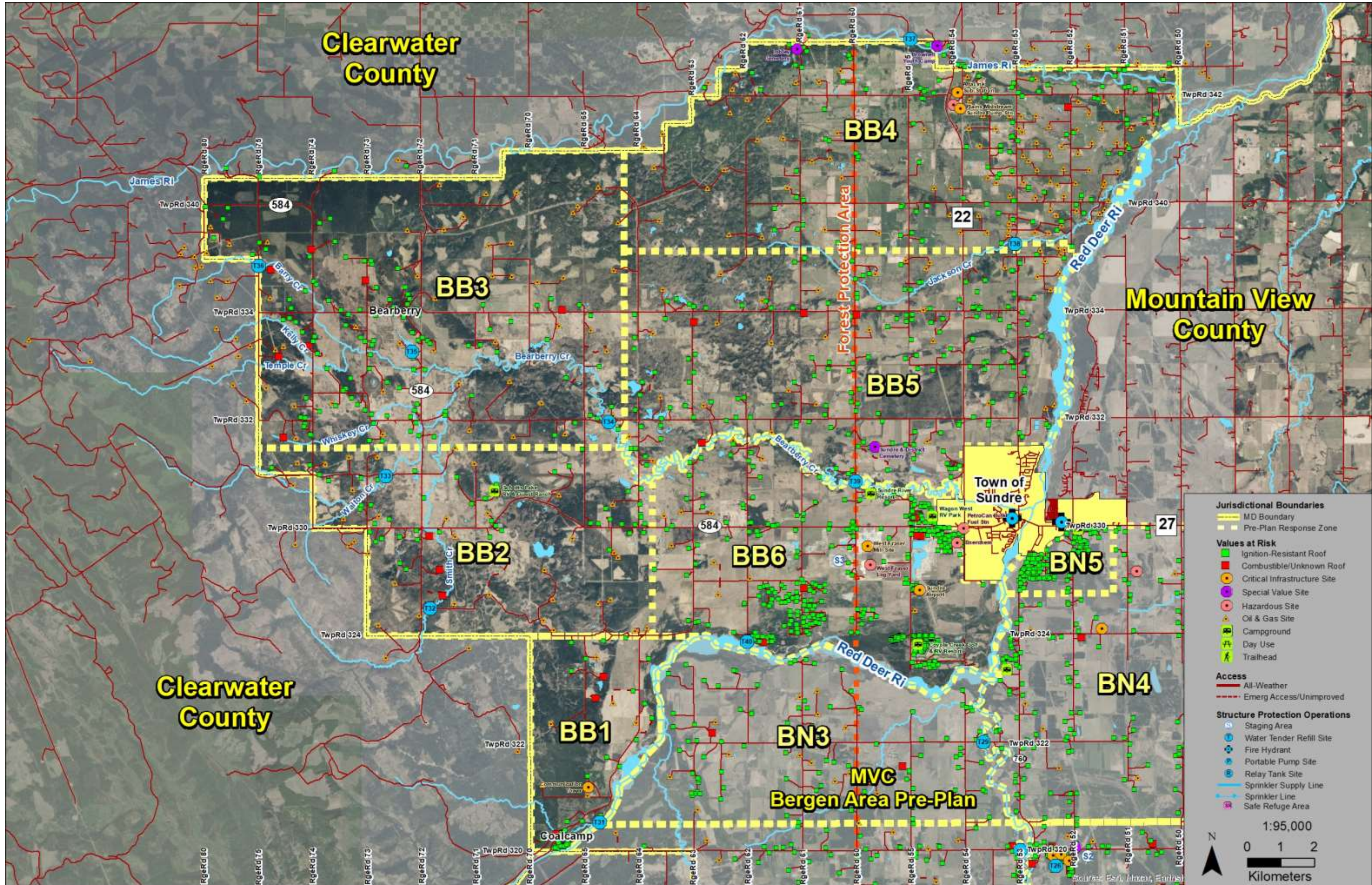
- ### Evacuation Protocols
- Incident Commander(s) will advise the AAF Duty Officer and the Mountain View County Director of Emergency Management (DEM) when the wildfire may create need for evacuation.
 - Incident Commander(s), Mountain View County DEM, and AAF Duty Officer to determine need for Evacuation ALERT, ORDER, and/or RESCIND and the trigger points for each.
 - Mountain View County DEM will issue Evacuation ALERT, ORDER, and/or RESCIND as determined.
 - An Evacuation/Security Branch will be formed in the Incident Management Team Operations Section to implement the evacuation.
 - Emergency Social Services will be provided to evacuees through the Mountain View County Emergency Coordination Centre.

Clearwater County

Mountain View County

Clearwater County

Bergen Area Pre-Plan



Jurisdictional Boundaries
MD Boundary
Pre-Plan Response Zone

Values at Risk
Ignition-Resistant Roof
Combustible/Unknown Roof
Critical Infrastructure Site
Special Value Site
Hazardous Site
Oil & Gas Site
Campground
Day Use
Trailhead

Access
All-Weather
Emerg Access/Unimproved

Structure Protection Operations
Staging Area
Water Tender Refill Site
Fire Hydrant
Portable Pump Site
Relay Tank Site
Sprinkler Supply Line
Sprinkler Line
Safe Refuge Area

1:95,000
0 1 2
Kilometers

Bearberry Area Structure Protection Pre-Plan - 2023

Overview

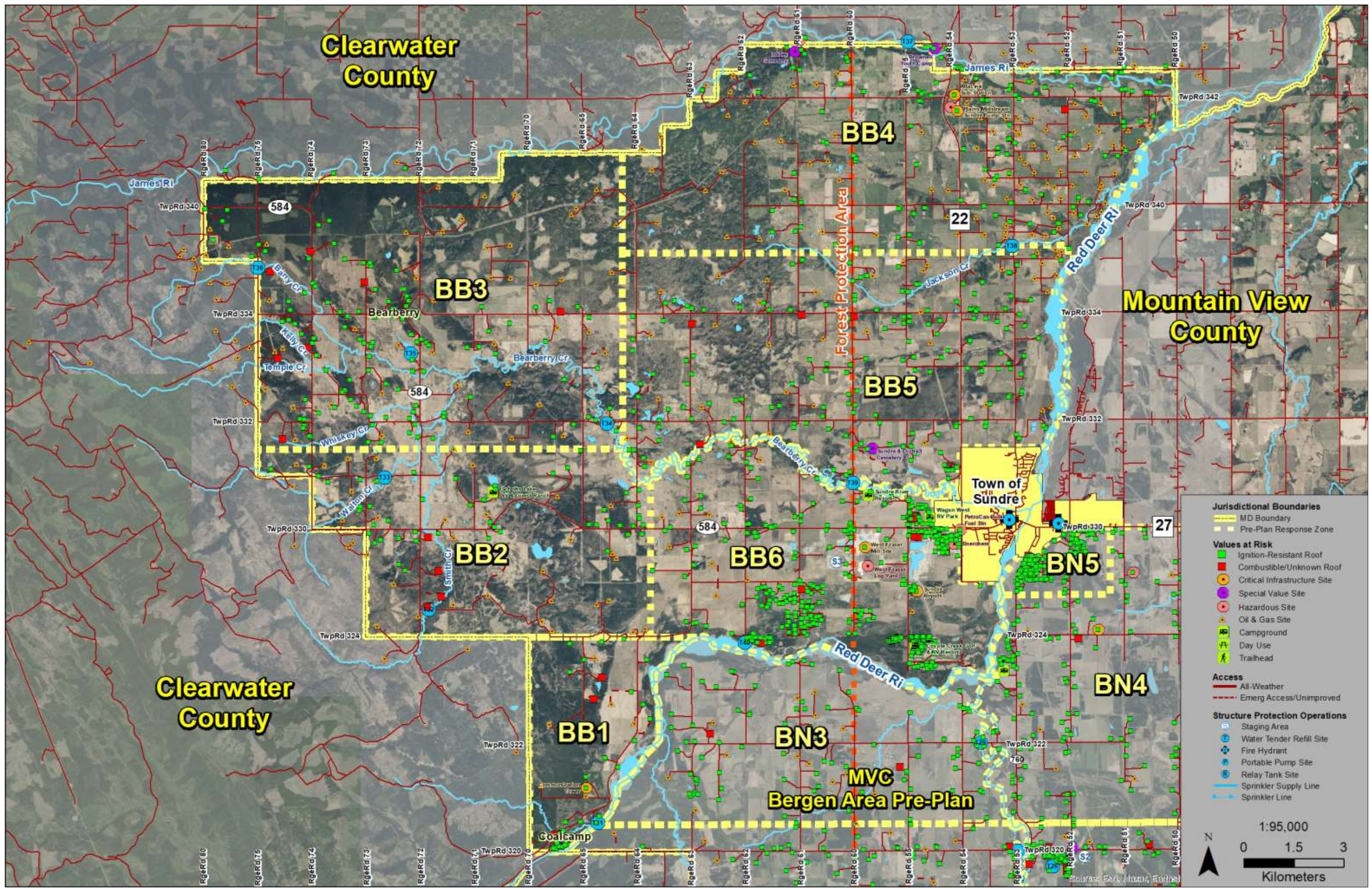
Risk Assessment	
Feature	Description
Wildfire Behaviour Potential	<ul style="list-style-type: none"> Fuel types consist of mixedwood (M-1), deciduous (D-1), & pasture/crop (O-1) with coniferous (C-2) on the south-boundary along the Red Deer River (Fuel-type map included in Wildfire Preparedness Guide) Topography is flat to rolling with minimal influence on wildfire behaviour Predominant and strongest winds from the southwest and west
Structural	<ul style="list-style-type: none"> Primarily ignition-resistant roofing materials, scattered structures with combustible wood-shake/old asphalt-shingle or unknown roofing materials Many structures with combustible siding and decking materials
Infrastructure	<ul style="list-style-type: none"> ACCESS – some properties with heavy locked-gates WATER SUPPLY – Dugouts/ponds and natural water sources throughout area – Pressurized fire-hydrant supply in Sundre POWERLINES – Overhead distribution powerlines throughout area GAS – primarily underground natural gas – scattered above-ground propane tanks and fuel tanks at risk COMMUNICATIONS – weak cell coverage in some western areas

Mutual-Aid Communications		
Command	AFRRCS Channel	VHF Channel
Command	Mountain View County CET 226MTN VIEW	Prov. Mutual-Aid Fire 156.855 MHz
Tactical (to be assigned at incident)		

Water Supply				
Map ID	Name	Location	Type	Delivery Method
Pressurized Fire Hydrants – Town of Sundre 2-65mm AMA/BAT thread & 1-125mm Storz				
T31	Coalcamp Rd	NW5-32-6-W5M	Red Deer River	Portable Pump
T32	TwpRd 324A	NW26-32-7-W5M	Smith Creek	Draft
T33	TwpRd 331	SW10-33-7-W5M	Walton Creek	Draft
T34	Hwy 584/RgeRd 65	NW8-33-6-W5M	Bearberry Creek	Draft
T35	Hwy 584/TwpRd 333	SE22-33-7-W5M	Dugout	Draft
T36	RgeRd75/TwpRd 335	NW29-33-7-W5M	Barry Creek	Draft
T37	RgeRd 55/TwpRd 343	SW20-34-5-W5M	James River	Portable Pump
T38	RgeRd 53	SW34-33-5-W5M	Jackson Creek	Portable Pump
T39	RgeRd 60	NW6-33-5-W5M	Bearberry Creek	Portable Pump
T40	RgeRd 62	NW23-32-6-W5M	Red Deer River	Portable Pump

Primary Staging Areas			
Map #	Name/Address	Location	Description
S3	McDougal Gravel Pit	SE36-32-6-W5M	MVC Gravel Pit – 3.2km west of Tim Hortons on Hwy 584 and 1.1km south on RgeRd 60
Secondary Tactical Staging Area(s) to be determined at incident			

Values at Risk (VAR's) - refer to Zone Plans for Values Protection details				
Zone/Value Name	Total	Number of Values		Critical Infrastructure / Special / Hazardous VAR's
		Roof Type		
		Ignition-Resistant	Combustible/Unknown	
Zone BB1 – Southwest	53	50	3	Critical Inf: Communication Tower Hazardous: Sour Gas Facilities Special:
Zone BB2 – Central West	54	50	4	Critical Inf: Hazardous: Sour Gas Facilities Special:
Zone BB3 – Northwest	120	113	7	Critical Inf: Hazardous: Sour Gas Facilities Special:
Zone BB4 – Northeast	115	114	1	Critical Inf: Plains Midstream Sundre Pump Stn, AltaLink Sundre-575S Substn Hazardous: Sour Gas Facilities Special: Lobley Cemetery
Zone BB5 – Central East	172	168	4	Critical Inf: Hazardous: Sour Gas Facilities, Log Yard/Sawdust Pile (5467-TwpRd 333) Special: Sundre & District Cemetery
Zone BB6 – Southeast	620	614	6	Critical Inf: West Fraser Mill, Sundre Airport & Search & Rescue Cache Hazardous: Sour Gas Facilities, West Fraser Log Yard, PetroCan Bulk Fuel Stn, Enerchem Petroleum Tanks Special: Sundre & District Cemetery



Clearwater County

Mountain View County

Clearwater County

BB4

BB3

BB5

BB2

BB6

BN5

BB1

BN3

BN4

MVC

Bergen Area Pre-Plan

Forest Protection Area

Town of Sundre

James Rl

James Rl

Berry Cr

Temple Cr

Whiskey Cr

Wynton Cr

Bearberry

Bearberry Cr

Smith Cr

Coalcamp

Jackson Cr

Bearberry Cr

Red Deer Ri

Red Deer Ri

584

584

584

22

27

RgeRd 80

RgeRd 76

RgeRd 74

RgeRd 73

RgeRd 72

RgeRd 71

RgeRd 70

RgeRd 65

RgeRd 64

RgeRd 63

RgeRd 62

RgeRd 61

RgeRd 60

RgeRd 55

RgeRd 54

RgeRd 53

RgeRd 52

RgeRd 51

RgeRd 50

RgeRd 80

RgeRd 76

RgeRd 74

RgeRd 73

RgeRd 72

RgeRd 71

RgeRd 70

RgeRd 65

RgeRd 64

RgeRd 63

RgeRd 62

RgeRd 61

RgeRd 60

RgeRd 55

RgeRd 54

RgeRd 53

RgeRd 52

RgeRd 51

RgeRd 50

TwpRd 340

TwpRd 334

TwpRd 332

TwpRd 330

TwpRd 324

TwpRd 322

TwpRd 320

TwpRd 340

TwpRd 334

TwpRd 332

TwpRd 330

TwpRd 324

TwpRd 322

TwpRd 320

760

Jurisdictional Boundaries
 MD Boundary
 Pre-Plan Response Zone

Values at Risk
 Ignition-Resistant Roof
 Combustible/Unknown Roof
 Critical Infrastructure Site
 Special Value Site
 Hazardous Site
 Oil & Gas Site
 Campground
 Day Use
 Trailhead

Access
 All-Weather
 Emerg Access/Unimproved

Structure Protection Operations
 Staging Area
 Water Tender Refill Site
 Fire Hydrant
 Portable Pump Site
 Relay Tank Site
 Sprinkler Supply Line
 Sprinkler Line

1:95,000
 0 1.5 3
 Kilometers

Bearberry Area Structure Protection Pre-Plan - 2023

Zone BB1 - Southwest

Risk Assessment	
Feature	Description
Wildfire Behaviour Potential	<ul style="list-style-type: none"> Fuel types consist of coniferous (C-2) and mixedwood (M-1CD) with a strip of pasture/crop (O-1) through the centre of the Zone Topography is flat to rolling with minimal influence on wildfire behaviour Predominant and strongest winds from the southwest and west
Structural	<ul style="list-style-type: none"> Primarily ignition-resistant roofing materials, scattered structures with combustible wood-shake/old asphalt-shingle or unknown roofing materials Many structures with combustible siding and decking materials
Infrastructure	<ul style="list-style-type: none"> ACCESS – some properties with heavy locked-gates WATER SUPPLY – Scattered dugouts/ponds and natural water sources throughout area POWERLINES – Overhead distribution powerlines throughout area GAS – primarily underground natural gas – scattered above-ground propane tanks and fuel tanks at risk COMMUNICATIONS – weak cell coverage in southern portion of Zone

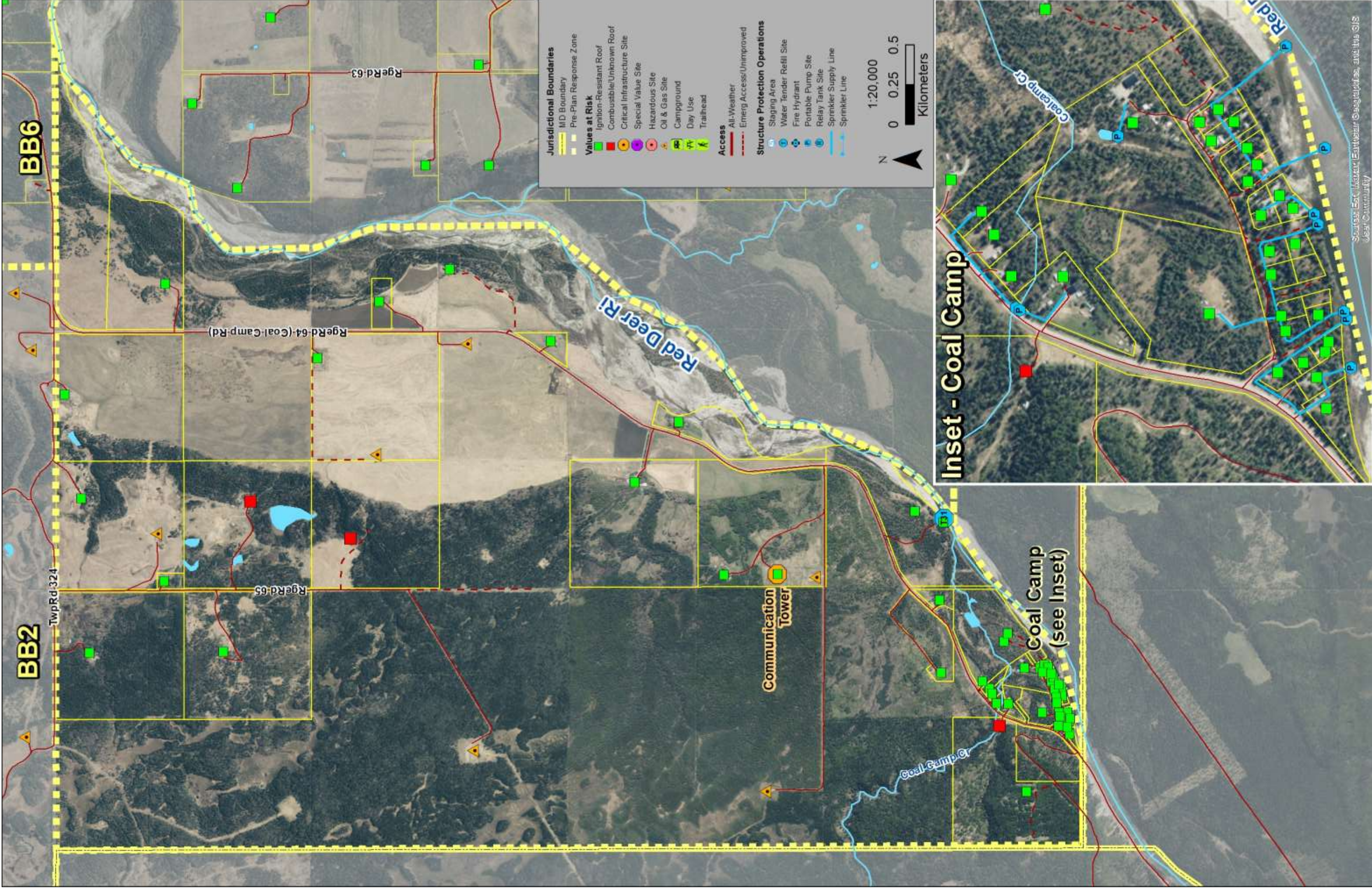
Mutual-Aid Communications		
Command	AFRRCS Channel	VHF Channel
Command	Mountain View County CET 226MTN VIEW	Prov. Mutual-Aid Fire 156.855 MHz
Tactical (to be assigned at incident)		

Water Supply				
Map ID	Name	Location	Type	Delivery Method
Pressurized Fire Hydrants – Town of Sundre 2-65mm AMA/BAT thread & 1-125mm Storz				
T31	Coal Camp Rd	NW5-32-6-W5M	Red Deer River	Portable Pump
T32	TwpRd 324A	NW26-32-7-W5M	Smith Creek	Draft
T33	TwpRd 331	SW10-33-7-W5M	Walton Creek	Draft
T34	Hwy 584/RgeRd 65	NW8-33-6-W5M	Bearberry Creek	Draft
T35	Hwy 584/TwpRd 333	SE22-33-7-W5M	Dugout	Draft
T36	RgeRd75/TwpRd 335	NW29-33-7-W5M	Barry Creek	Draft
T37	RgeRd 55/TwpRd 343	SW20-34-5-W5M	James River	Portable Pump
T38	RgeRd 53	SW34-33-5-W5M	Jackson Creek	Portable Pump
T39	RgeRd 60	NW6-33-5-W5M	Bearberry Creek	Portable Pump
T40	RgeRd 62	NW23-32-6-W5M	Red Deer River	Portable Pump

Primary Staging Areas			
Map #	Name/Address	Location	Description
S3	McDougal Gravel Pit	SE36-32-6-W5M	MVC Gravel Pit – 3.2km west of Tim Hortons on Hwy 584 and 1.1km south on RgeRd 60
Secondary Tactical Staging Area(s) to be determined at incident			

Values at Risk (VAR's) / Values Protection Operations						
Area	VALUES AT RISK			Critical Infrastructure / Special / Hazardous VAR's	Strategic Action(s)	Tactics
	Total	Number of Values				
		Roof Type	Ignition-Resistant			
Coal Camp & Area	37	36	1	Special: Infrastructure: Hazardous:	Prep & Go	<ul style="list-style-type: none"> Deploy Zone 1-2 sprinkler sets on VAR's from natural water sources or relay tanks Conduct post-impingement Tactical Patrol with apparatus for spot fires
RgeRd 64 (Coal Camp Rd)	9	9	0	Special: Infrastructure: Comm Tower Hazardous: Sour Gas Facilities	Prep & Defend	<ul style="list-style-type: none"> Scout access and fuel conditions for VAR's along Red Deer River prior to committing to Prep & Defend Bump & Run with apparatus for VAR's in grassland fuels Deploy Zone 1-2 sprinkler sets on VAR's in forest fuels along Red Deer River from natural water sources or relay tanks
TwpRd 324/RgeRd 65	7	5	2	Special: Infrastructure: Hazardous: Sour Gas Facilities	Prep & Go	<ul style="list-style-type: none"> Deploy Zone 1-2 sprinkler sets on VAR's from natural water sources or relay tanks Conduct post-impingement Tactical Patrol with apparatus for spot fires

Sprinkler Tactics and Resources						
Area	Sprinkler Tactics	Minimum Resource Requirements				Other
		Pumps	Supply Hose (m)	Sprinkler Heads (35 Lpm/ea.)	Water Volume (Lpm)	
Coal Camp	<ul style="list-style-type: none"> Deploy Zone 1-2 sprinkler sets from Red Deer River and Coal Camp Creek 	12	1725	85	3100	2 – Relay tanks (9,500 L)



Bearberry Area Structure Protection Pre-Plan - 2023

Zone BB2 – Central West

Risk Assessment	
Feature	Description
Wildfire Behaviour Potential	<ul style="list-style-type: none"> Fuel types consist primarily of mixedwood (M-1DC), deciduous (D-1), & pasture/crop (O-1) with coniferous (C-2) and mixedwood (M-1CD) along the eastern-side of the Zone Topography is flat to rolling with minimal influence on wildfire behaviour Predominant and strongest winds from the southwest and west
Structural	<ul style="list-style-type: none"> Primarily ignition-resistant roofing materials, scattered structures with combustible wood-shake/old asphalt-shingle or unknown roofing materials Many structures with combustible siding and decking materials
Infrastructure	<ul style="list-style-type: none"> ACCESS – some properties with heavy locked-gates WATER SUPPLY – Dugouts/ponds and natural water sources throughout area – Pressurized fire-hydrant supply in Sundre POWERLINES – Overhead distribution powerlines throughout area GAS – primarily underground natural gas – scattered above-ground propane tanks and fuel tanks at risk COMMUNICATIONS – weak cell coverage in some western areas

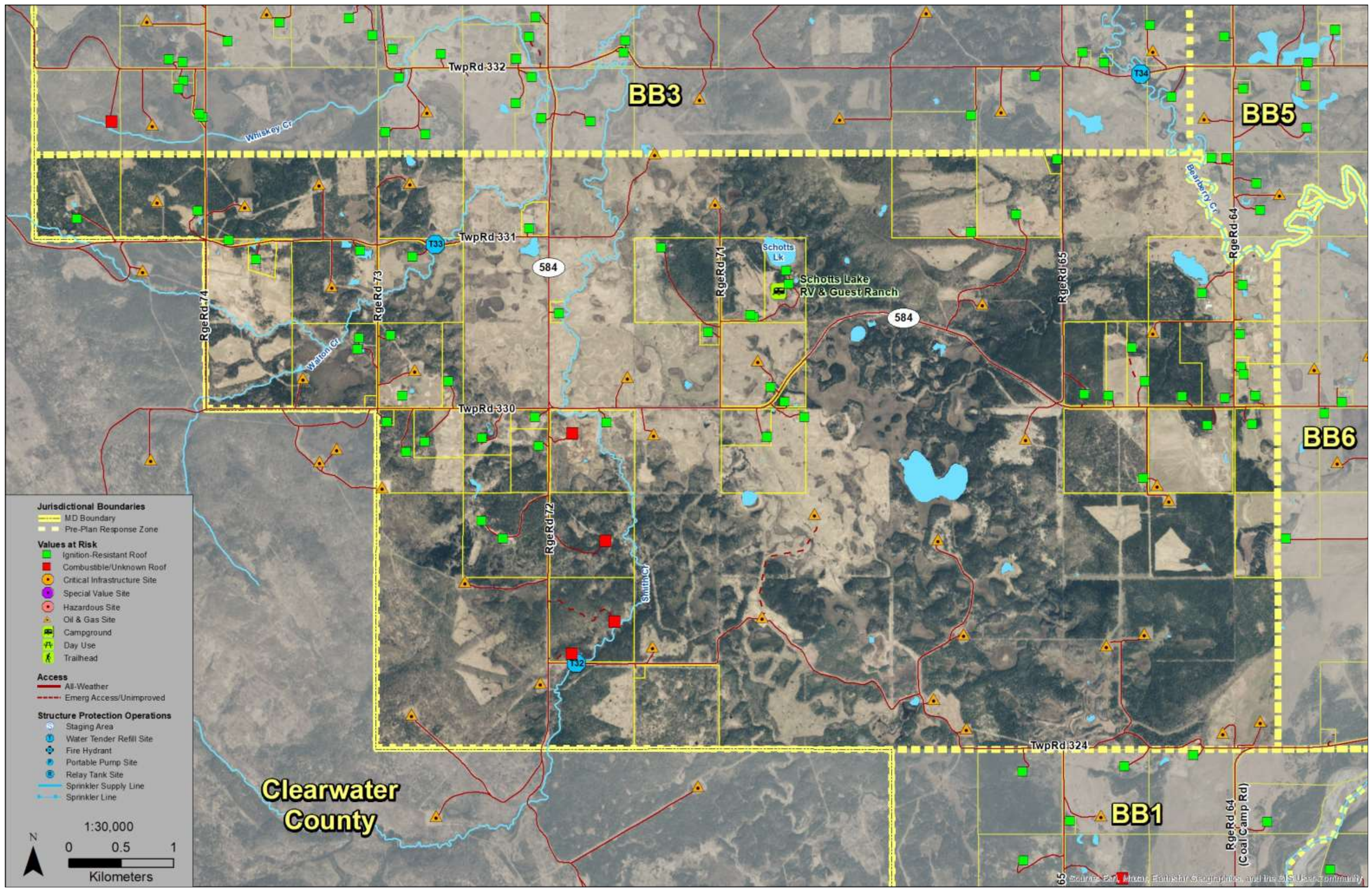
Mutual-Aid Communications		
Command	AFRRCS Channel	VHF Channel
Command	Mountain View County CET 226MTN VIEW	Prov. Mutual-Aid Fire 156.855 MHz
Tactical (to be assigned at incident)		

Water Supply				
Map ID	Name	Location	Type	Delivery Method
Pressurized Fire Hydrants – Town of Sundre 2-65mm AMA/BAT thread & 1-125mm Storz				
T31	Coal Camp Rd	NW5-32-6-W5M	Red Deer River	Portable Pump
T32	TwpRd 324A	NW26-32-7-W5M	Smith Creek	Draft
T33	TwpRd 331	SW10-33-7-W5M	Walton Creek	Draft
T34	Hwy 584/RgeRd 65	NW8-33-6-W5M	Bearberry Creek	Draft
T35	Hwy 584/TwpRd 333	SE22-33-7-W5M	Dugout	Draft
T36	RgeRd75/TwpRd 335	NW29-33-7-W5M	Barry Creek	Draft
T37	RgeRd 55/TwpRd 343	SW20-34-5-W5M	James River	Portable Pump
T38	RgeRd 53	SW34-33-5-W5M	Jackson Creek	Portable Pump
T39	RgeRd 60	NW6-33-5-W5M	Bearberry Creek	Portable Pump
T40	RgeRd 62	NW23-32-6-W5M	Red Deer River	Portable Pump

Primary Staging Areas			
Map #	Name/Address	Location	Description
S3	McDougal Gravel Pit	SE36-32-6-W5M	MVC Gravel Pit – 3.2km west of Tim Hortons on Hwy 584 and 1.1km south on RgeRd 60
Secondary Tactical Staging Area(s) to be determined at incident			

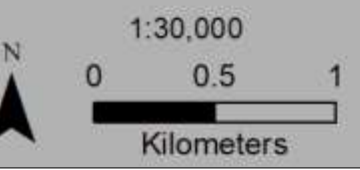
Values at Risk (VAR's) / Values Protection Operations						
Area	VALUES AT RISK			Critical Infrastructure / Special / Hazardous VAR's	VALUES PROTECTION OPERATIONS	
	Total	Number of Values			Strategic Action(s)	Tactics
		Roof Type	Ignition-Resistant			
Smith Creek West	25	21	4	Special: Infrastructure: Hazardous: Sour Gas Facilities	Prep & Go	<ul style="list-style-type: none"> Deploy Zone 1-2 sprinkler sets on VAR's from natural water sources or relay tanks Conduct post-impingement Tactical Patrol with apparatus for spot fires
Smith Creek East	29	29	0	Special: Infrastructure: Hazardous: Sour Gas Facilities	Prep & Defend	<ul style="list-style-type: none"> Scout access and fuel conditions prior to committing to Prep & Defend, particularly in SE corner of Zone Bump & Run with apparatus for spot fire ignitions Deploy Zone 1-2 sprinkler sets on combustible roof VAR's from natural water sources or relay tanks

Sprinkler Tactics and Resources						
Area	Sprinkler Tactics	Minimum Resource Requirements				Other
		Pumps	Supply Hose (m)	Sprinkler Heads (35 Lpm/ea.)	Water Volume (Lpm)	
N/A	▪					



- Jurisdictional Boundaries**
- MD Boundary
 - Pre-Plan Response Zone
- Values at Risk**
- Ignition-Resistant Roof
 - Combustible/Unknown Roof
 - Critical Infrastructure Site
 - Special Value Site
 - Hazardous Site
 - Oil & Gas Site
 - Campground
 - Day Use
 - Trailhead
- Access**
- All-Weather
 - Emerg Access/Unimproved
- Structure Protection Operations**
- Staging Area
 - Water Tender Refill Site
 - Fire Hydrant
 - Portable Pump Site
 - Relay Tank Site
 - Sprinkler Supply Line
 - Sprinkler Line

**Clearwater
County**



Bearberry Area Structure Protection Pre-Plan - 2023

Zone BB3 – Northwest

Risk Assessment	
Feature	Description
Wildfire Behaviour Potential	<ul style="list-style-type: none"> Fuel types primarily consist of deciduous (D-1), mixedwood (M-1DC), & pasture/crop (O-1) with mixedwood (M-1CD) along the north-boundary of the Zone Topography is flat to rolling with minimal influence on wildfire behaviour Predominant and strongest winds from the southwest and west
Structural	<ul style="list-style-type: none"> Primarily ignition-resistant roofing materials, scattered structures with combustible wood-shake/old asphalt-shingle or unknown roofing materials Many structures with combustible siding and decking materials
Infrastructure	<ul style="list-style-type: none"> ACCESS – some properties with heavy locked-gates WATER SUPPLY – Dugouts/ponds and natural water sources throughout area POWERLINES – Overhead distribution powerlines throughout area GAS – primarily underground natural gas – scattered above-ground propane tanks and fuel tanks at risk COMMUNICATIONS – weak cell coverage in some western areas

Mutual-Aid Communications		
Command	AFRRCS Channel	VHF Channel
Command	Mountain View County CET 226MTN VIEW	Prov. Mutual-Aid Fire 156.855 MHz
Tactical (to be assigned at incident)		

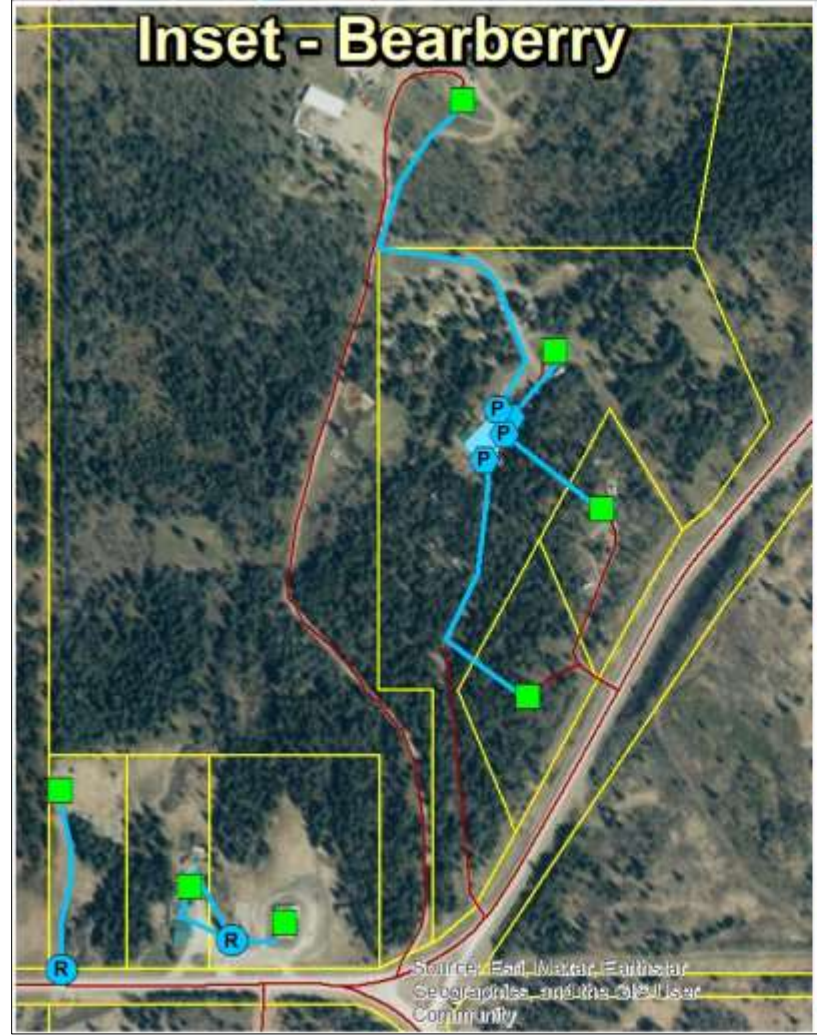
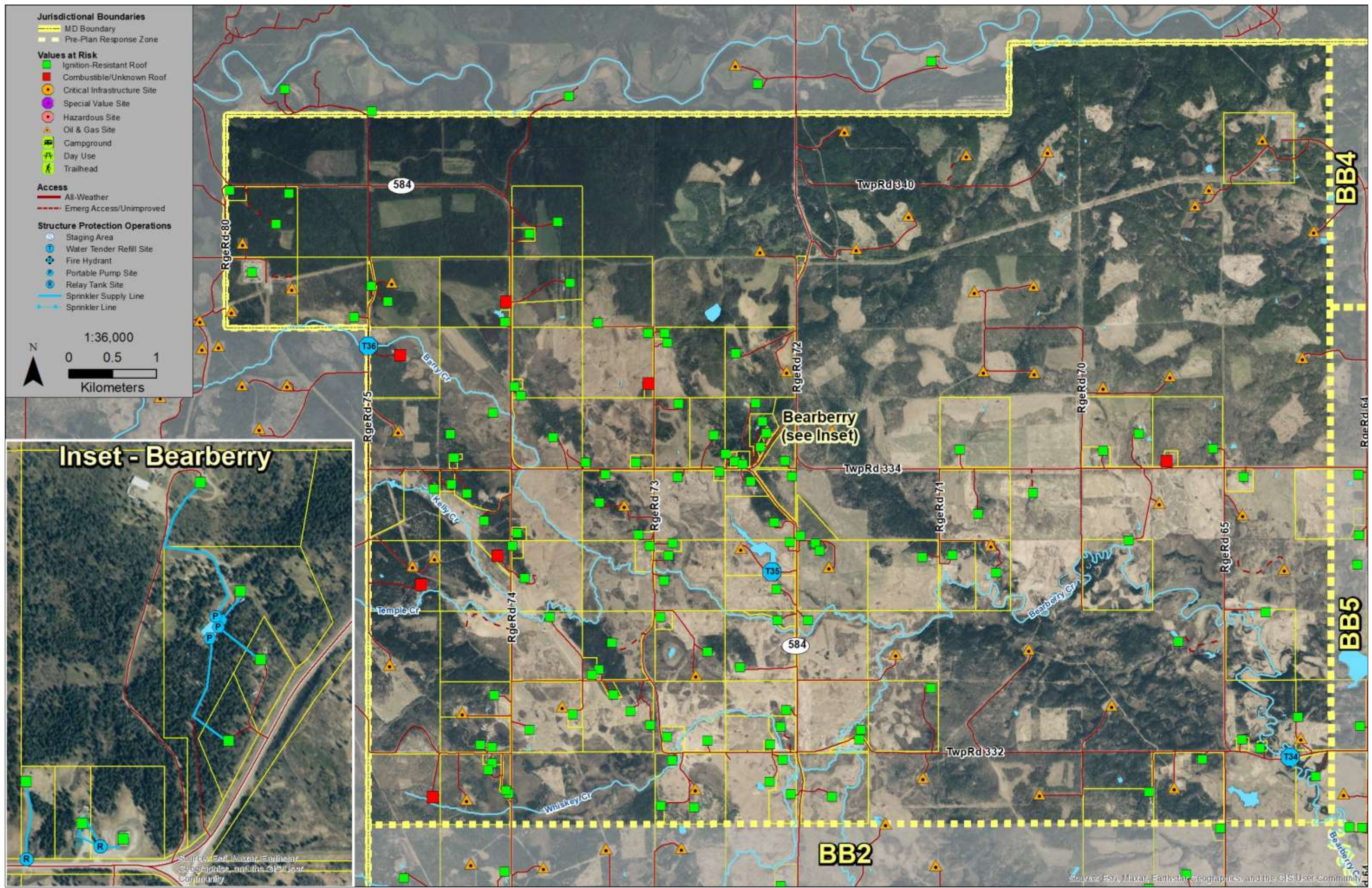
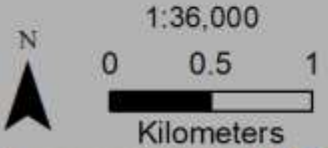
Water Supply				
Map ID	Name	Location	Type	Delivery Method
Pressurized Fire Hydrants – Town of Sundre 2-65mm AMA/BAT thread & 1-125mm Storz				
T31	Coal Camp Rd	NW5-32-6-W5M	Red Deer River	Portable Pump
T32	TwpRd 324A	NW26-32-7-W5M	Smith Creek	Draft
T33	TwpRd 331	SW10-33-7-W5M	Walton Creek	Draft
T34	Hwy 584/RgeRd 65	NW8-33-6-W5M	Bearberry Creek	Draft
T35	Hwy 584/TwpRd 333	SE22-33-7-W5M	Dugout	Draft
T36	RgeRd75/TwpRd 335	NW29-33-7-W5M	Barry Creek	Draft
T37	RgeRd 55/TwpRd 343	SW20-34-5-W5M	James River	Portable Pump
T38	RgeRd 53	SW34-33-5-W5M	Jackson Creek	Portable Pump
T39	RgeRd 60	NW6-33-5-W5M	Bearberry Creek	Portable Pump
T40	RgeRd 62	NW23-32-6-W5M	Red Deer River	Portable Pump

Primary Staging Areas			
Map #	Name/Address	Location	Description
S3	McDougal Gravel Pit	SE36-32-6-W5M	MVC Gravel Pit – 3.2km west of Tim Hortons on Hwy 584 and 1.1km south on RgeRd 60
Secondary Tactical Staging Area(s) to be determined at incident			

Values at Risk (VAR's) / Values Protection Operations						
Area	VALUES AT RISK			Critical Infrastructure / Special / Hazardous VAR's	VALUES PROTECTION OPERATIONS	
	Total	Number of Values			Strategic Action(s)	Tactics
		Ignition-Resistant	Combustible /Unknown			
Bearberry	7	7	0	Special: Infrastructure: Hazardous:	Prep & Defend	<ul style="list-style-type: none"> Deploy Zone 1-2 sprinkler sets on VAR's from natural water sources or relay tanks Bump & Run with apparatus for spot fire ignitions
RgeRd 72 West	86	80	6	Special: Infrastructure: Hazardous: Sour Gas Facilities	Prep & Defend and Prep & Go	<ul style="list-style-type: none"> Scout access and fuel conditions prior to committing to Prep & Defend, particularly in NW corner of Area Bump & Run with apparatus for spot fire ignitions on Prep & Defend VAR's Deploy Zone 1-2 sprinkler sets on Prep & Go VAR's from natural water sources or relay tanks Conduct post-impingement Tactical Patrol with apparatus for spot fires
RgeRd 72 East	27	26	1	Special: Infrastructure: Hazardous: Sour Gas Facilities	Prep & Defend	<ul style="list-style-type: none"> Scout access and fuel conditions prior to committing to Prep & Defend Bump & Run with apparatus for spot fire ignitions Deploy Zone 1-2 sprinkler sets on combustible roof VAR's from natural water sources or relay tanks

Sprinkler Tactics and Resources						
Area	Sprinkler Tactics	Minimum Resource Requirements				Other
		Pumps	Supply Hose (m)	Sprinkler Heads (35 Lpm/ea.)	Water Volume (Lpm)	
Bearberry	<ul style="list-style-type: none"> Deploy Zone 1-2 sprinkler sets on VAR's from relay tanks and rural dugout pond 	6	1125	25	875	1 – Relay tank (9,500 L) 1 – Relay tank (19,000 L)

- Jurisdictional Boundaries**
- MD Boundary
 - Pre-Plan Response Zone
- Values at Risk**
- Ignition-Resistant Roof
 - Combustible/Unknown Roof
 - Critical Infrastructure Site
 - Special Value Site
 - Hazardous Site
 - Oil & Gas Site
 - Campground
 - Day Use
 - Trailhead
- Access**
- All-Weather
 - Emerg Access/Unimproved
- Structure Protection Operations**
- Staging Area
 - Water Tender Refill Site
 - Fire Hydrant
 - Portable Pump Site
 - Relay Tank Site
 - Sprinkler Supply Line
 - Sprinkler Line



Source: Esri, Maxar, Earthstar Geographics, and the GIS User Community

Source: Esri, Maxar, Earthstar Geographics, and the GIS User Community

Bearberry Area Structure Protection Pre-Plan - 2023

Zone BB4 – Northeast

Risk Assessment	
Feature	Description
Wildfire Behaviour Potential	<ul style="list-style-type: none"> Fuel types consist primarily of pasture/crop (O-1) & deciduous (D-1) in the east with mixedwood (M-1CD) in the west Topography is flat to rolling with minimal influence on wildfire behaviour Predominant and strongest winds from the southwest and west
Structural	<ul style="list-style-type: none"> Primarily ignition-resistant roofing materials, scattered structures with combustible wood-shake/old asphalt-shingle or unknown roofing materials Many structures with combustible siding and decking materials
Infrastructure	<ul style="list-style-type: none"> ACCESS – some properties with heavy locked-gates WATER SUPPLY – Dugouts/ponds and natural water sources throughout area – Pressurized fire-hydrant supply in Sundre POWERLINES – Overhead distribution powerlines throughout area GAS – primarily underground natural gas – scattered above-ground propane tanks and fuel tanks at risk COMMUNICATIONS – mostly good cell coverage throughout Zone

Mutual-Aid Communications		
Command	AFRRCS Channel	VHF Channel
Command	Mountain View County CET 226MTN VIEW	Prov. Mutual-Aid Fire 156.855 MHz
Tactical (to be assigned at incident)		

Water Supply				
Map ID	Name	Location	Type	Delivery Method
Pressurized Fire Hydrants – Town of Sundre 2-65mm AMA/BAT thread & 1-125mm Storz				
T31	Coal Camp Rd	NW5-32-6-W5M	Red Deer River	Portable Pump
T32	TwpRd 324A	NW26-32-7-W5M	Smith Creek	Draft
T33	TwpRd 331	SW10-33-7-W5M	Walton Creek	Draft
T34	Hwy 584/RgeRd 65	NW8-33-6-W5M	Bearberry Creek	Draft
T35	Hwy 584/TwpRd 333	SE22-33-7-W5M	Dugout	Draft
T36	RgeRd75/TwpRd 335	NW29-33-7-W5M	Barry Creek	Draft
T37	RgeRd 55/TwpRd 343	SW20-34-5-W5M	James River	Portable Pump
T38	RgeRd 53	SW34-33-5-W5M	Jackson Creek	Portable Pump
T39	RgeRd 60	NW6-33-5-W5M	Bearberry Creek	Portable Pump
T40	RgeRd 62	NW23-32-6-W5M	Red Deer River	Portable Pump

Primary Staging Areas			
Map #	Name/Address	Location	Description
S3	McDougal Gravel Pit	SE36-32-6-W5M	MVC Gravel Pit – 3.2km west of Tim Hortons on Hwy 584 and 1.1km south on RgeRd 60
Secondary Tactical Staging Area(s) to be determined at incident			

Values at Risk (VAR's) / Values Protection Operations						
Area	VALUES AT RISK			Critical Infrastructure / Special / Hazardous VAR's	VALUES PROTECTION OPERATIONS	
	Total	Number of Values			Strategic Action(s)	Tactics
		Roof Type	Ignition-Resistant			
Forest Protection Area West	21	21	0	Special: Lobley Cemetery Infrastructure: Hazardous: Sour Gas Facilities	Prep & Defend	<ul style="list-style-type: none"> Scout access and fuel conditions prior to committing to Prep & Defend north of TwpRd 342 Deploy Zone 1-2 sprinkler sets on VAR's north of TwpRd 342 from natural water sources or relay tanks Bump & Run with apparatus for spot fire ignitions
Forest Protection Area East	94	93	1	Special: Brownell Youth Camp (Clearwater County) Infrastructure: <ul style="list-style-type: none"> AltaLink Sundre 575S Substn Plains Midstream Sundre Pump Stn Hazardous: Sour Gas Facilities	Prep & Defend	<ul style="list-style-type: none"> Bump & Run with apparatus for spot fire ignitions

Sprinkler Tactics and Resources						
Area	Sprinkler Tactics	Minimum Resource Requirements				Other
		Pumps	Supply Hose (m)	Sprinkler Heads (35 Lpm/ea.)	Water Volume (Lpm)	
N/A	▪					

Jurisdictional Boundaries

- MD Boundary
- Pre-Plan Response Zone

Values at Risk

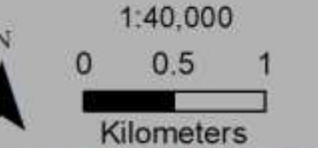
- Ignition-Resistant Roof
- Combustible/Unknown Roof
- Critical Infrastructure Site
- Special Value Site
- Hazardous Site
- Oil & Gas Site
- Campground
- Day Use
- Trailhead

Access

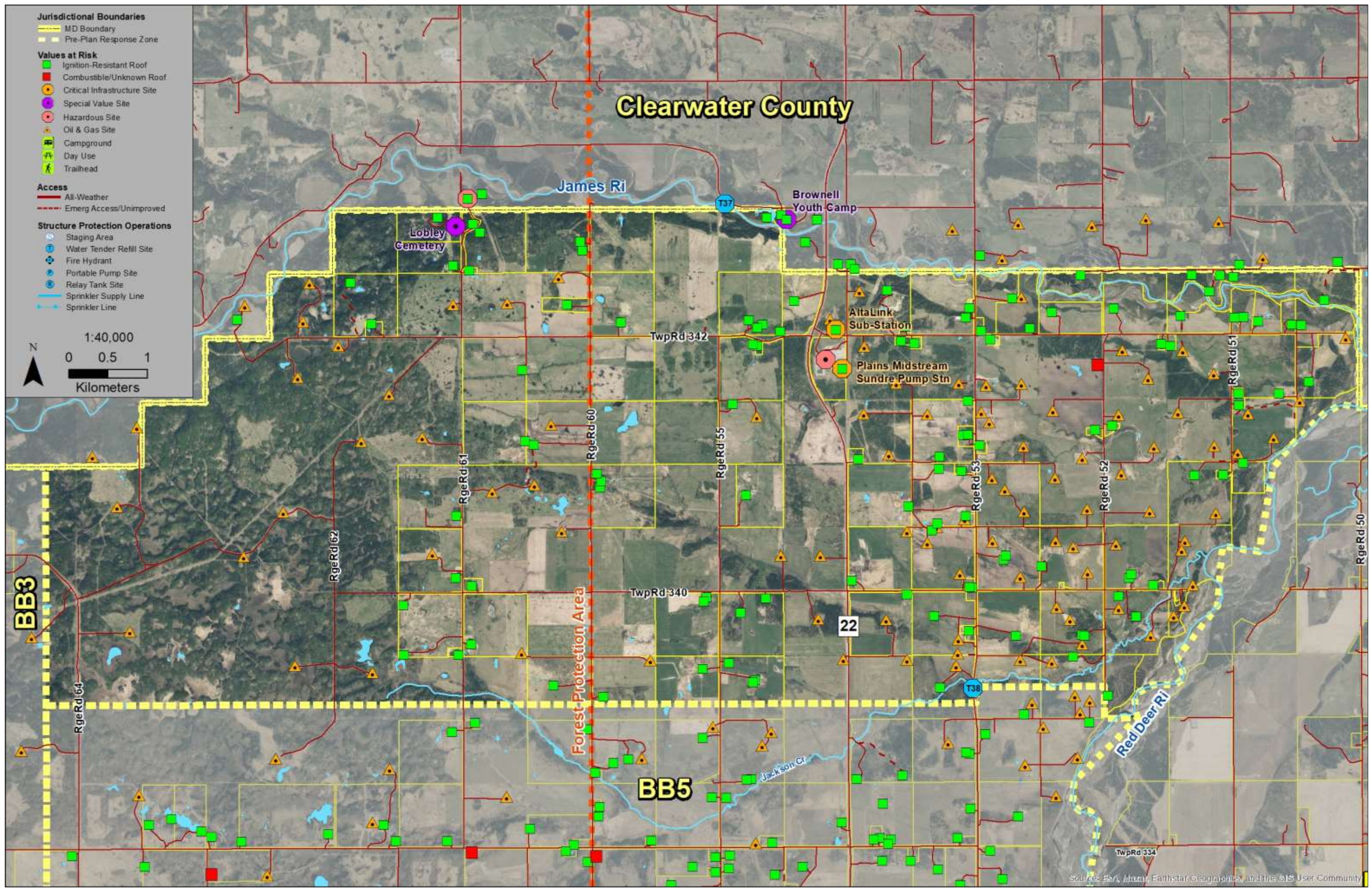
- All-Weather
- Emerg Access/Unimproved

Structure Protection Operations

- Staging Area
- Water Tender Refill Site
- Fire Hydrant
- Portable Pump Site
- Relay Tank Site
- Sprinkler Supply Line
- Sprinkler Line



Clearwater County



Bearberry Area Structure Protection Pre-Plan - 2023

Zone BB5 – Central East

Risk Assessment	
Feature	Description
Wildfire Behaviour Potential	<ul style="list-style-type: none"> Fuel types consist primarily of pasture/crop (O-1), deciduous (D-1), & mixedwood (M-1DC) Topography is flat to rolling with minimal influence on wildfire behaviour Predominant and strongest winds from the southwest and west
Structural	<ul style="list-style-type: none"> Primarily ignition-resistant roofing materials, scattered structures with combustible wood-shake/old asphalt-shingle or unknown roofing materials Many structures with combustible siding and decking materials
Infrastructure	<ul style="list-style-type: none"> ACCESS – some properties with heavy locked-gates WATER SUPPLY – Dugouts/ponds and natural water sources throughout area – Pressurized fire-hydrant supply in Sundre POWERLINES – Overhead distribution powerlines throughout area GAS – primarily underground natural gas – scattered above-ground propane tanks and fuel tanks at risk COMMUNICATIONS – mostly good cell coverage throughout Zone

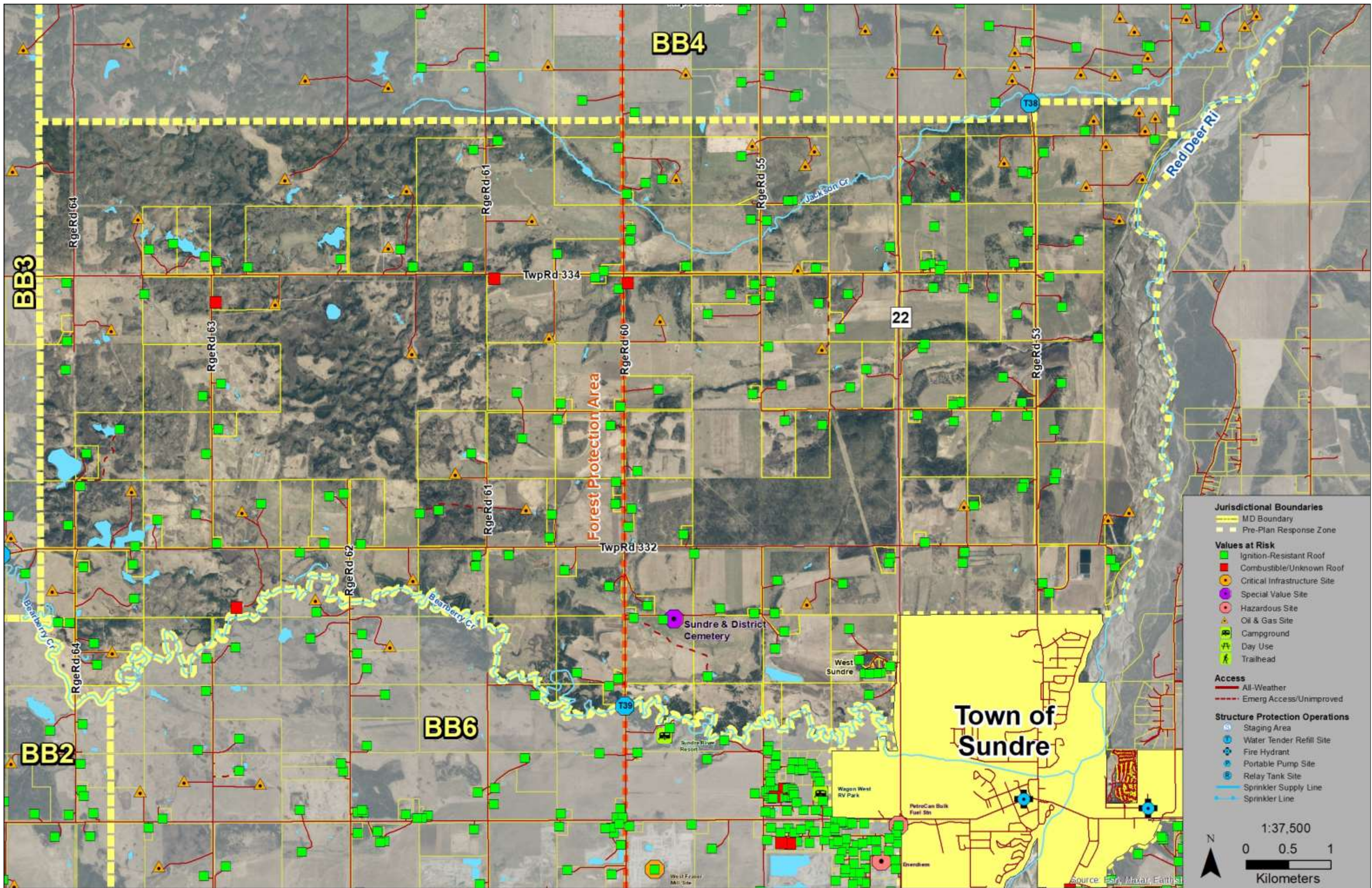
Mutual-Aid Communications		
Command	AFRRCS Channel	VHF Channel
Command	Mountain View County CET 226MTN VIEW	Prov. Mutual-Aid Fire 156.855 MHz
Tactical (to be assigned at incident)		

Water Supply				
Map ID	Name	Location	Type	Delivery Method
Pressurized Fire Hydrants – Town of Sundre 2-65mm AMA/BAT thread & 1-125mm Storz				
T31	Coal Camp Rd	NW5-32-6-W5M	Red Deer River	Portable Pump
T32	TwpRd 324A	NW26-32-7-W5M	Smith Creek	Draft
T33	TwpRd 331	SW10-33-7-W5M	Walton Creek	Draft
T34	Hwy 584/RgeRd 65	NW8-33-6-W5M	Bearberry Creek	Draft
T35	Hwy 584/TwpRd 333	SE22-33-7-W5M	Dugout	Draft
T36	RgeRd75/TwpRd 335	NW29-33-7-W5M	Barry Creek	Draft
T37	RgeRd 55/TwpRd 343	SW20-34-5-W5M	James River	Portable Pump
T38	RgeRd 53	SW34-33-5-W5M	Jackson Creek	Portable Pump
T39	RgeRd 60	NW6-33-5-W5M	Bearberry Creek	Portable Pump
T40	RgeRd 62	NW23-32-6-W5M	Red Deer River	Portable Pump

Primary Staging Areas			
Map #	Name/Address	Location	Description
S3	McDougal Gravel Pit	SE36-32-6-W5M	MVC Gravel Pit – 3.2km west of Tim Hortons on Hwy 584 and 1.1km south on RgeRd 60
Secondary Tactical Staging Area(s) to be determined at incident			

Values at Risk (VAR's) / Values Protection Operations						
Area	VALUES AT RISK			Critical Infrastructure / Special / Hazardous VAR's	VALUES PROTECTION OPERATIONS	
	Total	Number of Values			Strategic Action(s)	Tactics
		Roof Type	Ignition-Resistant			
Forest Protection Area West	69	66	3	Special: Infrastructure: Hazardous: Sour Gas Facilities	Prep & Defend	<ul style="list-style-type: none"> Scout access and fuel conditions prior to committing to Prep & Defend Deploy Zone 1-2 sprinkler sets on combustible roof VAR's from natural water sources or relay tanks Bump & Run with apparatus for spot fire ignitions
Forest Protection Area East	103	102	1	Special: Sundre & District Cemetery Infrastructure: Hazardous: Sour Gas Facilities	Prep & Defend	<ul style="list-style-type: none"> Scout access and fuel conditions prior to committing to Prep & Defend Bump & Run with apparatus for spot fire ignitions

Sprinkler Tactics and Resources						
Area	Sprinkler Tactics	Minimum Resource Requirements				Other
		Pumps	Supply Hose (m)	Sprinkler Heads (35 Lpm/ea.)	Water Volume (Lpm)	
N/A	▪					



Bearberry Area Structure Protection Pre-Plan - 2023

Zone BB6 – Southeast

Risk Assessment	
Feature	Description
Wildfire Behaviour Potential	<ul style="list-style-type: none"> Fuel types consist primarily of pasture/crop (O-1 & VNF) with coniferous (C-2) on the south-boundary along the Red Deer River Topography is flat to rolling with minimal influence on wildfire behaviour Predominant and strongest winds from the southwest and west
Structural	<ul style="list-style-type: none"> Primarily ignition-resistant roofing materials, scattered structures with combustible wood-shake/old asphalt-shingle or unknown roofing materials Many structures with combustible siding and decking materials
Infrastructure	<ul style="list-style-type: none"> ACCESS – some properties with heavy locked-gates WATER SUPPLY – Dugouts/ponds and natural water sources throughout area – Pressurized fire-hydrant supply in Sundre POWERLINES – Overhead distribution powerlines throughout area GAS – primarily underground natural gas – scattered above-ground propane tanks and fuel tanks at risk COMMUNICATIONS – mostly good cell coverage throughout Zone

Mutual-Aid Communications		
Command	AFRRCS Channel	VHF Channel
Command	Mountain View County CET 226MTN VIEW	Prov. Mutual-Aid Fire 156.855 MHz
Tactical (to be assigned at incident)		

Water Supply				
Map ID	Name	Location	Type	Delivery Method
Pressurized Fire Hydrants – Town of Sundre 2-65mm AMA/BAT thread & 1-125mm Storz				
T31	Coal Camp Rd	NW5-32-6-W5M	Red Deer River	Portable Pump
T32	TwpRd 324A	NW26-32-7-W5M	Smith Creek	Draft
T33	TwpRd 331	SW10-33-7-W5M	Walton Creek	Draft
T34	Hwy 584/RgeRd 65	NW8-33-6-W5M	Bearberry Creek	Draft
T35	Hwy 584/TwpRd 333	SE22-33-7-W5M	Dugout	Draft
T36	RgeRd75/TwpRd 335	NW29-33-7-W5M	Barry Creek	Draft
T37	RgeRd 55/TwpRd 343	SW20-34-5-W5M	James River	Portable Pump
T38	RgeRd 53	SW34-33-5-W5M	Jackson Creek	Portable Pump
T39	RgeRd 60	NW6-33-5-W5M	Bearberry Creek	Portable Pump
T40	RgeRd 62	NW23-32-6-W5M	Red Deer River	Portable Pump

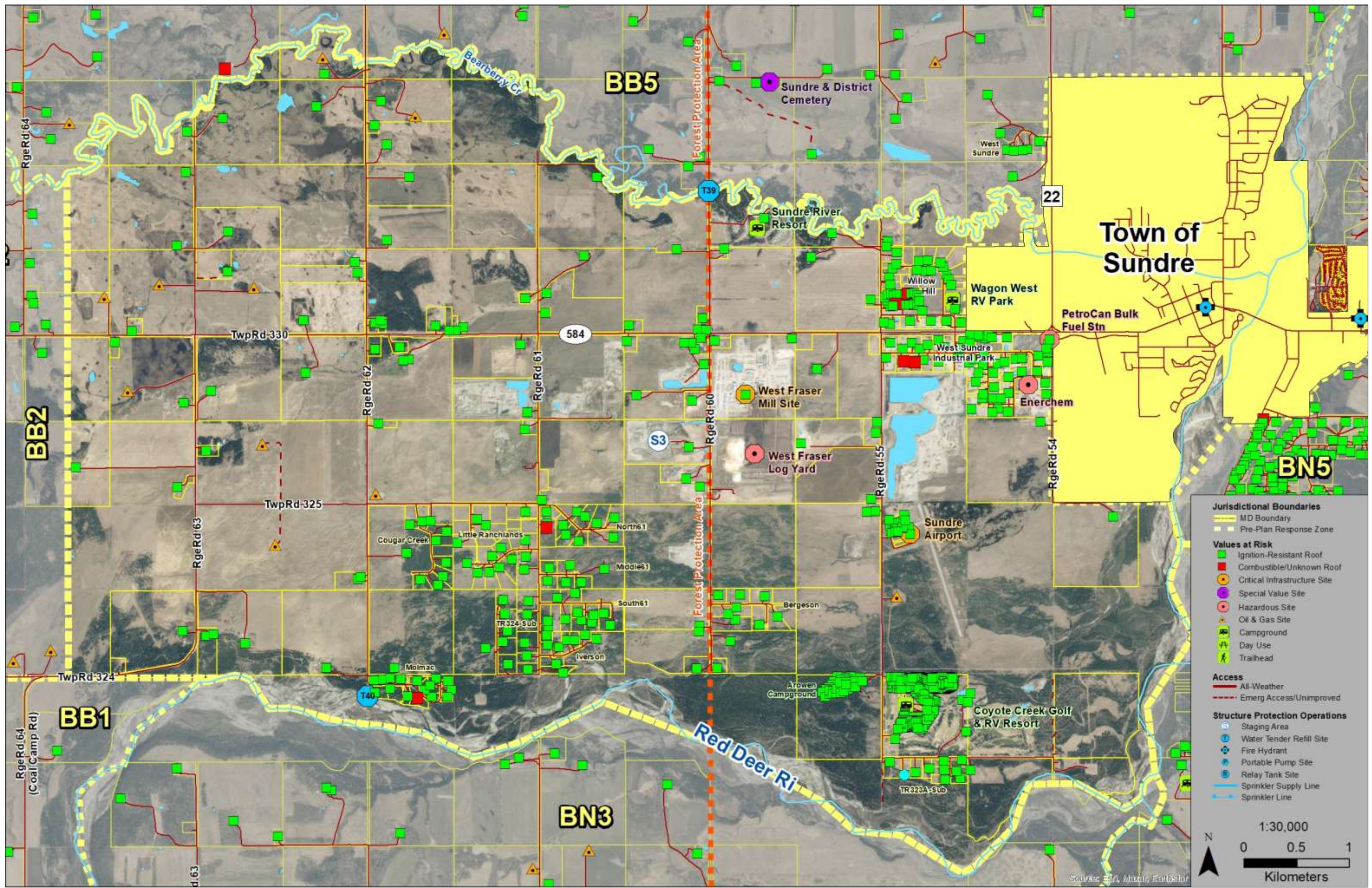
Primary Staging Areas			
Map #	Name/Address	Location	Description
S3	McDougal Gravel Pit	SE36-32-6-W5M	MVC Gravel Pit – 3.2km west of Tim Hortons on Hwy 584 and 1.1km south on RgeRd 60
Secondary Tactical Staging Area(s) to be determined at incident			

Values at Risk (VAR's) / Values Protection Operations

Area	VALUES AT RISK			Critical Infrastructure / Special / Hazardous VAR's	Strategic Action(s)	Tactics
	Total	Number of Values				
		Roof Type	Ignition-Resistant			
Cougar Creek Subdivision	10	10	0	Critical Inf: West Fraser Mill, Sundre Airport & Search & Rescue Cache Hazardous: Sour Gas Facilities, West Fraser Log Yard, PetroCan Bulk Fuel Stn, Enerchem Petroleum Tanks Special: Sundre & District Cemetery	Prep & Go	<ul style="list-style-type: none"> Deploy Zone 1-2 sprinkler sets on VAR's from natural water sources or relay tanks Conduct post-impingement Tactical Patrol with apparatus for spot fires
Little Ranchlands Subdivision	14	14	0		Prep & Defend	<ul style="list-style-type: none"> Bump & Run with apparatus for spot fire ignitions
Molmac Subdivision	17	16	1		Prep & Go	<ul style="list-style-type: none"> Deploy Zone 1-2 sprinkler sets on VAR's from natural water sources or relay tanks Conduct post-impingement Tactical Patrol with apparatus for spot fires
North61 Subdivision	12	11	1		Prep & Defend	<ul style="list-style-type: none"> Bump & Run with apparatus for spot fire ignitions
Middle61 Subdivision	6	6	0		Prep & Go	<ul style="list-style-type: none"> Scout access and fire behaviour conditions if considering Prep & Defend for South61 and Iverson Deploy Zone 1-2 sprinkler sets on VAR's from natural water sources or relay tanks Conduct post-impingement Tactical Patrol with apparatus for spot fires
South61 Subdivision	11	11	0		Prep & Defend	<ul style="list-style-type: none"> Bump & Run with apparatus for spot fire ignitions
Iverson Subdivision	9	9	0		Prep & Go	<ul style="list-style-type: none"> Deploy Zone 1-2 sprinkler sets on VAR's from natural water sources or relay tanks Conduct post-impingement Tactical Patrol with apparatus for spot fires
TR324-Subdivision	11	11	0		Prep & Defend	<ul style="list-style-type: none"> Bump & Run with apparatus for spot fire ignitions
Bergeson Subdivision	11	11	0		Prep & Go	<ul style="list-style-type: none"> Deploy Zone 1-2 sprinkler sets on VAR's from natural water sources or relay tanks Conduct post-impingement Tactical Patrol with apparatus for spot fires
Arowen Campground	31	31	0		Prep & Defend	<ul style="list-style-type: none"> Scout access and fire behaviour conditions prior to considering Prep & Defend Deploy Zone 1-2 sprinkler sets on VAR's from natural water sources or relay tanks Bump & Run with apparatus for spot fire ignitions
TR323A Subdivision	11	11	0		Prep & Defend	<ul style="list-style-type: none"> Bump & Run with apparatus for spot fire ignitions
Coyote Creek Golf & RV Resort	266	266	0		Prep & Defend	<ul style="list-style-type: none"> Bump & Run with apparatus for spot fire ignitions
West Sundre Industrial Park/Willow Hill	113	109	4		Prep & Defend	<ul style="list-style-type: none"> Bump & Run with apparatus for spot fire ignitions

Sprinkler Tactics and Resources

Area	Sprinkler Tactics	Minimum Resource Requirements				Other
		Pumps	Supply Hose (m)	Sprinkler Heads (35 Lpm/ea.)	Water Volume (Lpm)	
Cougar Creek Subdivision	<ul style="list-style-type: none"> Deploy Zone 1-2 sprinkler sets on VAR's from relay tanks 	5	1500	30	1050	5-Relay tanks (9500 L)
Molmac Subdivision	<ul style="list-style-type: none"> Deploy Zone 1-2 sprinkler sets on VAR's from Red Deer River 	3	1350	55	1925	
South61/Iverson/TR324 Subdivisions	<ul style="list-style-type: none"> Deploy Zone 1-2 sprinkler sets on VAR's from relay tanks 	16	3150	65	2275	16-Relay tanks (9500 L) or 5-Upright Relay tanks (63,000 L)
Arowen Campground	<ul style="list-style-type: none"> Deploy Zone 2-3 perimeter sprinkler line from relay tanks 	2	1275	45	1575	2-Upright Relay tanks (63,000 L)
TR323A Subdivision	<ul style="list-style-type: none"> Deploy Zone 1-2 sprinkler sets on VAR's from Dugout (#5471) and/or Red Deer River 	4	1275	35	1225	



BB5

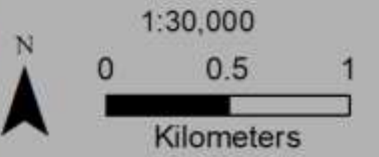
Town of Sundre

BN5

BB1

BN3

- Jurisdictional Boundaries**
- MD Boundary
 - Pre-Plan Response Zone
- Values at Risk**
- Ignition-Resistant Roof
 - Combustible/Unknown Roof
 - Critical Infrastructure Site
 - Special Value Site
 - Hazardous Site
 - Oil & Gas Site
 - Campground
 - Day Use
 - Trailhead
- Access**
- All-Weather
 - Emerg Access/Unimproved
- Structure Protection Operations**
- Staging Area
 - Water Tender Refill Site
 - Fire Hydrant
 - Portable Pump Site
 - Relay Tank Site
 - Sprinkler Supply Line
 - Sprinkler Line



Source: ESA, Maxar, EarthStar