



Mountain View COUNTY

Location, Land Use, Ownership & Circulation

Legend

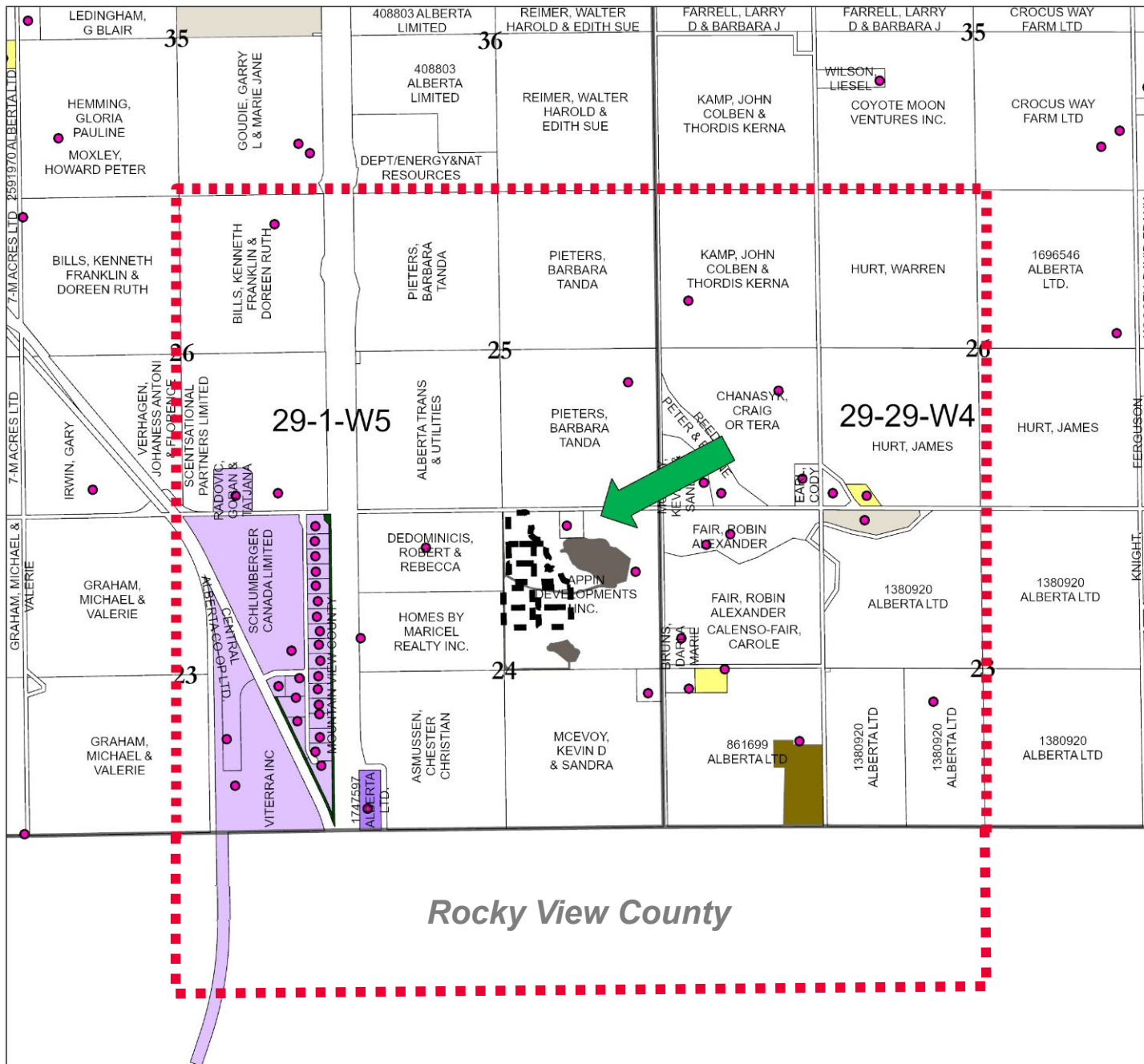
- Rural Address
- Proposed Redesignation
- Subdivision Boundary
- Land Use Zoning**
- Agricultural District (A)
- Agricultural (2) District (A(2))
- Country Residential District (R-CR)
- Country Residential (1) District (R-CR1)
- Residential Farmstead District (R-F)
- Local Commercial District (C-LC)
- Business Park District (I-BP)
- Heavy Industrial District (I-HI)
- Aggregate Extraction/Processing District (AEP)
- Parks and Conservation District (P-PC)
- Parks and Recreation District (P-PR)
- Parks and Comprehensive Recreational District (P-PCR)
- Institutional, Educational and Cultural District (S-IEC)
- Airport District (S-AP)
- Direct Control
- Subject Land
- Landowners Circulated



0 250 500 1,000 1,500 Meters

Scale: 1:30,000

Mountain View County
NAD_1983_CSRS_10TM_AEP_Forest
Projection: Transverse_Mercator



Rocky View County

Legal Location: NE 24-29-1-5
File No: PLRDSD20220043

Map Created on: 11/12/2025