

BYLAW NO. LU 36/22

Being a Bylaw of Mountain View County in the Province of Alberta to amend Land Use Bylaw No. 21/21 affecting NW 31-30-4-5 pursuant to the Municipal Government Act.

---

The Council of Mountain View County, duly assembled, enacts that Bylaw No. 21/21 be amended as follows:

To redesignate from Agricultural District (A) to Agricultural (2) District (A(2)) an approximate forty three point six zero (43.60) acres (17.64 hectares) in the Northwest (NW) Quarter of Section thirty-one (31), Township thirty (30), Range four (4), West of the fifth (5<sup>th</sup>) Meridian, as outlined on Schedule "A" attached hereto.

Received first reading September 28, 2022,

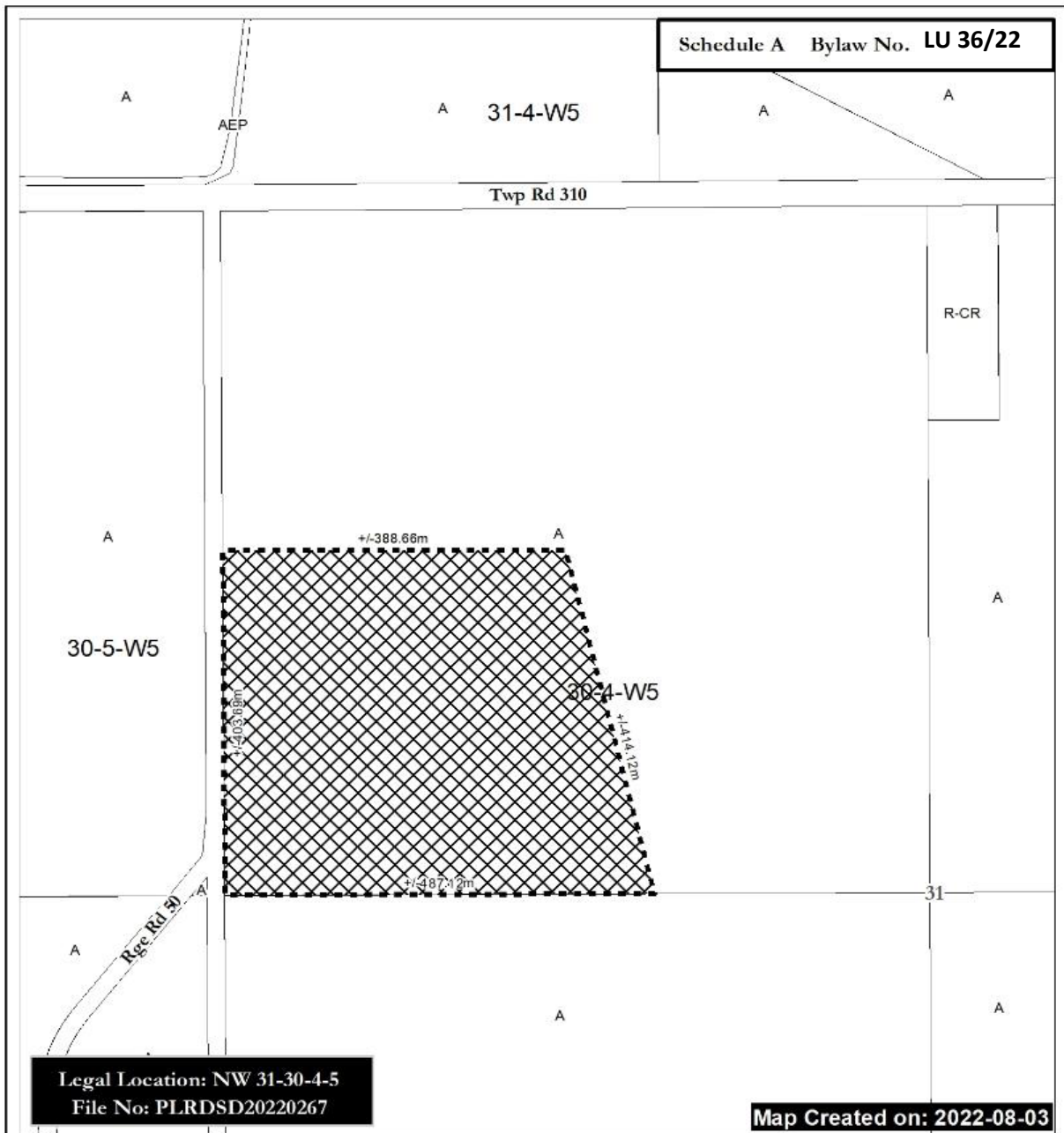
Received second reading \_\_\_\_\_,


Received third reading \_\_\_\_\_,

\_\_\_\_\_  
Reeve

\_\_\_\_\_  
Chief Administrative Officer

\_\_\_\_\_  
Date of Signing



 From A to A(2)  
(+/-) 43.60 ac ( 17.64 Ha )



A = Agricultural District  
A(2) = Agricultural (2) District  
R-CR = Country Residential District  
R-CR1 = Country Residential (1) District  
RF = Residential Farmstead District  
C-LC = Local Commercial District  
I-BP = Business Park District  
I-HI = Heavy Industrial District

P-PC = Parks and Conservation District  
P-PR = Parks and Recreation District  
P-PCR = Parks and Comprehensive Recreational District  
S-IEC = Institutional, Educational and Cultural District  
S-AP = Airport District  
DC = Direct Control  
AEP = Aggregate Extraction / Processing District

