



McDougal Community Amenity

Mountain View County wants to hear from you!

Since 2017, Mountain View County has been looking into potential ideas for the revitalization of McDougal Gravel Pit, an 80-acre parcel of land located in the McDougal Flats area outside Sundre, Alberta. This location, previously used as a gravel pit is no longer in operation and is set for reclamation to accommodate a new use.

In late 2020, MVC Council approved to enter into a Memorandum of Understanding with SunAlta Power to facilitate the initial steps into the development of Solar Photovoltaic system to be placed on a portion of the existing lands (approximately 40 acres), with the further direction to use the remainder of the lands (approximately 40 acres) for a community amenity space as identified by Mountain View County residents.

As such, the County is interested in hearing from you on potential projects that would become an asset to the local community and the municipality as a whole!

This initial phase of engagement is intended to brainstorm ideas with residents on what they would like to see as an amenity on the lands. Future engagements will help to narrow the scope of the project in an effort to provide a recommendation to Council for consideration and final approval by the end of 2022. Site design, based on the feedback received from the community is tentatively scheduled for 2023, with development (depending on the scope and scale of the recommended project) beginning as early as 2024.

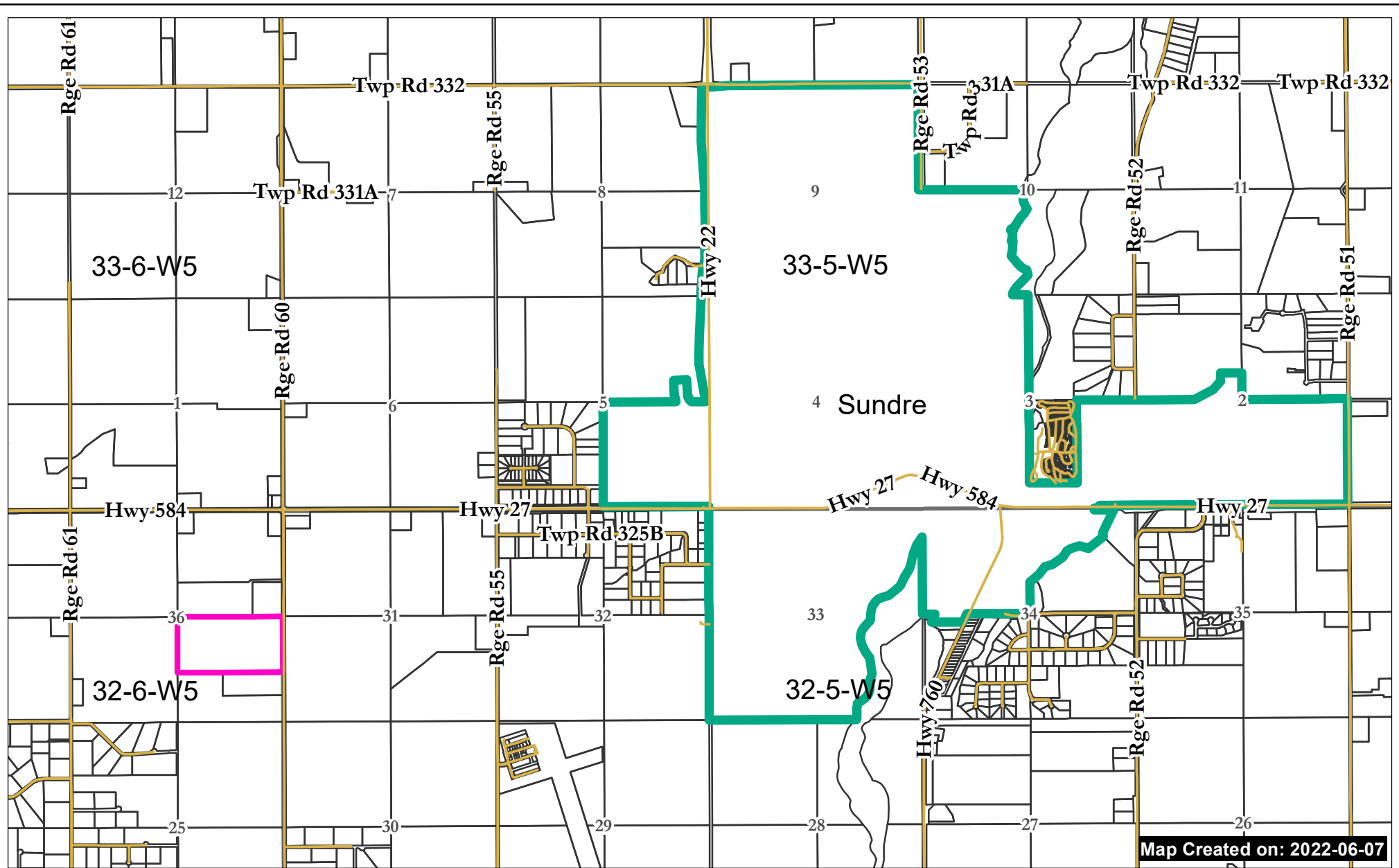
The site can be seen below:

- *Map 1 location of Parcel*
- *Map 2 Aerial of Parcel*

We appreciate your feedback and participation and encourage you to contact us with any questions or comments,

Christofer Atchison
Director of Legislative, Community and Agricultural Services
catchison@mvcountry.com
403-335-3311 ext. 114





Mountain View
C O U N T Y

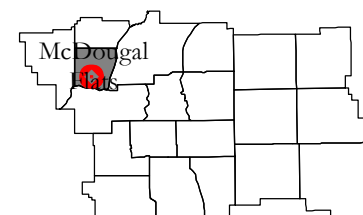
**SE 36-32-6 W5
Map1**

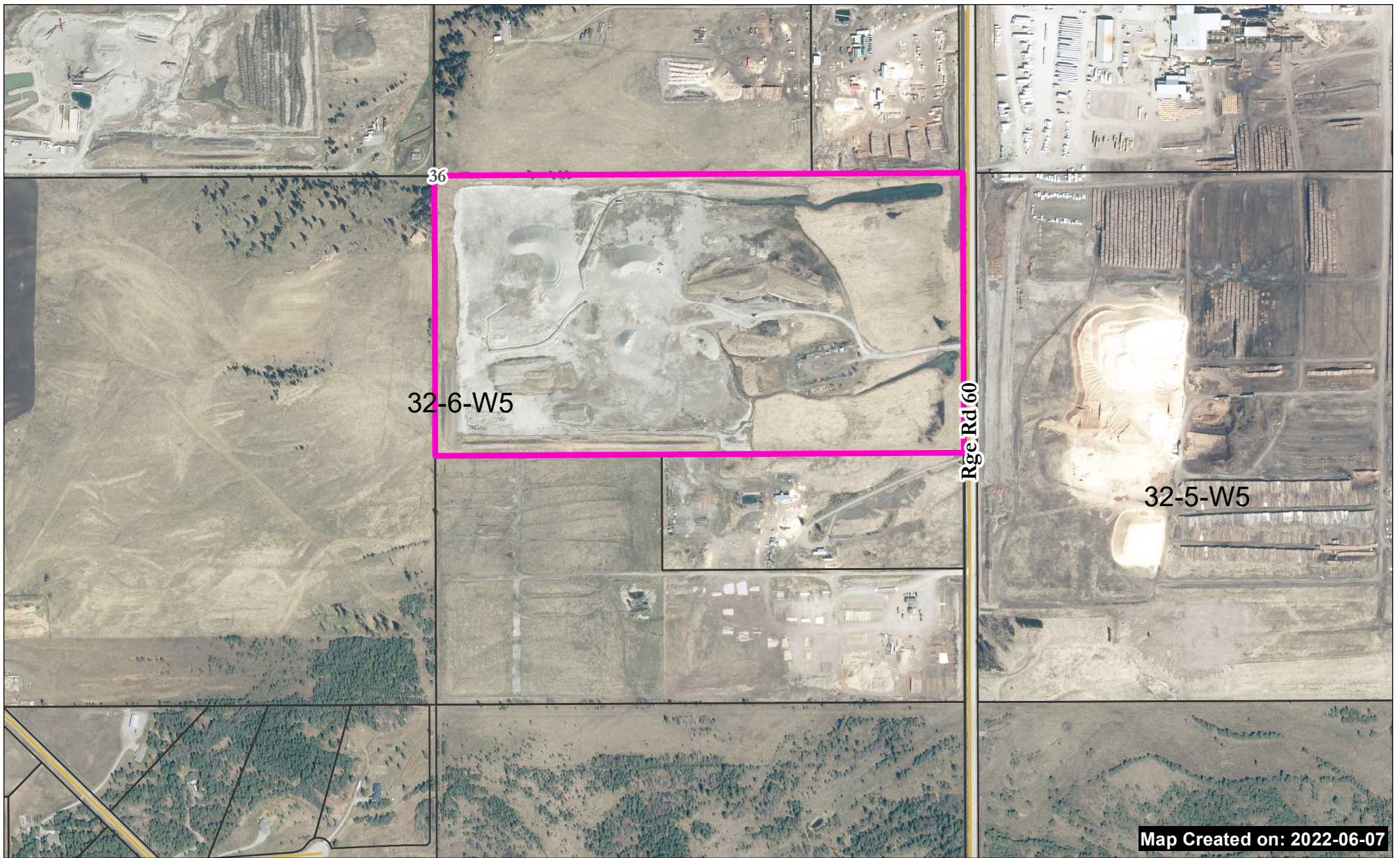
Legend

- Property of Interest
- Town of Sundre



Scale: 1:40,000
Mountain View County





SE 36-32-6 W5
Map2

Legend

- Property of Interest
- Town of Sundre



Scale: 1:8,000
Mountain View County

