

BYLAW NO. LU 20/26

Being a Bylaw of Mountain View County in the Province of Alberta to amend Land Use Bylaw No. 10/24 affecting SE 15-33-6-5 Plan 1711620 Block 1 Lot 2 pursuant to the Municipal Government Act.

---

The Council of Mountain View County, duly assembled, enacts that Bylaw No. 10/24 be amended as follows:

To redesignate from Agricultural (2) District (A(2)) to Country Residential (1) District (R-CR1) an approximate two point six three (2.63) acres (1.06 hectares) within Plan 1711620 Block 1 Lot 2 in the Southeast (SE) Quarter of Section fifteen (15), Township thirty-three (33), Range six (6), West of the fifth (5<sup>th</sup>) Meridian, as outlined on Schedule "A" attached hereto.

Received first reading July 08, 2026,

Received second reading \_\_\_\_\_,

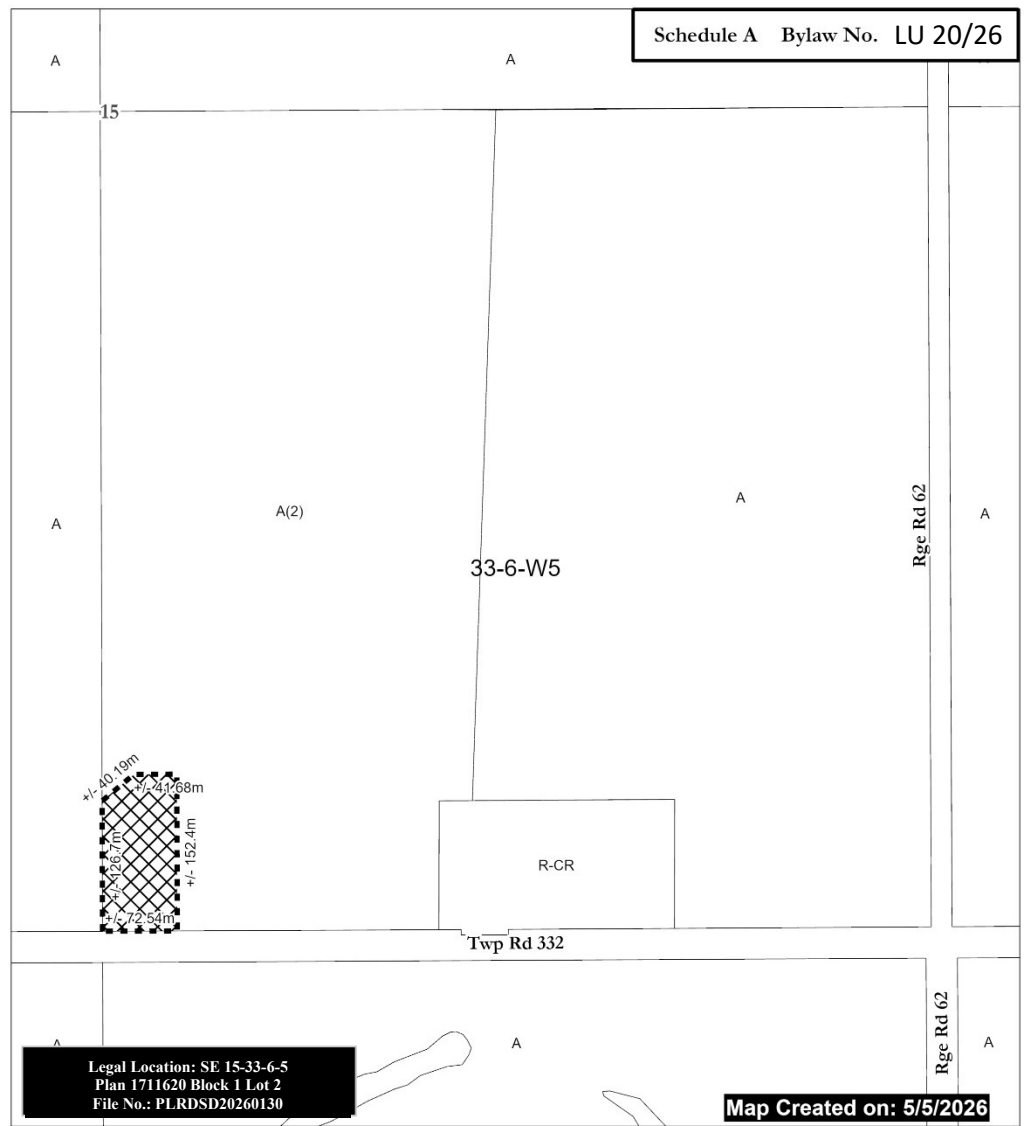
Received third reading \_\_\_\_\_.

\_\_\_\_\_  
Reeve

\_\_\_\_\_  
Chief Administrative Officer


\_\_\_\_\_  
Date of Signing

Schedule A Bylaw No. LU 20/26



Legal Location: SE 15-33-6-5  
Plan 1711620 Block 1 Lot 2  
File No.: PLRSD20260130

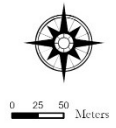
Map Created on: 5/5/2026

 From A2 to R-CR1  
(+/-) 2.63 ac (1.06 Ha)



- A = Agricultural District
- A(2) = Agricultural (2) District
- R-CR = Country Residential District
- R-CR1 = Country Residential (1) District
- RF = Residential Farmstead District
- C-LC = Local Commercial District
- I-BP = Business Park District
- I-HI = Heavy Industrial District
- P-PC = Parks and Conservation District

- P-PR = Parks and Recreation District
- P-PCR = Parks and Comprehensive Recreational District
- S-IEC = Institutional, Educational and Cultural District
- S-AP = Airport District
- DC = Direct Control
- AEP = Aggregate Extraction / Processing District



Scale: 1:5,000

Mountain View County  
NAD\_1983\_CSRS\_00TM\_AFP\_Forest  
Projection: Transverse\_Mercator