

BYLAW NO. LU 17/26

Being a Bylaw of Mountain View County in the Province of Alberta to amend Land Use Bylaw No. 10/24 affecting NW 3-34-3-5 pursuant to the Municipal Government Act.

---

The Council of Mountain View County, duly assembled, enacts that Bylaw No. 10/24 be amended as follows:

To redesignate from Agricultural District (A) to Residential Farmstead District (R-F) an approximate nine point eight eight (9.88) acres (3.99 hectares) in the Northwest (NW) Quarter of Section three (3), Township thirty-four (34), Range three (3), West of the fifth (5<sup>th</sup>) Meridian, as outlined on Schedule "A" attached hereto.

Received first reading June 10, 2026,

Received second reading \_\_\_\_\_,

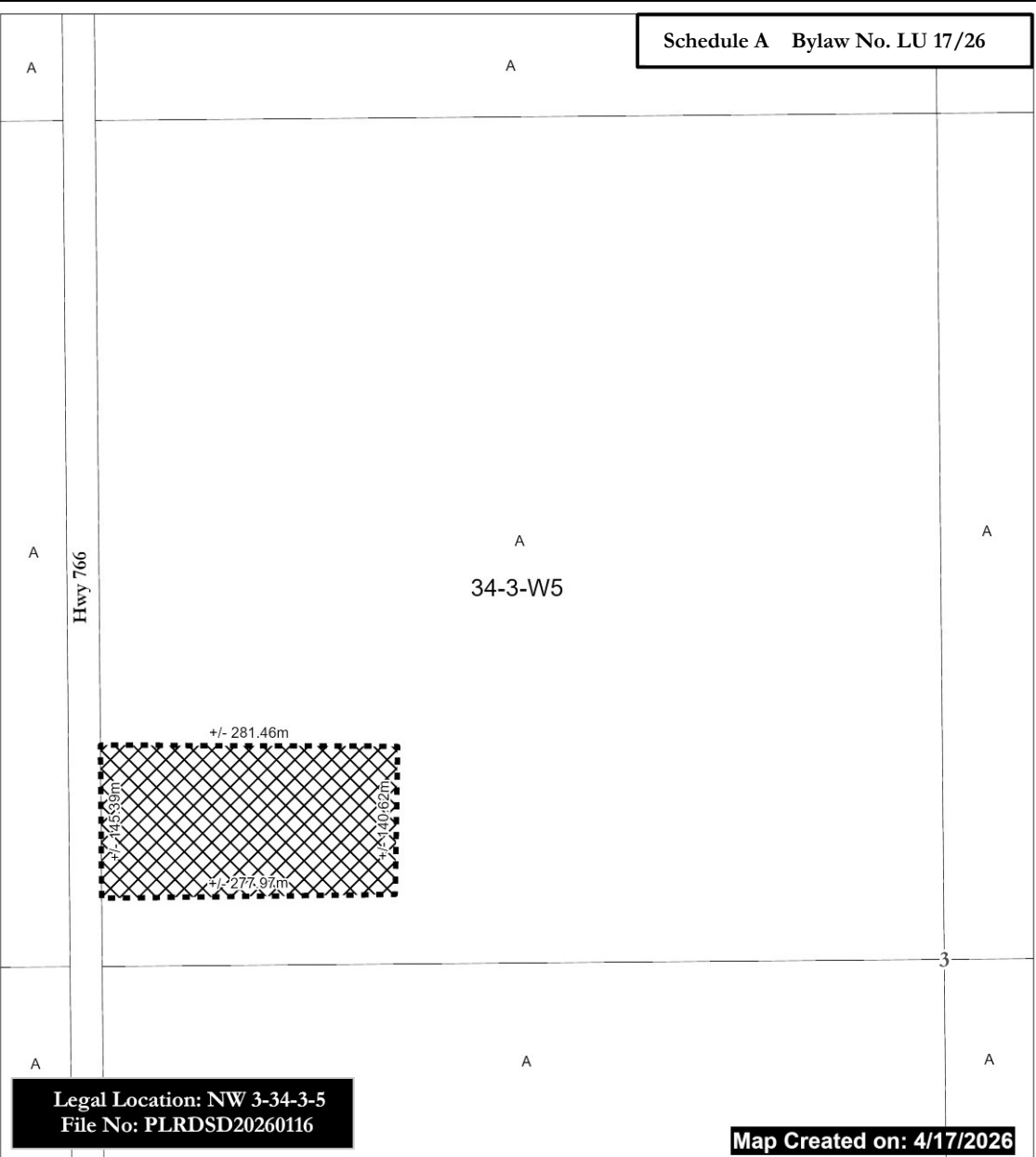
Received third reading \_\_\_\_\_.

\_\_\_\_\_  
Reeve

\_\_\_\_\_  
Chief Administrative Officer


\_\_\_\_\_  
Date of Signing

Schedule A Bylaw No. LU 17/26



Legal Location: NW 3-34-3-5  
File No: PLRDSD20260116

Map Created on: 4/17/2026

 From A to (R-F)  
(+/-) 9.88 ac ( 3.99 Ha )



- A = Agricultural District
- A(2) = Agricultural (2) District
- R-CR = Country Residential District
- R-CR1 = Country Residential (1) District
- RF = Residential Farmstead District
- C-LC = Local Commercial District
- I-BP = Business Park District
- I-HI = Heavy Industrial District
- P-PC = Parks and Conservation District

- P-PR = Parks and Recreation District
- P-PCR = Parks and Comprehensive Recreational District
- S-IEC = Institutional, Educational and Cultural District
- S-AP = Airport District
- DC = Direct Control
- AEP = Aggregate Extraction / Processing District



0 25 50 Meters

Scale: 1:5,000

Mountain View County  
NAD\_1983\_CSRS\_10TM\_AFP\_Feet  
Projection: Transverse\_Mercator