

Wildfire Preparedness Guide - 2021

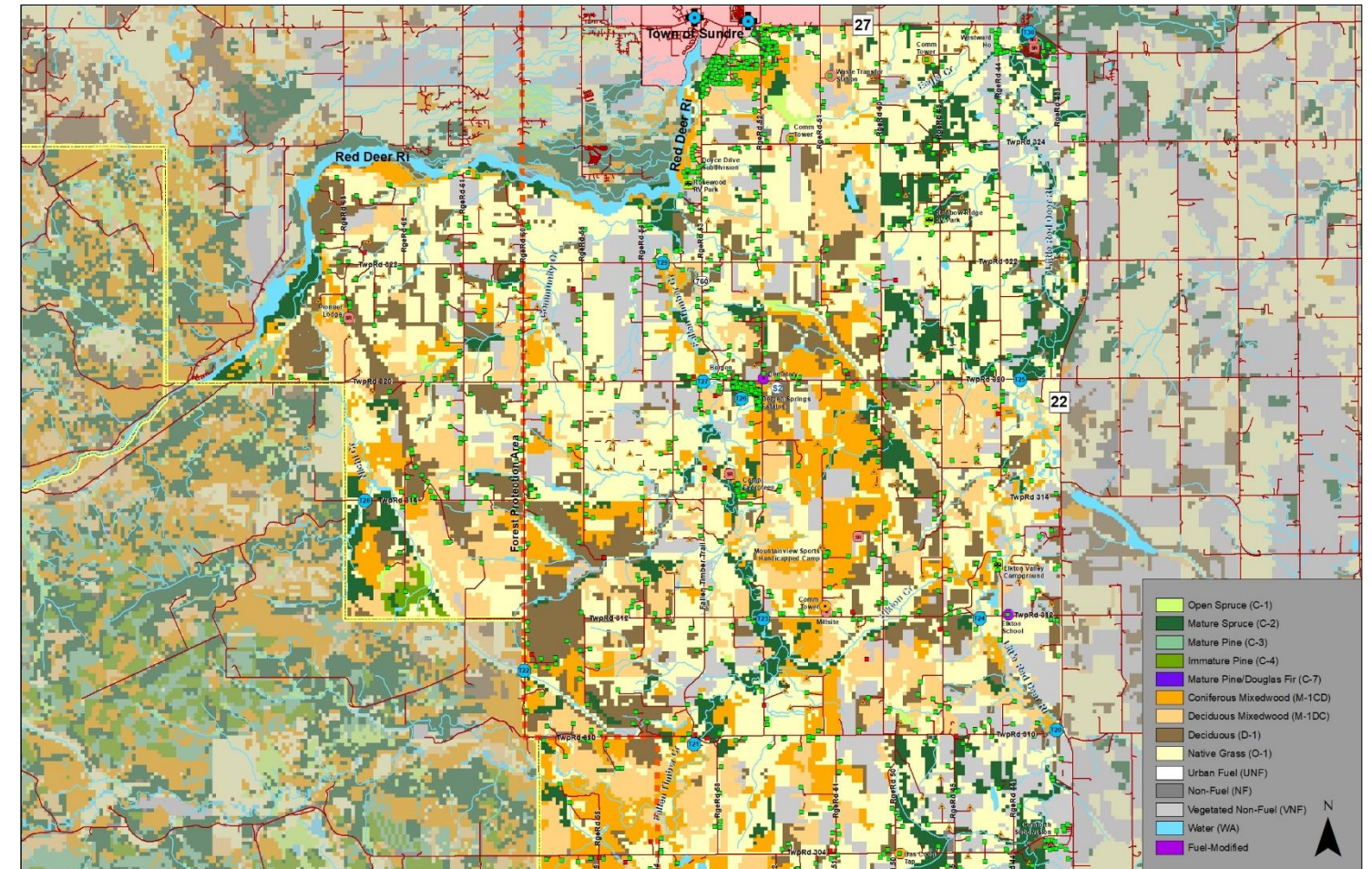
Bergen Area

Emergency Contacts		
AB. Agriculture & Forestry Fire Centre		
Office	403-845-8272	
Duty Officer	403-845-8243	
Mountain View County Director of Emergency Management		
Office	403-335-3311	
Cell	403-586-0040	
RCMP Detachment – Sundre		
Administration	403-638-3655	
AB. Emergency Mgt. Agency		
Provincial Operations Centre	1-866-618-2362	

Mutual-Aid Communications			
Type	Channel Name	Receive (MHz)	Transmit (MHz)
Command	Provincial Mutual-Aid	156.855	156.855
Air Advisory	Primary	129.800	129.800
Aircraft Monitoring	Mockingbird – FireNet 222 / Tone 173.8 Bluehill – FireNet 224 / Tone 173.8	152.555 152.585	157.815 157.845
Tactical (To be determined at time of incident)			
Evacuation			
Structure Protection			
Wildfire			
Other			

Functional Roles	
Functional Roles	Responsible Agency
Evacuation/Security	Mountain View County
Structure Protection	Mountain View County
Wildfire	Alberta Wildfire - within Forest Protection Area Mountain View County – outside Forest Protection Area

Critical Infrastructure, Special, and Hazardous Values at Risk			
Zone	Infrastructure	Special	Hazardous
BN1	N/A	N/A	N/A
BN2	1 – Comm Tower	1 – Bergen Cemetery 1 – Elkton School (Historic) 2 – Youth Samps	1 – Millsite (old slab/sawdust piles)
BN3	N/A	1 – Youth Camp	N/A
BN4	2 – Comm Towers	N/A	1 – Waste Transfer Station
BN5	N/A	N/A	N/A



- ### Evacuation Protocols
- Incident Commander(s) will advise the AAF Duty Officer and the Mountain View County Director of Emergency Management (DEM) when the wildfire may create need for evacuation.
 - Incident Commander(s), Mountain View County DEM, and AAF Duty Officer to determine need for Evacuation ALERT, ORDER, and/or RESCIND and the trigger points for each.
 - Mountain View County DEM will issue Evacuation ALERT, ORDER, and/or RESCIND as determined.
 - An Evacuation/Security Branch will be formed in the Incident Management Team Operations Section to implement the evacuation.
 - Emergency Social Services will be provided to evacuees through the Mountain View County Emergency Coordination Centre.

MVC
Bearberry Area Pre-Plan

Town of Sundre

BN5

BN4

BN3

Red Deer Ri

Red Deer Ri

BN1

BN2

MD of Bighorn
Pre-Plan

MVC Water Valley Area Pre-Plan

Jurisdictional Boundaries

- MD Boundary
- Pre-Plan Response Zone

Values at Risk

- Ignition-Resistant Roof
- Combustible/Unknown Roof
- Critical Infrastructure Site
- Special Value Site
- Hazardous Site
- Oil & Gas Site
- Campground
- Day Use
- Trailhead

Access

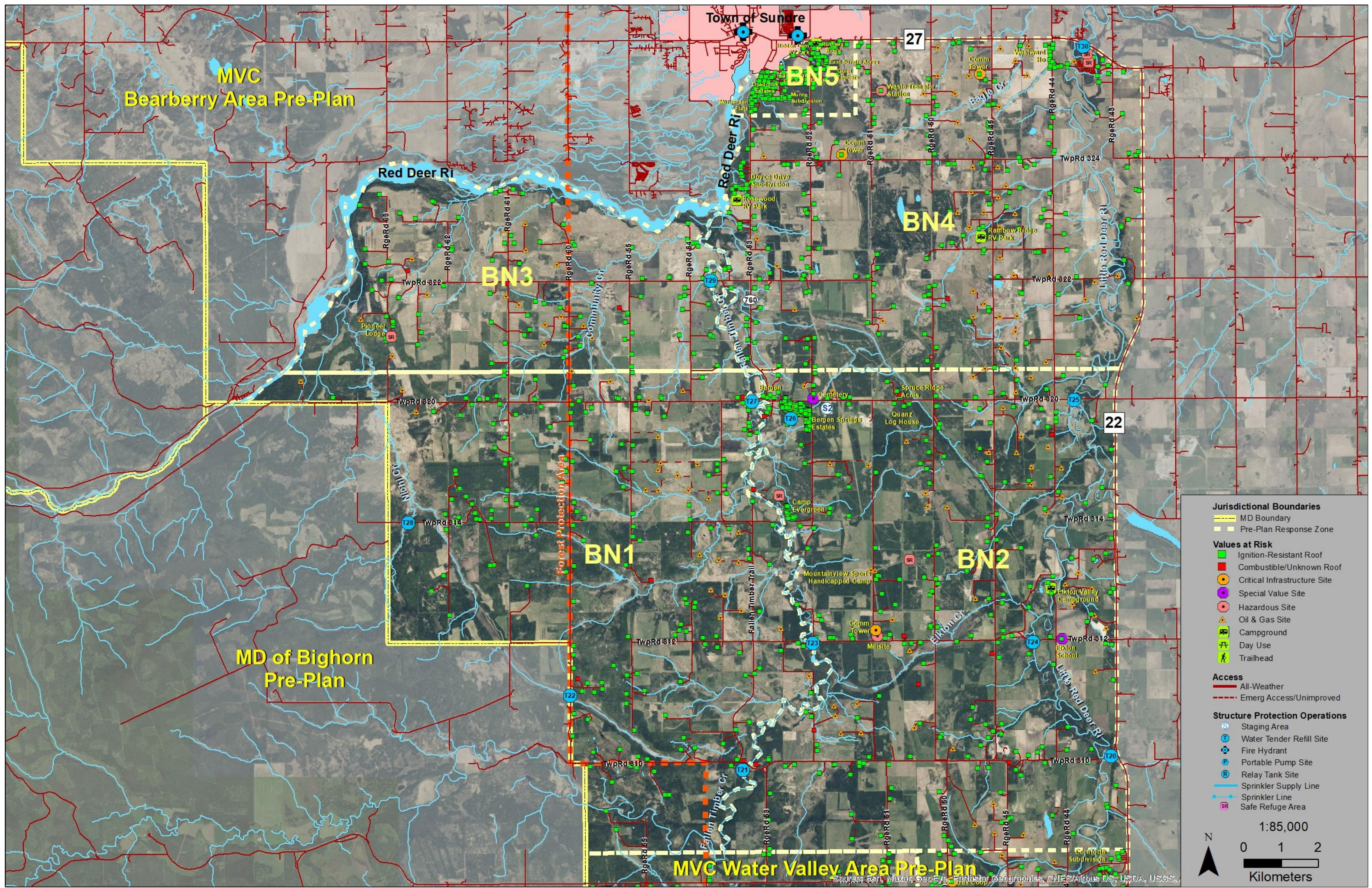
- All-Weather
- Emerg Access/Unimproved

Structure Protection Operations

- Staging Area
- Water Tender Refill Site
- Fire Hydrant
- Portable Pump Site
- Relay Tank Site
- Sprinkler Supply Line
- Sprinkler Line
- Safe Refuge Area

1:85,000

0 1 2
Kilometers



Source: Esri, Maxar, GeoEye, Earthstar Geographics, CNES/Airbus DS, USDA, USGS,

Structure Protection Pre-Plan - 2021

Bergen Area - Overview

Risk Assessment	
Feature	Description
Wildfire Behaviour Potential	<ul style="list-style-type: none"> Predominantly cultivated fields, mixedwood (M-1), deciduous (D-1), and cured-grass (O-1) with scattered spruce (C-2) and pine (C-3) fuel types along creeks/streams and in west-portion of area Topography is rolling with limited influence on wildfire behaviour Predominant and strongest winds from the southwest and southeast
Structural	<ul style="list-style-type: none"> Primarily ignition-resistant roofing materials, scattered structures with combustible wood-shake or old asphalt-shingle roofing materials Many structures with combustible siding and decking materials Vegetation clearance is inadequate for many structures in west-portion of area
Infrastructure	<ul style="list-style-type: none"> ACCESS – some properties with narrow/steep/long driveways through dense coniferous or mixedwood fuels – CAUTION ADVISED FOR BUMP + RUN OPERATIONS Several properties with heavy, locked gates - Un-rated private bridges on some properties WATER SUPPLY – Dugouts and natural water sources throughout area - Pressurized fire-hydrants at Cremona and Sundre POWERLINES – Overhead distribution powerlines throughout area GAS – primarily underground natural gas – scattered above-ground propane tanks and fuel tanks at risk COMMUNICATIONS – weak to no cell coverage on west-side of area

Mutual-Aid Communications			
Command	Channel Name	Receive (MHz)	Transmit (MHz)
Command	Provincial Mutual-Aid	156.855	156.855
Tactical (to be assigned at incident)			

Water Supply				
Map ID	Name	Location	Type	Delivery Method
Pressurized Fire Hydrants – Village of Cremona 2-65mm AMA/BAT thread & 1-100mm Storz				
Pressurized Fire Hydrants – Town of Sundre 2-65mm AMA/BAT thread & 1-125mm Storz				
T20	Little Red Deer 310	SE4-31-04-W5M	Little Red Deer River	Draft 3-6m
T21	Fallen Timber 310	NE33-30-05-W5M	Fallen Timber Creek	Draft >6m
T22	RgeRd 60	SE12-31-06-W5M	Unnamed Creek	Draft 3-6m
T23	Fallen Timber 312	5176-TwpRd 312	Fallen Timber Creek	Draft 3-6m
T24	Little Red Deer 312	NE8-31-04-W5M	Little Red Deer River	Draft >6m
T25	Little Red Deer 320	NW33-31-04-W5M	Little Red Deer River	Draft 3-6m
T26	Bergen Springs Estates	5227-TwpRd 320	Dry Hydrant 150mm F-Threaded	Draft <3m
T27	Fallen Timber 320	SW3-32-05-W5M	Fallen Timber Cr	Portable Pump
T28	Nichi Creek	NW22-31-06-W5M	Nichi Creek	Draft 3-6m
T29	Fallen Timber 322	5346-TwpRd 322	Fallen Timber Creek	Portable Pump
T30	Westward Ho Park	324551-RgeRd 44	Little Red Deer River	Draft 3-6m

Staging Areas			
Map #	Name/Address	Lat/Long	Description
S2	Bergen Gravel Pit	51° 42.350' 114° 36.569'	MVC Gravel Pit 5161 – TwpRd 320 (7.7km west of Hwy22)

Values at Risk/Structure Protection Operations (refer to Zone Plans for tactical details)

Value Name	Values at Risk			Strategic Action(s)	Structure Protection Operations Tactics (Refer to Zone Plans for tactical details)	Water Source	Comments
	Total	Number of Structures					
		Ignition-Resistant	Combustible/Unknown				
Mountainview Sports Handicapped Society – YOUTH CAMP (BN2) 31301-RgeRd 51 403-637-2702	7	7	0	Prep & Go	<ul style="list-style-type: none"> YOUTH CAMP – Evacuate early Deploy & activate Zone 1-2 sprinkler sets on structures at risk from relay tanks Post-impingement patrol for spot-fire ignitions 	Fallen Timber 312 (T23)	Special: Youth camp
Elkton Valley Campground (BN2) 31250-RgeRd 44 403-335-8099	4	4	0	Prep & Defend	<ul style="list-style-type: none"> Bump & Run with apparatus for spot-fire ignitions 	Little Red Deer River (T24)	
Camp Evergreen – YOUTH CAMP (BN2) 31404-RgeRd 52 403-638-4230	18	18	0	Prep & Go	<ul style="list-style-type: none"> YOUTH CAMP – Evacuate early Deploy & activate Zone 1-2 sprinkler sets on structures at risk from Fallen Timber Creek Post-impingement patrol for spot-fire ignitions 	Fallen Timber Creek	Special: Livestock onsite
Bergen (BN2) TwpRd 320/Hwy 760	23	20	3	Prep & Defend	<ul style="list-style-type: none"> Bump & Run with apparatus for spot-fire ignitions 	Fallen Timber 320 (T27) Bergen Springs Estates (T26)	Special: Bergen Cemetery Infrastructure: Bergen Community Hall (Reception Centre)
Bergen Springs Estates – Cabins/Dwellings and RV's (BN2) 3227-TwpRd 320	165	163	2	Prep & Defend (West) Prep & Go (East)	<ul style="list-style-type: none"> Zone 1-2 perimeter sprinkler lines from ponds Bump & Run with apparatus in west section and post-impingement patrol with apparatus in east-section 	Bergen Springs Estates (T26) Fallen Timber (T27)	Hazardous: Narrow access roads with poor turn-arounds for apparatus
Pioneer Lodge – YOUTH CAMP (BN3) 3221-RgeRd 63 403-638-2660	9	9	0	Prep & Defend	<ul style="list-style-type: none"> YOUTH CAMP – Evacuate early Deploy and activate Zone 1-2 sprinkler sets on structures at risk from ponds Bump & Run with apparatus for spot-fire ignitions 	Pond & Swimming Pool	Special: Livestock onsite
Rosewood RV Park (BN4) 32322-Hwy 760	2	2	0	Prep & Defend	<ul style="list-style-type: none"> Bump & Run with apparatus for spot-fire ignitions 	Red Deer River Sundre Hydrants	
Doyce Drive Subdivision (BN4) 32342-32376 Hwy 760	13	13	0	Prep & Go	<ul style="list-style-type: none"> Deploy & activate Zone 1-2 sprinkler sets on structures at risk from Red Deer River and/or relay tanks 	Red Deer River Sundre Hydrants	
Rainbow Ridge RV Park (BN4) 32280-RgeRd 45	6	6	0	Prep & Defend	<ul style="list-style-type: none"> Bump & Run with apparatus for spot-fire ignitions 	Pond	
Westward Ho & Westward Ho Park (BN4) RgeRd 44/Hwy 27	21	21	0	Prep & Defend	<ul style="list-style-type: none"> Bump & Run with apparatus for spot-fire ignitions 	Little Red Deer River (T30)	
Southeast Sundre Subdivisions (BN5)	143	142	1	Prep & Defend	<ul style="list-style-type: none"> Deploy & activate Zone 1-2 sprinkler sets on structures at risk from ponds/dugouts and/or relay tanks Bump & Run with apparatus for spot-fire ignitions 	Sundre Hydrants Ponds/Dugouts	Hazardous: Waste Transfer Station to east of area

MVC
Bearberry Area Pre-Plan

Town of Sunare

BN5

BN4

BN3

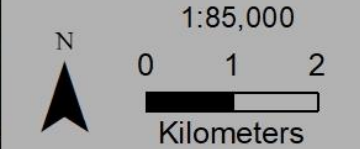
BN1

BN2

MD of Bighorn
Pre-Plan

MVC Water Valley Area Pre-Plan

- Jurisdictional Boundaries**
- MD Boundary
 - Pre-Plan Response Zone
- Values at Risk**
- Ignition-Resistant Roof
 - Combustible/Unknown Roof
 - Critical Infrastructure Site
 - Special Value Site
 - Hazardous Site
 - Oil & Gas Site
 - Campground
 - Day Use
 - Trailhead
- Access**
- All-Weather
 - Emerg Access/Unimproved
- Structure Protection Operations**
- Staging Area
 - Water Tender Refill Site
 - Fire Hydrant
 - Portable Pump Site
 - Relay Tank Site
 - Sprinkler Supply Line
 - Sprinkler Line
 - Safe Refuge Area



Source: Esri, Maxar, GeoEye, Earthstar Geographics, CNES/Airbus DS, USDA, USGS,

Structure Protection Pre-Plan - 2021

Bergen Area – Zone BN1

Risk Assessment

Feature	Description
Wildfire Behaviour Potential	<ul style="list-style-type: none"> Predominantly cultivated fields, mixedwood (M-1), deciduous (D-1), and cured-grass (O-1) with scattered spruce (C-2) and pine (C-3) fuel types along creeks/streams and in west-portion of area Topography is rolling with limited influence on wildfire behaviour Predominant and strongest winds from the southwest and southeast
Structural	<ul style="list-style-type: none"> Primarily ignition-resistant roofing materials, scattered structures with combustible wood-shake or old asphalt-shingle roofing materials Many structures with combustible siding and decking materials Vegetation clearance is inadequate for many structures in west-portion of area
Infrastructure	<ul style="list-style-type: none"> ACCESS – some properties with narrow/steep/long driveways through dense coniferous or mixedwood fuels – CAUTION ADVISED FOR BUMP + RUN OPERATIONS Several properties with heavy, locked gates - Un-rated private bridges on some properties WATER SUPPLY – Dugouts and natural water sources throughout area - Pressurized fire-hydrants at Cremona and Sundre POWERLINES – Overhead distribution powerlines throughout area GAS – primarily underground natural gas – scattered above-ground propane tanks and fuel tanks at risk COMMUNICATIONS – weak to no cell coverage on west-side of area

Mutual-Aid Communications

Command	Channel Name	Receive (MHz)	Transmit (MHz)
Command	Provincial Mutual-Aid	156.855	156.855
Tactical (to be assigned at incident)			

Water Supply

Map ID	Name	Location	Type	Delivery Method
Pressurized Fire Hydrants – Village of Cremona 2-65mm AMA/BAT thread & 1-100mm Storz				
Pressurized Fire Hydrants – Town of Sundre 2-65mm AMA/BAT thread & 1-125mm Storz				
T20	Little Red Deer 310	SE4-31-04-W5M	Little Red Deer River	Draft 3-6m
T21	Fallen Timber 310	NE33-30-05-W5M	Fallen Timber Creek	Draft >6m
T22	RgeRd 60	SE12-31-06-W5M	Unnamed Creek	Draft 3-6m
T23	Fallen Timber 312	5176-TwpRd 312	Fallen Timber Creek	Draft 3-6m
T24	Little Red Deer 312	NE8-31-04-W5M	Little Red Deer River	Draft >6m
T25	Little Red Deer 320	NW33-31-04-W5M	Little Red Deer River	Draft 3-6m
T26	Bergen Springs Estates	5227-TwpRd 320	Dry Hydrant 150mm F-Threaded	Draft <3m
T27	Fallen Timber 320	SW3-32-05-W5M	Fallen Timber Cr	Portable Pump
T28	Nichi Creek	NW22-31-06-W5M	Nichi Creek	Draft 3-6m
T29	Fallen Timber 322	5346-TwpRd 322	Fallen Timber Creek	Portable Pump
T30	Westward Ho Park	324551-RgeRd 44	Little Red Deer River	Draft 3-6m

Staging Areas

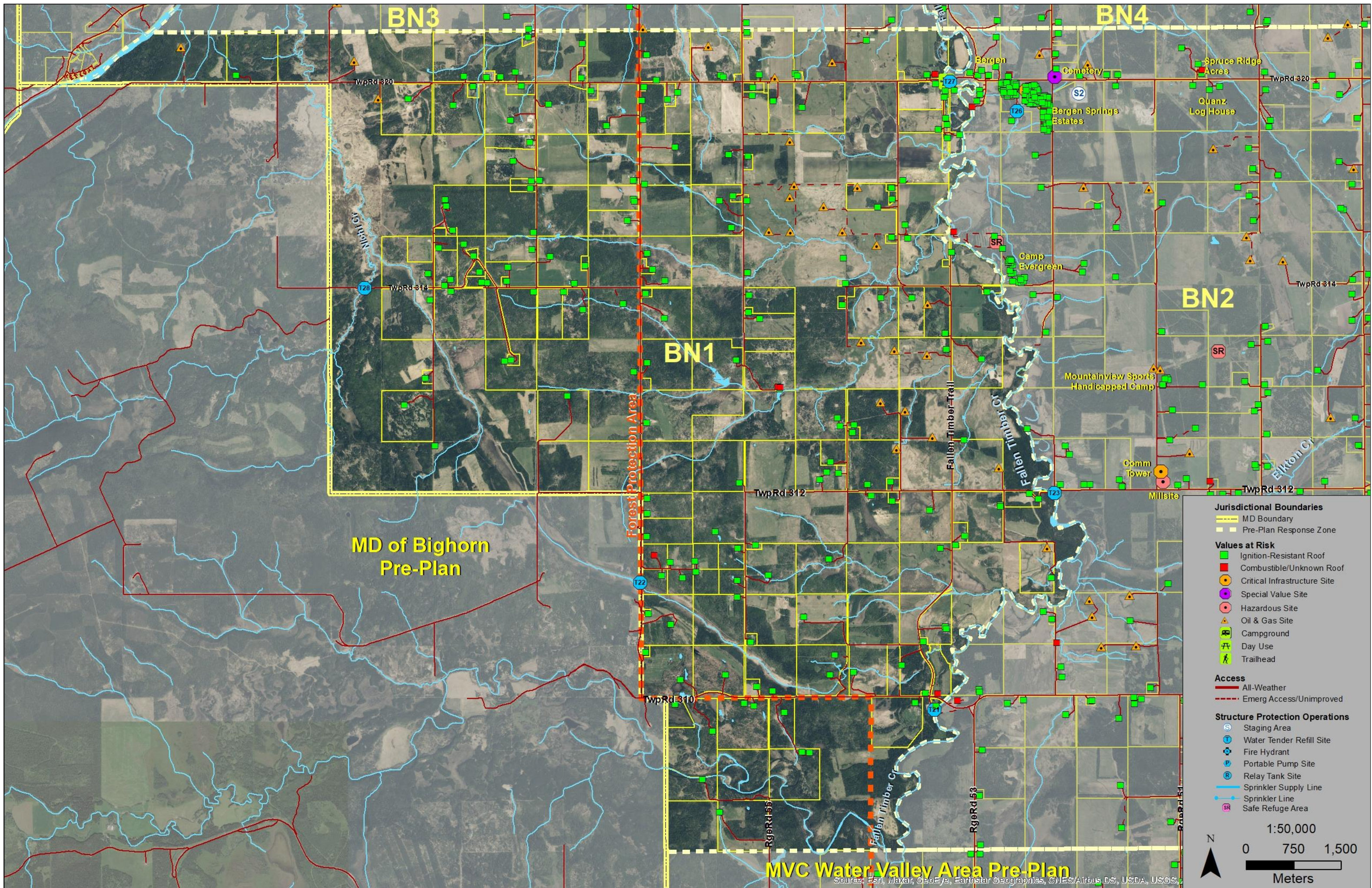
Map #	Name/Address	Lat/Long	Description
S2	Bergen Gravel Pit	51° 42.350' 114° 36.569'	MVC Gravel Pit 5161 – TwpRd 320 (7.7km west of Hwy22)

Values at Risk/Structure Protection Operations

Value Name	Values at Risk			Strategic Action(s)	Tactics	Water Source	Comments
	Total	Number of Structures					
		Ignition-Resistant	Combustible/Unknown				
West of Forest Protection Area Boundary	66	66	0	Prep & Defend Prep & Go	<ul style="list-style-type: none"> Scout access and fuel conditions prior to committing to Prep & Defend Bump & Run with apparatus where possible Zone 1-2 sprinkler sets on structures at risk from natural water sources and/or relay tanks 	<ul style="list-style-type: none"> Fallen Timber Cr (T21, T23, T27) Nichi Cr (T28) 	
East of Forest Protection Area Boundary	129	124	5	Prep & Defend Prep & Go	<ul style="list-style-type: none"> Scout access and fuel conditions prior to committing to Prep & Defend Bump & Run with apparatus where possible Zone 1-2 sprinkler sets on structures at risk from natural water sources and/or relay tanks 	<ul style="list-style-type: none"> RgeRd 60 (T22) Dugouts & Ponds 	

Sprinkler Tactics and Resources

Area	Sprinkler Tactics – refer to Sprinkler Plans	Minimum Resource Requirements			
		Pumps (Total Volume)	Supply Hose	Sprinkler Heads	Other
Not Applicable					



BN3

BN4

BN1

BN2

MD of Bighorn
Pre-Plan

MVC Water Valley Area Pre-Plan

Jurisdictional Boundaries

- MD Boundary
- Pre-Plan Response Zone

Values at Risk

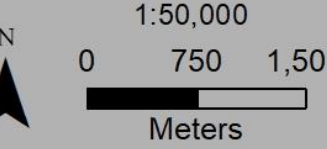
- Ignition-Resistant Roof
- Combustible/Unknown Roof
- Critical Infrastructure Site
- Special Value Site
- Hazardous Site
- Oil & Gas Site
- Campground
- Day Use
- Trailhead

Access

- All-Weather
- Emerg Access/Unimproved

Structure Protection Operations

- Staging Area
- Water Tender Refill Site
- Fire Hydrant
- Portable Pump Site
- Relay Tank Site
- Sprinkler Supply Line
- Sprinkler Line
- Safe Refuge Area



Source: Esri, Maxar, GeoEye, Earthstar Geographics, CNES/Airbus DS, USDA, USGS

Structure Protection Pre-Plan - 2021

Bergen Area – Zone BN2

Risk Assessment	
Feature	Description
Wildfire Behaviour Potential	<ul style="list-style-type: none"> Predominantly cultivated fields, mixedwood (M-1), deciduous (D-1), and cured-grass (O-1) with scattered spruce (C-2) and pine (C-3) fuel types along creeks/streams and in west-portion of area Topography is rolling with limited influence on wildfire behaviour Predominant and strongest winds from the southwest and southeast
Structural	<ul style="list-style-type: none"> Primarily ignition-resistant roofing materials, scattered structures with combustible wood-shake or old asphalt-shingle roofing materials Many structures with combustible siding and decking materials Vegetation clearance is inadequate for many structures in west-portion of area
Infrastructure	<ul style="list-style-type: none"> ACCESS – some properties with narrow/steep/long driveways through dense coniferous or mixedwood fuels – CAUTION ADVISED FOR BUMP + RUN OPERATIONS Several properties with heavy, locked gates - Un-rated private bridges on some properties WATER SUPPLY – Dugouts and natural water sources throughout area - Pressurized fire-hydrants at Cremona and Sundre POWERLINES – Overhead distribution powerlines throughout area GAS – primarily underground natural gas – scattered above-ground propane tanks and fuel tanks at risk COMMUNICATIONS – weak to no cell coverage on west-side of area

Mutual-Aid Communications			
Command	Channel Name	Receive (MHz)	Transmit (MHz)
Command	Provincial Mutual-Aid	156.855	156.855
Tactical (to be assigned at incident)			

Water Supply				
Map ID	Name	Location	Type	Delivery Method
Pressurized Fire Hydrants – Village of Cremona 2-65mm AMA/BAT thread & 1-100mm Storz				
Pressurized Fire Hydrants – Town of Sundre 2-65mm AMA/BAT thread & 1-125mm Storz				
T20	Little Red Deer 310	SE4-31-04-W5M	Little Red Deer River	Draft 3-6m
T21	Fallen Timber 310	NE33-30-05-W5M	Fallen Timber Creek	Draft >6m
T22	RgeRd 60	SE12-31-06-W5M	Unnamed Creek	Draft 3-6m
T23	Fallen Timber 312	5176-TwpRd 312	Fallen Timber Creek	Draft 3-6m
T24	Little Red Deer 312	NE8-31-04-W5M	Little Red Deer River	Draft >6m
T25	Little Red Deer 320	NW33-31-04-W5M	Little Red Deer River	Draft 3-6m
T26	Bergen Springs Estates	5227-TwpRd 320	Dry Hydrant 150mm F-Threaded	Draft <3m
T27	Fallen Timber 320	SW3-32-05-W5M	Fallen Timber Cr	Portable Pump
T28	Nichi Creek	NW22-31-06-W5M	Nichi Creek	Draft 3-6m
T29	Fallen Timber 322	5346-TwpRd 322	Fallen Timber Creek	Portable Pump
T30	Westward Ho Park	324551-RgeRd 44	Little Red Deer River	Draft 3-6m

Staging Areas			
Map #	Name/Address	Lat/Long	Description
S2	Bergen Gravel Pit	51° 42.350' 114° 36.569'	MVC Gravel Pit 5161 – TwpRd 320 (7.7km west of Hwy22)

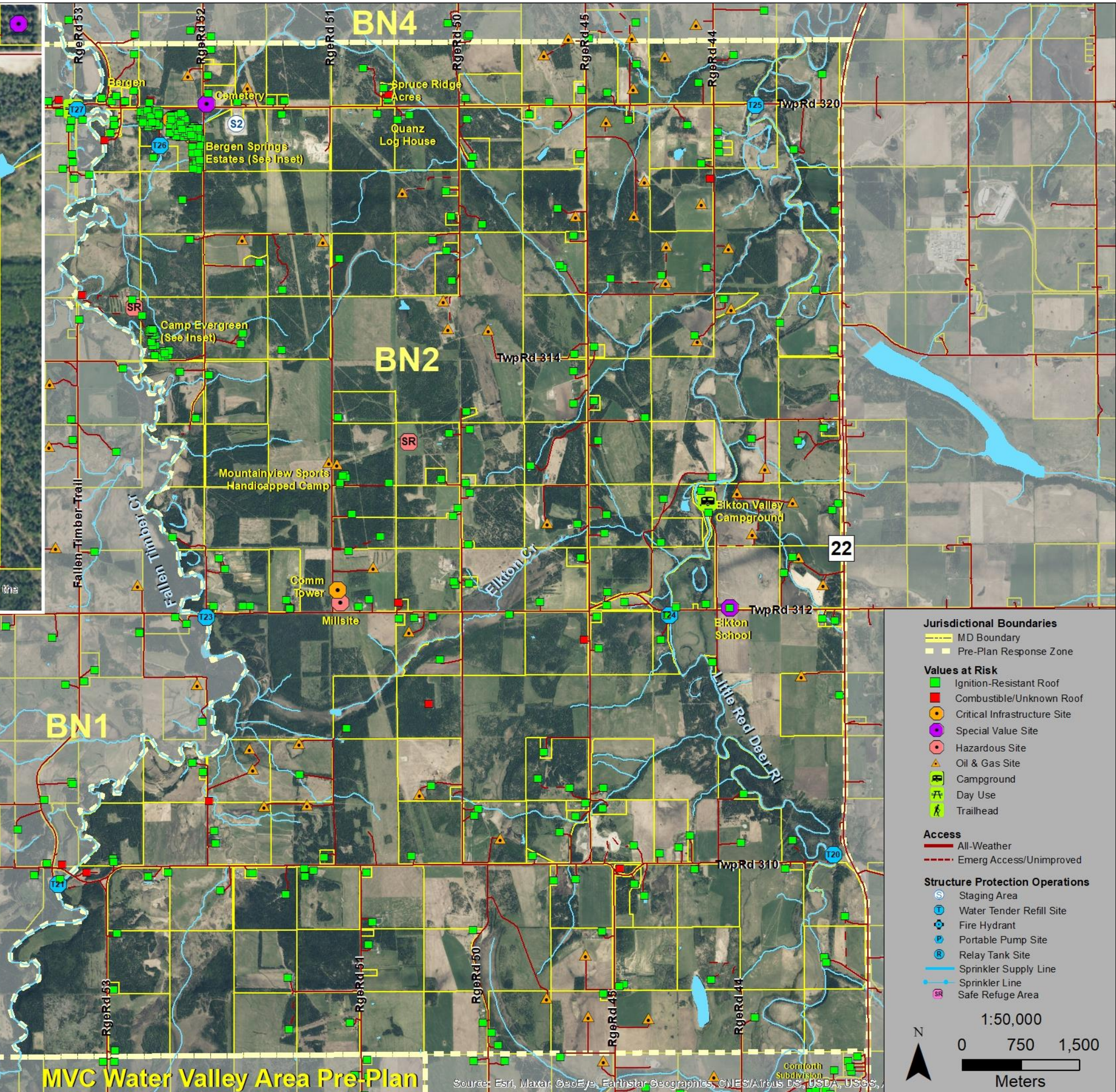
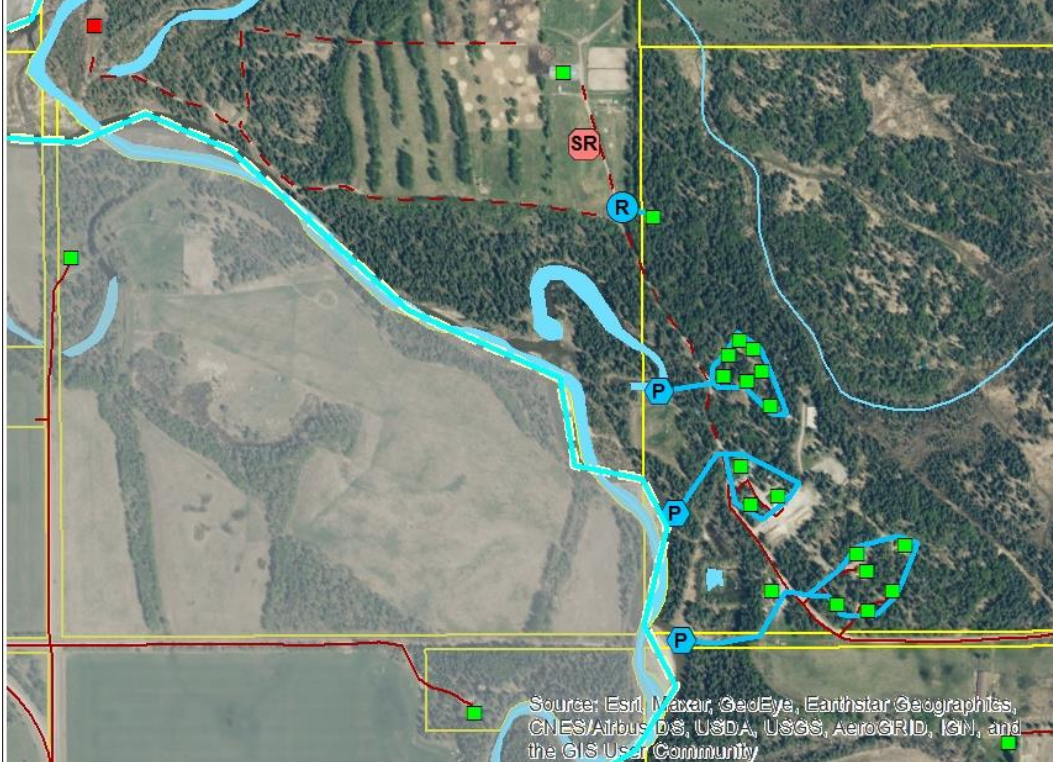
Values at Risk/Structure Protection Operations							
Value Name	Values at Risk			Strategic Action(s)	Structure Protection Operations Tactics	Water Source	Comments
	Total	Number of Structures					
		Roof Type	Ignition-Resistant				
Mountainview Sports Handicapped Society – YOUTH CAMP 31301-RgeRd 51 403-637-2702	7	7	0	Prep & Go	<ul style="list-style-type: none"> YOUTH CAMP – Evacuate early Deploy & activate Zone 1-2 sprinkler sets on structures at risk from relay tanks Post-impingement patrol for spot-fire ignitions 	Fallen Timber 312 (T23)	Special: Youth camp
Elkton Valley Campground 31250-RgeRd 44 403-335-8099	4	4	0	Prep & Defend	<ul style="list-style-type: none"> Bump & Run with apparatus for spot-fire ignitions 	Little Red Deer River (T24)	
Camp Evergreen – YOUTH CAMP 31404-RgeRd 52 403-638-4230	18	18	0	Prep & Go	<ul style="list-style-type: none"> YOUTH CAMP – Evacuate early Deploy & activate Zone 1-2 sprinkler sets on structures at risk from Fallen Timber Creek Post-impingement patrol for spot-fire ignitions 	Fallen Timber Creek	Special: Livestock onsite
Bergen TwpRd 320/Hwy 760	23	20	3	Prep & Defend	<ul style="list-style-type: none"> Bump & Run with apparatus for spot-fire ignitions 	<ul style="list-style-type: none"> Fallen Timber 320 (T27) Bergen Springs Estates (T26) 	Special: Bergen Cemetery Infrastructure: Bergen Community Hall (Reception Centre)
Bergen Springs Estates – Cabins/Dwellings and RV's 3227-TwpRd 320	165	163	2	Prep & Defend (West) Prep & Go (East)	<ul style="list-style-type: none"> Deploy & activate Zone 1-2 perimeter sprinkler lines from ponds Bump & Run with apparatus in west section and post-impingement patrol with apparatus in east-section 	<ul style="list-style-type: none"> Bergen Springs Estates (T26) Fallen Timber (T27) 	Hazardous: Narrow access roads with poor turn-arounds for apparatus

Sprinkler Tactics and Resources					
Area	Sprinkler Tactics – refer to Sprinkler Plans	Minimum Resource Requirements			
		Pumps (Total Volume)	Supply Hose	Sprinkler Heads	Other
Mountainview Sports Handicapped Society	Deploy & activate Zone 1-2 sprinkler sets on structures at risk (7) from relay tanks	2 (550 Lpm)	300m	12	3 – Relay tanks (9,500 L each)
Camp Evergreen	Deploy & activate Zone 1-2 sprinkler sets on structures at risk (17) from Fallen Timber Creek	4 (1575 Lpm)	1500m	35	1 – Relay tank (9,500 L)
Bergen Springs Estates	Deploy & activate Zone 1-2 perimeter sprinkler lines from ponds	3-HiVol (5400 Lpm)	2625m	120	

Inset - Bergen Springs Estates



Inset - Camp Evergreen



- Jurisdictional Boundaries**
- MD Boundary
 - Pre-Plan Response Zone
- Values at Risk**
- Ignition-Resistant Roof
 - Combustible/Unknown Roof
 - Critical Infrastructure Site
 - Special Value Site
 - Hazardous Site
 - Oil & Gas Site
 - Campground
 - Day Use
 - Trailhead
- Access**
- All-Weather
 - Emerg Access/Unimproved
- Structure Protection Operations**
- Staging Area
 - Water Tender Refill Site
 - Fire Hydrant
 - Portable Pump Site
 - Relay Tank Site
 - Sprinkler Supply Line
 - Sprinkler Line
 - Safe Refuge Area

MVC Water Valley Area Pre-Plan

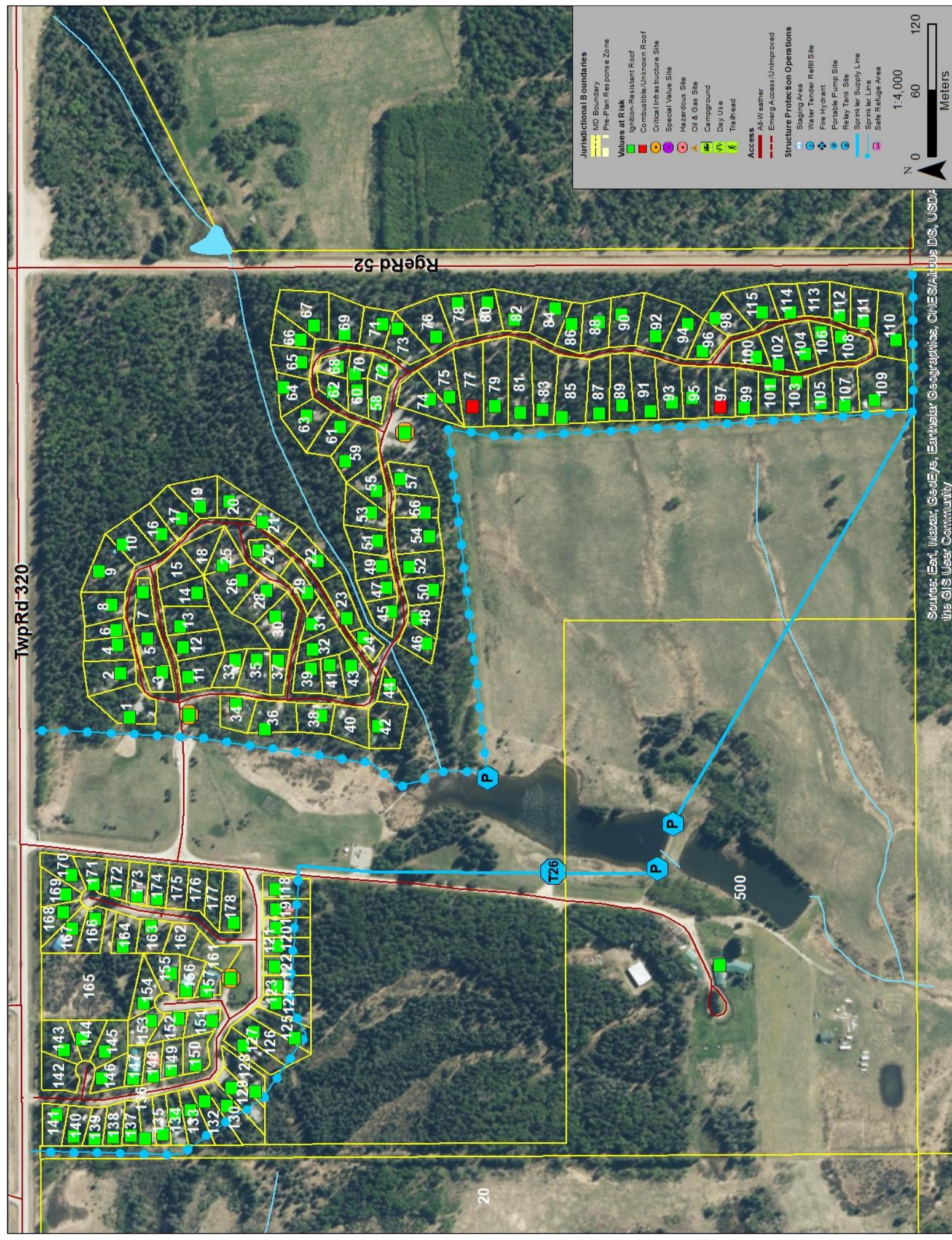
Source: Esri, Maxar, GeoEye, Earthstar Geographics, CNES/Airbus DS, USDA, USGS, and the GIS User Community

Sprinkler Plan – 2021

Bergen Area – Bergen Springs Estates (BN2)

Sprinkler Tactics & Resources

Area	Sprinkler Tactics	Minimum Resource Requirements		
		Pumps (Total Volume)	Supply Hose	Sprinkler Heads
Bergen Springs Estates	Deploy & activate Zone 1-2 perimeter sprinkler lines from ponds	3-HiVol (5400 Lpm)	2625m	120



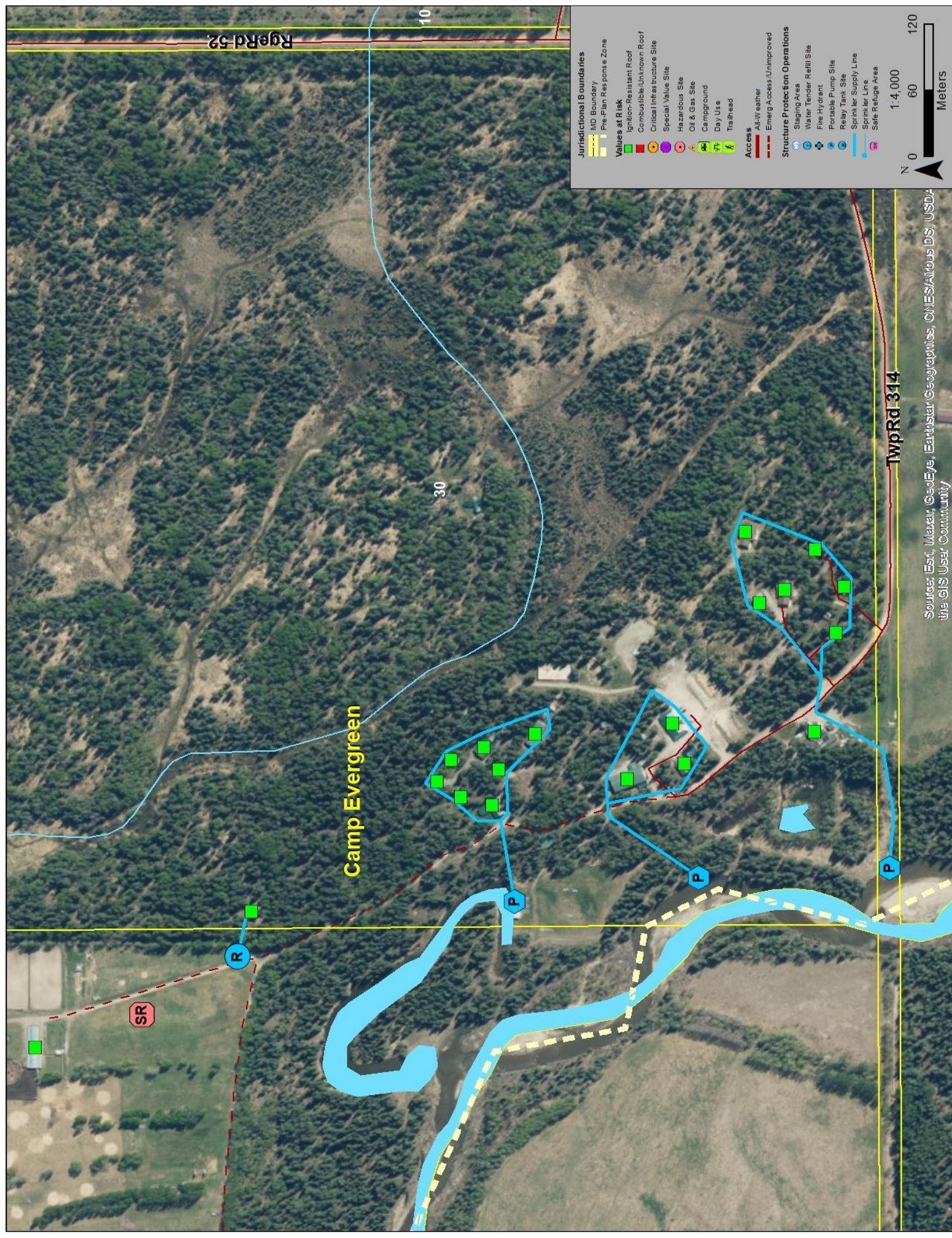
Deployment Notes/Inventory:



Sprinkler Plan – 2021 Bergen Area – Camp Evergreen (BN2)

Sprinkler Tactics & Resources

Area	Sprinkler Tactics	Minimum Resource Requirements			Other
		Pumps (Total Volume)	Supply Hose	Sprinkler Heads	
Camp Evergreen	Deploy & activate Zone 1-2 sprinkler sets on structures at risk (17) from Fallen Timber Creek	4 (1575 Lpm)	1500m	35	1 – Relay tank (9,500 L)



Deployment Notes/Inventory:



Sprinkler Plan – 2021

Bergen Area – Mountainview Sports Handicapped Society (BN2)

Sprinkler Tactics & Resources

Area	Sprinkler Tactics	Minimum Resource Requirements		
		Pumps (Total Volume)	Supply Hose	Sprinkler Heads
Mountainview Sports Handicapped Society	Deploy & activate Zone 1-2 sprinkler sets on structures at risk (7) from relay tanks	2 (550 Lpm)	300m	12
				3 – Relay tanks (9,500 L each)



Deployment Notes/Inventory:



Structure Protection Pre-Plan - 2021

Bergen Area – Zone BN3

Risk Assessment

Feature	Description
Wildfire Behaviour Potential	<ul style="list-style-type: none"> Predominantly cultivated fields, mixedwood (M-1), deciduous (D-1), and cured-grass (O-1) with scattered spruce (C-2) and pine (C-3) fuel types along creeks/streams and in west-portion of area Topography is rolling with limited influence on wildfire behaviour Predominant and strongest winds from the southwest and southeast
Structural	<ul style="list-style-type: none"> Primarily ignition-resistant roofing materials, scattered structures with combustible wood-shake or old asphalt-shingle roofing materials Many structures with combustible siding and decking materials Vegetation clearance is inadequate for many structures in west-portion of area
Infrastructure	<ul style="list-style-type: none"> ACCESS – some properties with narrow/steep/long driveways through dense coniferous or mixedwood fuels – CAUTION ADVISED FOR BUMP + RUN OPERATIONS Several properties with heavy, locked gates - Un-rated private bridges on some properties WATER SUPPLY – Dugouts and natural water sources throughout area - Pressurized fire-hydrants at Cremona and Sundre POWERLINES – Overhead distribution powerlines throughout area GAS – primarily underground natural gas – scattered above-ground propane tanks and fuel tanks at risk COMMUNICATIONS – weak to no cell coverage on west-side of area

Mutual-Aid Communications

Command	Channel Name	Receive (MHz)	Transmit (MHz)
Command	Provincial Mutual-Aid	156.855	156.855
Tactical (to be assigned at incident)			

Water Supply

Map ID	Name	Location	Type	Delivery Method
Pressurized Fire Hydrants – Village of Cremona 2-65mm AMA/BAT thread & 1-100mm Storz				
Pressurized Fire Hydrants – Town of Sundre 2-65mm AMA/BAT thread & 1-125mm Storz				
T20	Little Red Deer 310	SE4-31-04-W5M	Little Red Deer River	Draft 3-6m
T21	Fallen Timber 310	NE33-30-05-W5M	Fallen Timber Creek	Draft >6m
T22	RgeRd 60	SE12-31-06-W5M	Unnamed Creek	Draft 3-6m
T23	Fallen Timber 312	5176-TwpRd 312	Fallen Timber Creek	Draft 3-6m
T24	Little Red Deer 312	NE8-31-04-W5M	Little Red Deer River	Draft >6m
T25	Little Red Deer 320	NW33-31-04-W5M	Little Red Deer River	Draft 3-6m
T26	Bergen Springs Estates	5227-TwpRd 320	Dry Hydrant 150mm F-Threaded	Draft <3m
T27	Fallen Timber 320	SW3-32-05-W5M	Fallen Timber Cr	Portable Pump
T28	Nichi Creek	NW22-31-06-W5M	Nichi Creek	Draft 3-6m
T29	Fallen Timber 322	5346-TwpRd 322	Fallen Timber Creek	Portable Pump
T30	Westward Ho Park	324551-RgeRd 44	Little Red Deer River	Draft 3-6m

Staging Areas

Map #	Name/Address	Lat/Long	Description
S2	Bergen Gravel Pit	51° 42.350' 114° 36.569'	MVC Gravel Pit 5161 – TwpRd 320 (7.7km west of Hwy22)

Values at Risk/Structure Protection Operations

Value Name	Values at Risk			Strategic Action(s)	Structure Protection Operations		Comments
	Total	Number of Structures			Tactics	Water Source	
		Ignition-Resistant	Combustible/Unknown				
Pioneer Lodge – YOUTH CAMP 3221-RgeRd 63 403-638-2660	9	9	0	Prep & Defend	<ul style="list-style-type: none"> YOUTH CAMP – Evacuate early Deploy and activate Zone 1-2 sprinkler sets on structures at risk from ponds Bump & Run with apparatus for spot-fire ignitions 	<ul style="list-style-type: none"> Pond & Swimming Pool 	Special: Livestock onsite
West of Forest Protection Area Boundary	53	51	2	Prep & Defend Prep & Go	<ul style="list-style-type: none"> Scout access and fuel conditions prior to committing to Prep & Defend Bump & Run with apparatus where possible Zone 1-2 sprinkler sets on structures at risk from natural water sources and/or relay tanks 	<ul style="list-style-type: none"> Fallen Timber Cr (T27, T29) Bergen Springs Estates (T26) Sundre Hydrants Dugouts & Ponds 	
East of Forest Protection Area Boundary	36	35	1	Prep & Defend	<ul style="list-style-type: none"> Bump & Run with apparatus for spot-fire ignitions Zone 1-2 sprinkler sets on structures at risk from natural water sources and/or relay tanks 		

Sprinkler Tactics and Resources

Area	Sprinkler Tactics – refer to Sprinkler Plans	Minimum Resource Requirements			
		Pumps (Total Volume)	Supply Hose	Sprinkler Heads	Other
Pioneer Lodge	Deploy and activate Zone 1-2 sprinkler sets on structures at risk (11) from ponds	3 (1100 Lpm)	1125m	24	

Jurisdictional Boundaries

- MD Boundary
- Pre-Plan Response Zone

Values at Risk

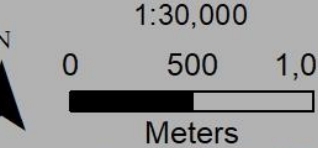
- Ignition-Resistant Roof
- Combustible/Unknown Roof
- Critical Infrastructure Site
- Special Value Site
- Hazardous Site
- Oil & Gas Site
- Campground
- Day Use
- Trailhead

Access

- All-Weather
- Emerg Access/Unimproved

Structure Protection Operations

- Staging Area
- Water Tender Refill Site
- Fire Hydrant
- Portable Pump Site
- Relay Tank Site
- Sprinkler Supply Line
- Sprinkler Line
- Safe Refuge Area



Mountain View County Bearberry Area PrePlan

Red Deer Ri

Red Deer Ri

BN4

BN3

BN1

Pioneer Lodge

Twp Rd 322

Community Cr

Fallen Timber Cr

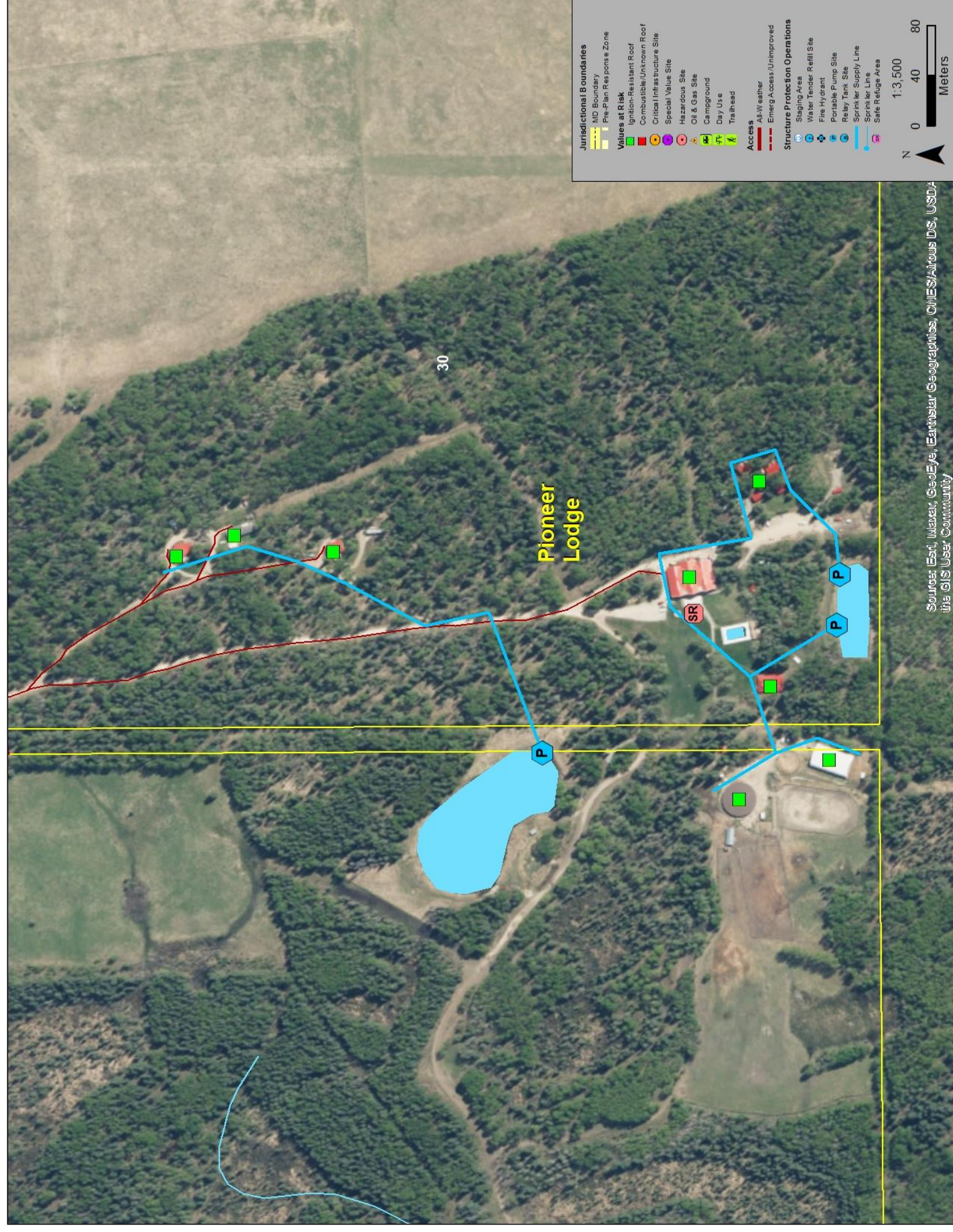
Morgensen Flats

Rosewood RV Park

Sprinkler Plan – 2021 Bergen Area – Pioneer Lodge (BN3)

Sprinkler Tactics & Resources

Area	Sprinkler Tactics	Minimum Resource Requirements			
		Pumps (Total Volume)	Supply Hose	Sprinkler Heads	Other
Pioneer Lodge	Deploy and activate Zone 1-2 sprinkler sets on structures at risk (11) from ponds	3 (1100 Lpm)	1125m	24	



Deployment Notes/Inventory:



Structure Protection Pre-Plan - 2021

Bergen Area – Zone BN4

Risk Assessment

Feature	Description
Wildfire Behaviour Potential	<ul style="list-style-type: none"> Predominantly cultivated fields, mixedwood (M-1), deciduous (D-1), and cured-grass (O-1) with scattered spruce (C-2) and pine (C-3) fuel types along creeks/streams and in west-portion of area Topography is rolling with limited influence on wildfire behaviour Predominant and strongest winds from the southwest and southeast
Structural	<ul style="list-style-type: none"> Primarily ignition-resistant roofing materials, scattered structures with combustible wood-shake or old asphalt-shingle roofing materials Many structures with combustible siding and decking materials Vegetation clearance is inadequate for many structures in west-portion of area
Infrastructure	<ul style="list-style-type: none"> ACCESS – some properties with narrow/steep/long driveways through dense coniferous or mixedwood fuels – CAUTION ADVISED FOR BUMP + RUN OPERATIONS Several properties with heavy, locked gates - Un-rated private bridges on some properties WATER SUPPLY – Dugouts and natural water sources throughout area - Pressurized fire-hydrants at Cremona and Sundre POWERLINES – Overhead distribution powerlines throughout area GAS – primarily underground natural gas – scattered above-ground propane tanks and fuel tanks at risk COMMUNICATIONS – weak to no cell coverage on west-side of area

Mutual-Aid Communications

Command	Channel Name	Receive (MHz)	Transmit (MHz)
Command	Provincial Mutual-Aid	156.855	156.855
Tactical (to be assigned at incident)			

Water Supply

Map ID	Name	Location	Type	Delivery Method
Pressurized Fire Hydrants – Village of Cremona 2-65mm AMA/BAT thread & 1-100mm Storz				
Pressurized Fire Hydrants – Town of Sundre 2-65mm AMA/BAT thread & 1-125mm Storz				
T20	Little Red Deer 310	SE4-31-04-W5M	Little Red Deer River	Draft 3-6m
T21	Fallen Timber 310	NE33-30-05-W5M	Fallen Timber Creek	Draft >6m
T22	RgeRd 60	SE12-31-06-W5M	Unnamed Creek	Draft 3-6m
T23	Fallen Timber 312	5176-TwpRd 312	Fallen Timber Creek	Draft 3-6m
T24	Little Red Deer 312	NE8-31-04-W5M	Little Red Deer River	Draft >6m
T25	Little Red Deer 320	NW33-31-04-W5M	Little Red Deer River	Draft 3-6m
T26	Bergen Springs Estates	5227-TwpRd 320	Dry Hydrant 150mm F-Threaded	Draft <3m
T27	Fallen Timber 320	SW3-32-05-W5M	Fallen Timber Cr	Portable Pump
T28	Nichi Creek	NW22-31-06-W5M	Nichi Creek	Draft 3-6m
T29	Fallen Timber 322	5346-TwpRd 322	Fallen Timber Creek	Portable Pump
T30	Westward Ho Park	324551-RgeRd 44	Little Red Deer River	Draft 3-6m

Staging Areas

Map #	Name/Address	Lat/Long	Description
S2	Bergen Gravel Pit	51° 42.350' 114° 36.569'	MVC Gravel Pit 5161 – TwpRd 320 (7.7km west of Hwy22)

Values at Risk/Structure Protection Operations

Value Name	Values at Risk			Strategic Action(s)	Structure Protection Operations		Comments
	Total	Number of Structures			Tactics	Water Source	
		Ignition-Resistant	Combustible/Unknown				
Rosewood RV Park 32322-Hwy 760	2	2	0	Prep & Defend	<ul style="list-style-type: none"> Bump & Run with apparatus for spot-fire ignitions 	<ul style="list-style-type: none"> Red Deer River Sundre Hydrants 	
Doyce Drive Subdivision 32342-32376 Hwy 760	13	13	0	Prep & Go	<ul style="list-style-type: none"> Deploy & activate Zone 1-2 sprinkler sets on structures at risk from Red Deer River and/or relay tanks 	<ul style="list-style-type: none"> Red Deer River Sundre Hydrants 	
Rainbow Ridge RV Park 32280-RgeRd 45	6	6	0	Prep & Defend	<ul style="list-style-type: none"> Bump & Run with apparatus for spot-fire ignitions 	<ul style="list-style-type: none"> Pond 	
Westward Ho & Westward Ho Park RgeRd 44/Hwy 27	21	21	0	Prep & Defend	<ul style="list-style-type: none"> Bump & Run with apparatus for spot-fire ignitions 	<ul style="list-style-type: none"> Little Red Deer River (T30) 	

Sprinkler Tactics and Resources

Area	Sprinkler Tactics – refer to Sprinkler Plans	Minimum Resource Requirements			
		Pumps (Total Volume)	Supply Hose	Sprinkler Heads	Other
Doyce Drive Subdivision/Rosewood RV Park	Deploy & activate Zone 1-2 sprinkler sets on structures at risk (15) from Red Deer River and/or relay tanks	4 (2025 Lpm)	1275m	45	4 – Upright relay tanks (63,000 L each)

Jurisdictional Boundaries

- MD Boundary
- Pre-Plan Response Zone

Values at Risk

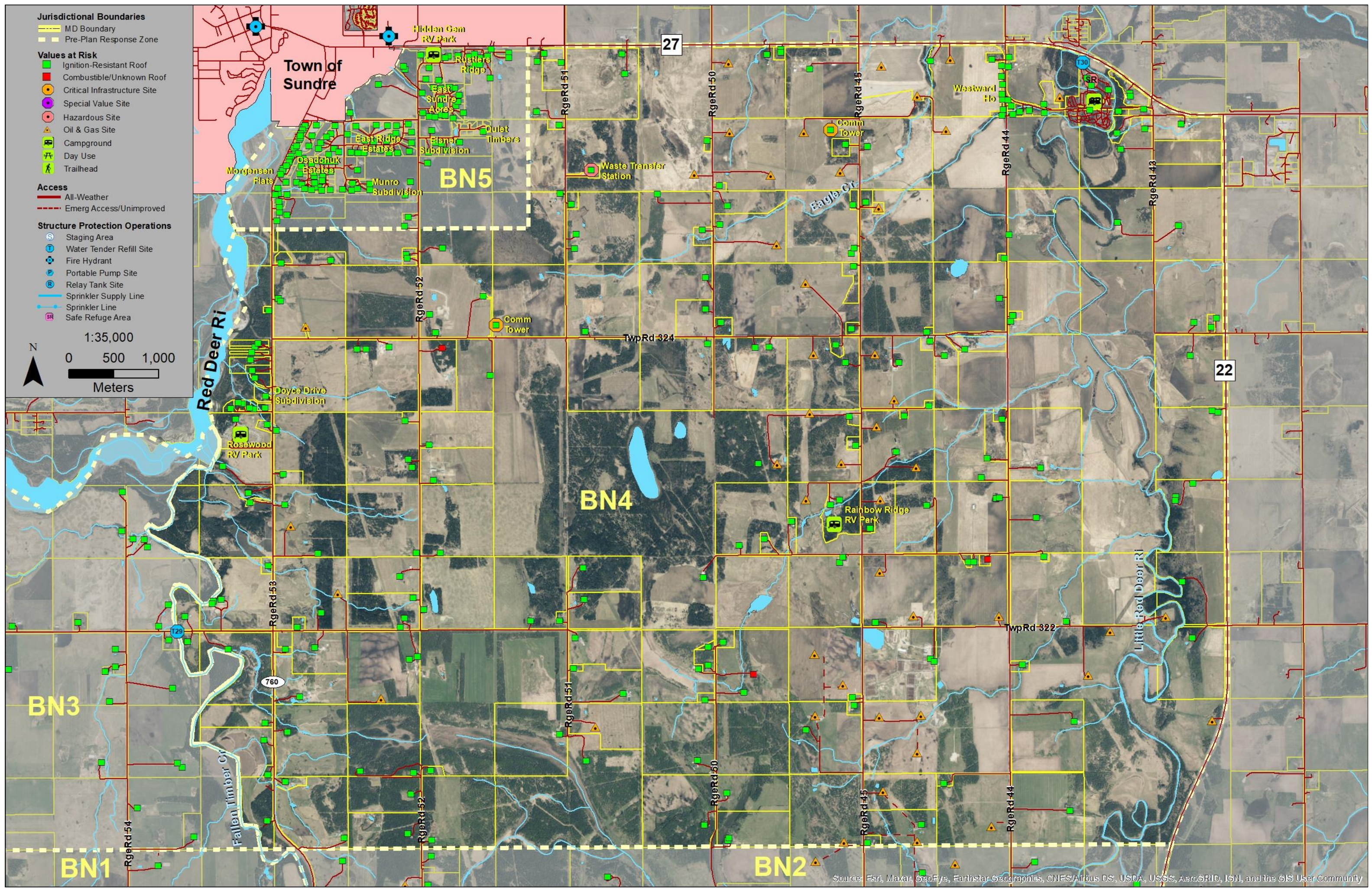
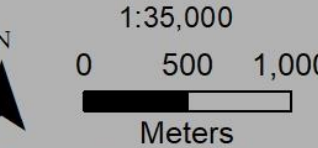
- Ignition-Resistant Roof
- Combustible/Unknown Roof
- Critical Infrastructure Site
- Special Value Site
- Hazardous Site
- Oil & Gas Site
- Campground
- Day Use
- Trailhead

Access

- All-Weather
- Emerg Access/Unimproved

Structure Protection Operations

- Staging Area
- Water Tender Refill Site
- Fire Hydrant
- Portable Pump Site
- Relay Tank Site
- Sprinkler Supply Line
- Sprinkler Line
- Safe Refuge Area



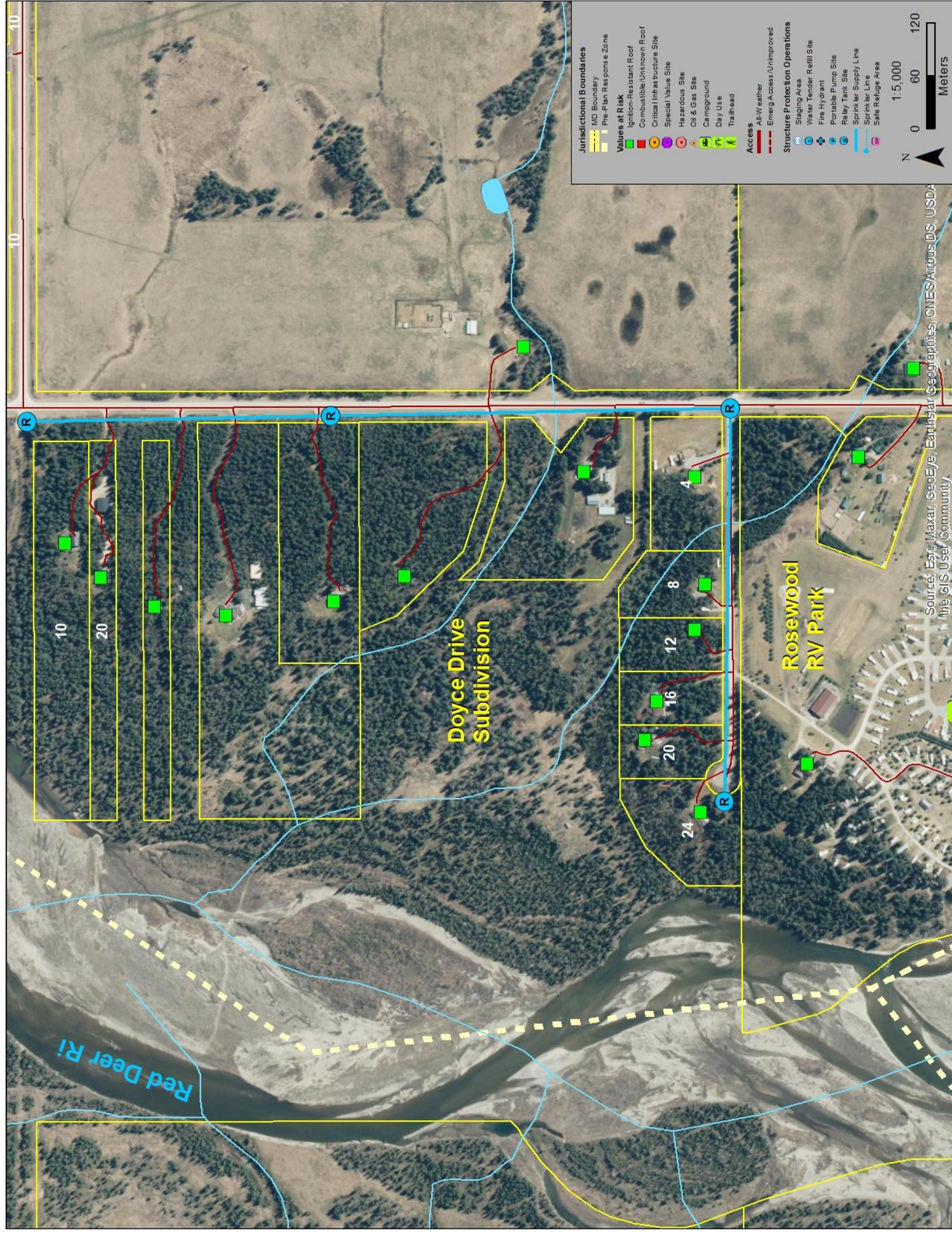
Source: Esri, Maxar, GeoEye, Earthstar Geographics, CNES/Airbus DS, USDA, USGS, AeroGRID, IGN, and the GIS User Community

Sprinkler Plan – 2021

Bergen Area – Doyce Drive Subdivision/Rosewood RV Park (BN4)

Sprinkler Tactics & Resources

Area	Sprinkler Tactics	Minimum Resource Requirements		
		Pumps (Total Volume)	Supply Hose	Sprinkler Heads
Doyce Drive Subdivision/ Rosewood RV Park	Deploy & activate Zone 1-2 sprinkler sets on structures at risk (15) from Red Deer River and/or relay tanks	4 (2025 Lpm)	1275m	45
				4 – Upright relay tanks (63,000 L each)



Deployment Notes/Inventory:



Structure Protection Pre-Plan - 2021

Bergen Area – Zone BN5

Risk Assessment

Feature	Description
Wildfire Behaviour Potential	<ul style="list-style-type: none"> Predominantly cultivated fields, mixedwood (M-1), deciduous (D-1), and cured-grass (O-1) with scattered spruce (C-2) and pine (C-3) fuel types along creeks/streams and in west-portion of area Topography is rolling with limited influence on wildfire behaviour Predominant and strongest winds from the southwest and southeast
Structural	<ul style="list-style-type: none"> Primarily ignition-resistant roofing materials, scattered structures with combustible wood-shake or old asphalt-shingle roofing materials Many structures with combustible siding and decking materials Vegetation clearance is inadequate for many structures in west-portion of area
Infrastructure	<ul style="list-style-type: none"> ACCESS – some properties with narrow/steep/long driveways through dense coniferous or mixedwood fuels – CAUTION ADVISED FOR BUMP + RUN OPERATIONS Several properties with heavy, locked gates - Un-rated private bridges on some properties WATER SUPPLY – Dugouts and natural water sources throughout area - Pressurized fire-hydrants at Cremona and Sundre POWERLINES – Overhead distribution powerlines throughout area GAS – primarily underground natural gas – scattered above-ground propane tanks and fuel tanks at risk COMMUNICATIONS – weak to no cell coverage on west-side of area

Mutual-Aid Communications

Command	Channel Name	Receive (MHz)	Transmit (MHz)
Command	Provincial Mutual-Aid	156.855	156.855
Tactical (to be assigned at incident)			

Water Supply

Map ID	Name	Location	Type	Delivery Method
Pressurized Fire Hydrants – Village of Cremona 2-65mm AMA/BAT thread & 1-100mm Storz				
Pressurized Fire Hydrants – Town of Sundre 2-65mm AMA/BAT thread & 1-125mm Storz				
T20	Little Red Deer 310	SE4-31-04-W5M	Little Red Deer River	Draft 3-6m
T21	Fallen Timber 310	NE33-30-05-W5M	Fallen Timber Creek	Draft >6m
T22	RgeRd 60	SE12-31-06-W5M	Unnamed Creek	Draft 3-6m
T23	Fallen Timber 312	5176-TwpRd 312	Fallen Timber Creek	Draft 3-6m
T24	Little Red Deer 312	NE8-31-04-W5M	Little Red Deer River	Draft >6m
T25	Little Red Deer 320	NW33-31-04-W5M	Little Red Deer River	Draft 3-6m
T26	Bergen Springs Estates	5227-TwpRd 320	Dry Hydrant 150mm F-Threaded	Draft <3m
T27	Fallen Timber 320	SW3-32-05-W5M	Fallen Timber Cr	Portable Pump
T28	Nichi Creek	NW22-31-06-W5M	Nichi Creek	Draft 3-6m
T29	Fallen Timber 322	5346-TwpRd 322	Fallen Timber Creek	Portable Pump
T30	Westward Ho Park	324551-RgeRd 44	Little Red Deer River	Draft 3-6m

Staging Areas

Map #	Name/Address	Lat/Long	Description
S2	Bergen Gravel Pit	51° 42.350' 114° 36.569'	MVC Gravel Pit 5161 – TwpRd 320 (7.7km west of Hwy22)

Values at Risk/Structure Protection Operations

Values at Risk				Structure Protection Operations			Comments
Value Name	Total	Number of Structures		Strategic Action(s)	Tactics	Water Source	
		Ignition-Resistant	Combustible/Unknown				
RgeRd 52 West				Prep & Defend	<ul style="list-style-type: none"> Deploy & activate Zone 1-2 sprinkler sets on structures at risk from ponds/dugouts and or relay tanks Bump & Run with apparatus for spot-fire ignitions 	<ul style="list-style-type: none"> Sundre Hydrants Ponds/Dugouts 	Hazardous: Waste Transfer Station to east of BN5 area
Morgensen Flats	33	32	1				
Osadchuk Estates	32	32	0				
East Ridge Estates/Munro Subdivision	27	27	0				
RgeRd 52 Rural Properties	7	7	7				
RgeRd 52 East				Prep & Defend	<ul style="list-style-type: none"> Deploy & activate Zone 1-2 sprinkler sets on structures at risk from ponds/dugouts and/or relay tanks Bump & Run with apparatus for spot-fire ignitions 	<ul style="list-style-type: none"> Sundre Hydrants Ponds/Dugouts 	
Rustlers Ridge/Hidden Gem RV Park	18	18	0				
East Sundre Acres	17	17	0				
Quiet Timbers/Elsner Subdivisions	8	8	0				

Sprinkler Tactics and Resources

Area	Sprinkler Tactics – refer to Sprinkler Plans	Minimum Resource Requirements			
		Pumps (Total Volume)	Supply Hose	Sprinkler Heads	Other
RgeRd 52 West	<ul style="list-style-type: none"> Deploy & activate Zone 1-2 sprinkler sets on structures at risk (82) from ponds/dugouts and or relay tanks 	20 (11,250 Lpm)	4800m	250	6 – Upright relay tanks (63,000 L each) 11 – Relay tanks (9,500 L each)
RgeRd 52 East	<ul style="list-style-type: none"> Deploy & activate Zone 1-2 sprinkler sets on structures at risk (37) from ponds/dugouts and or relay tanks 	6 (5000 Lpm)	2175m	110	

Jurisdictional Boundaries

- MD Boundary
- Pre-Plan Response Zone

Values at Risk

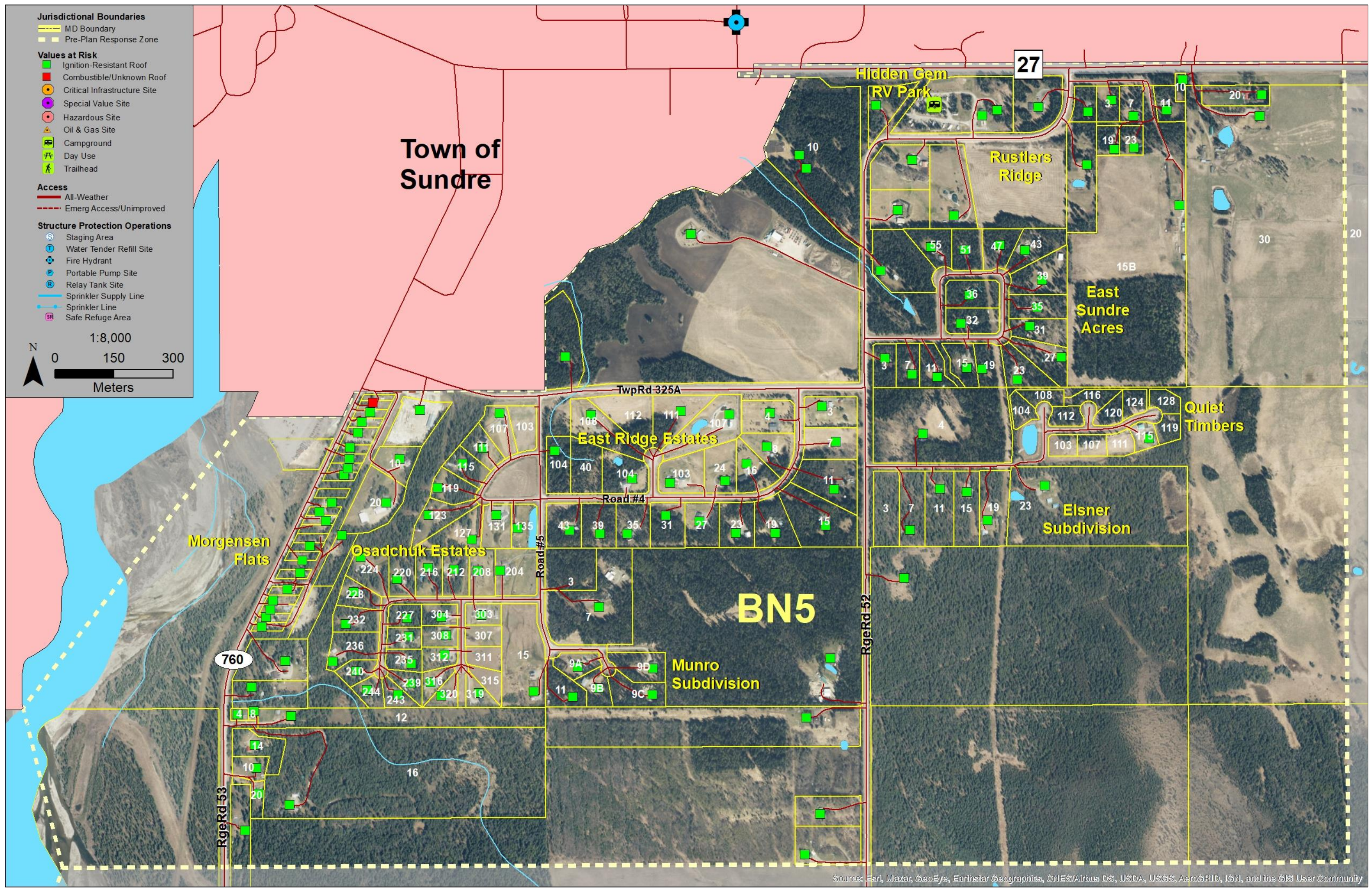
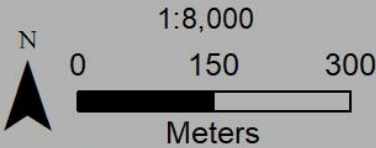
- Ignition-Resistant Roof
- Combustible/Unknown Roof
- Critical Infrastructure Site
- Special Value Site
- Hazardous Site
- Oil & Gas Site
- Campground
- Day Use
- Trailhead

Access

- All-Weather
- Emerg Access/Unimproved

Structure Protection Operations

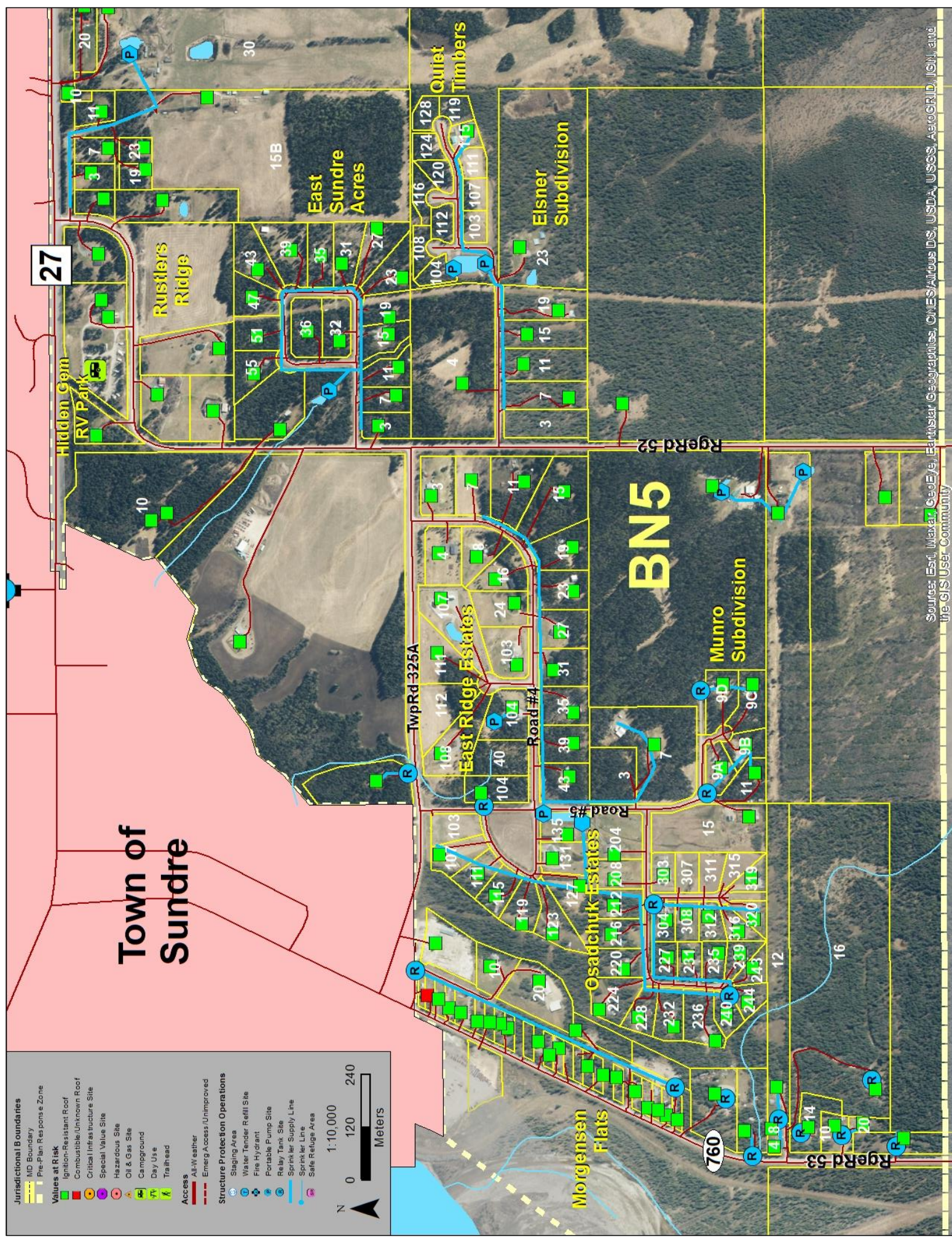
- Staging Area
- Water Tender Refill Site
- Fire Hydrant
- Portable Pump Site
- Relay Tank Site
- Sprinkler Supply Line
- Sprinkler Line
- Safe Refuge Area



Sprinkler Plan – 2021 Bergen Area – Southeast Sundre Subdivisions (BN5)

Sprinkler Tactics & Resources

Area	Sprinkler Tactics	Minimum Resource Requirements			
		Pumps (Total Volume)	Supply Hose	Sprinkler Heads	Other
RgeRd 52 West	Deploy & activate Zone 1-2 sprinkler sets on structures at risk (82) from ponds/dugouts and or relay tanks	20 (11,250 Lpm)	4800m	250	6 – Upright relay tanks (63,000 L each) 11 – Relay tanks (9,500 L each)
RgeRd 52 East	Deploy & activate Zone 1-2 sprinkler sets on structures at risk (37) from ponds/dugouts and or relay tanks	6 (5000 Lpm)	2175m	110	



Deployment Notes/Inventory:

