

BYLAW NO. LU 11/23

Being a Bylaw of Mountain View County in the Province of Alberta to amend Land Use Bylaw No. 21/21 affecting SE 28-33-6-5 and Plan 0311744 Block 1 Lot 1 pursuant to the Municipal Government Act.

The Council of Mountain View County, duly assembled, enacts that Bylaw No. 21/21 be amended as follows:

To redesignate from Agricultural District (A) to Residential Farmstead District (R-F) an approximate ten point three nine (10.39) acres (4.20 hectares); and to redesignate from Agricultural District (A) to Agricultural (2) District (A(2)) an approximate four point six four (4.64) acres (1.88 hectares) within the Southeast (SE) Quarter Section twenty-eight (28), Township thirty-three (33), Range six (6), West of the fifth (5th) Meridian; and to redesignate from Agricultural (2) District (A(2)) to Agricultural District (A) an approximate thirty-nine point nine two (39.92) acres (16.15 hectares) in Plan 0311744 Block 1 Lot 1; as outlined on Schedule "A" attached hereto.

Received first reading September 06, 2023,

Received second reading _____.

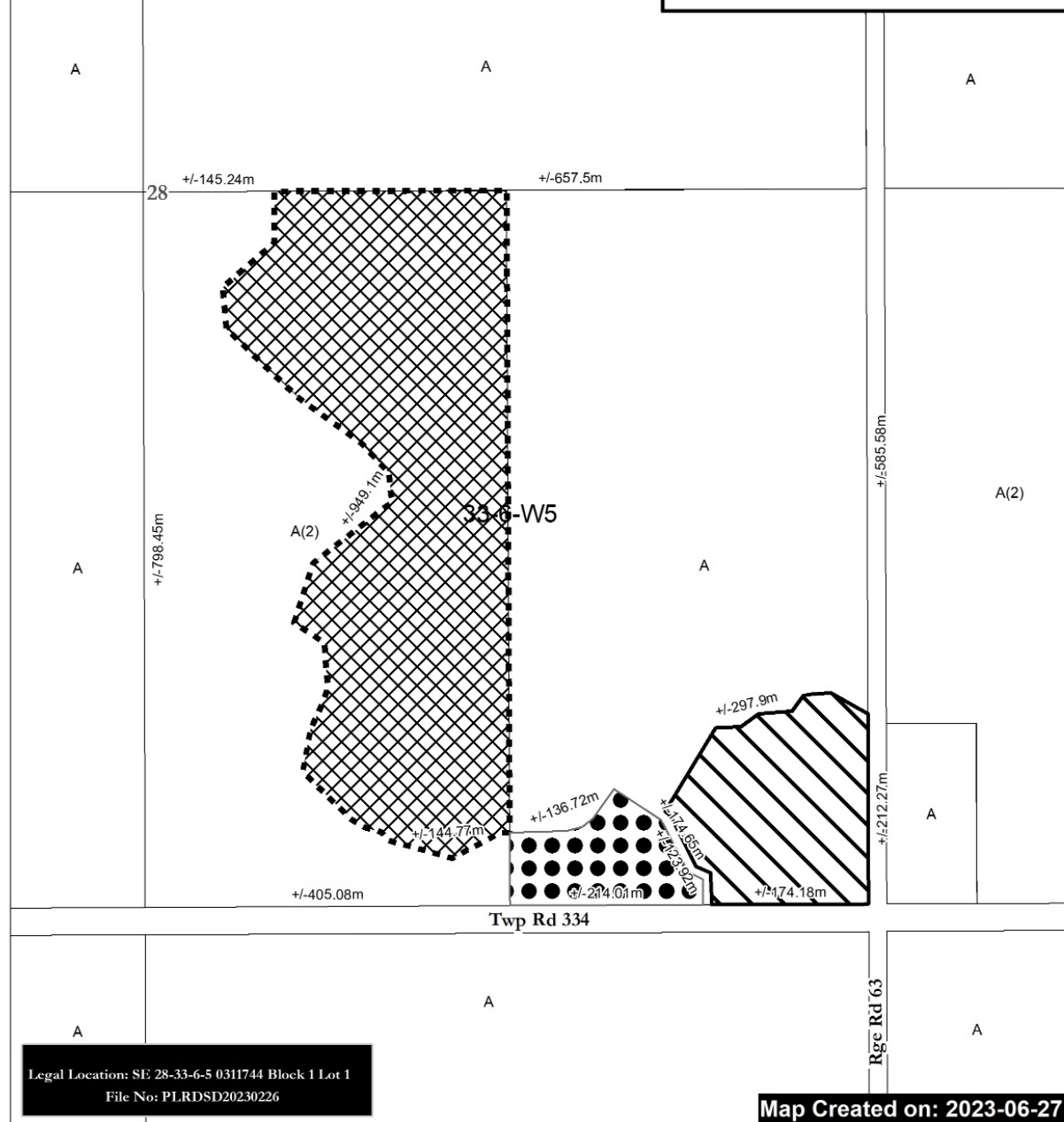
Received third reading _____.

Reeve

Chief Administrative Officer

Date of Signing

Schedule A Bylaw No. LU 11/23



From A to R-F
(+/-) 10.39 ac (4.20 Ha)

From A(2) to A
(+/-) 39.92ac (16.15 Ha)

From (A) to A(2)
(+/-) 4.64 ac (1.88 Ha)



Mountain View
C O U N T Y

A = Agricultural District
A(2) = Agricultural (2) District
R-CR = Country Residential District
R-CR1 = Country Residential (1) District
RF = Residential Farmstead District
C-LC = Local Commercial District
I-BP = Business Park District
I-HI = Heavy Industrial District

P-PC = Parks and Conservation District
P-PR = Parks and Recreation District
P-PCR = Parks and Comprehensive Recreational District
S-IEC = Institutional, Educational and Cultural District
S-AP = Airport District
DC = Direct Control
AEP = Aggregate Extraction / Processing District



0 25 50 100 Meters

Scale: 1:6,000

Mountain View County

NAD_1983_CSRS_BTM_AEP_Forest
Projection: Transverse_Mercator