



# Mountain View COUNTY

## Location, Land Use, Ownership & Circulation

### Legend

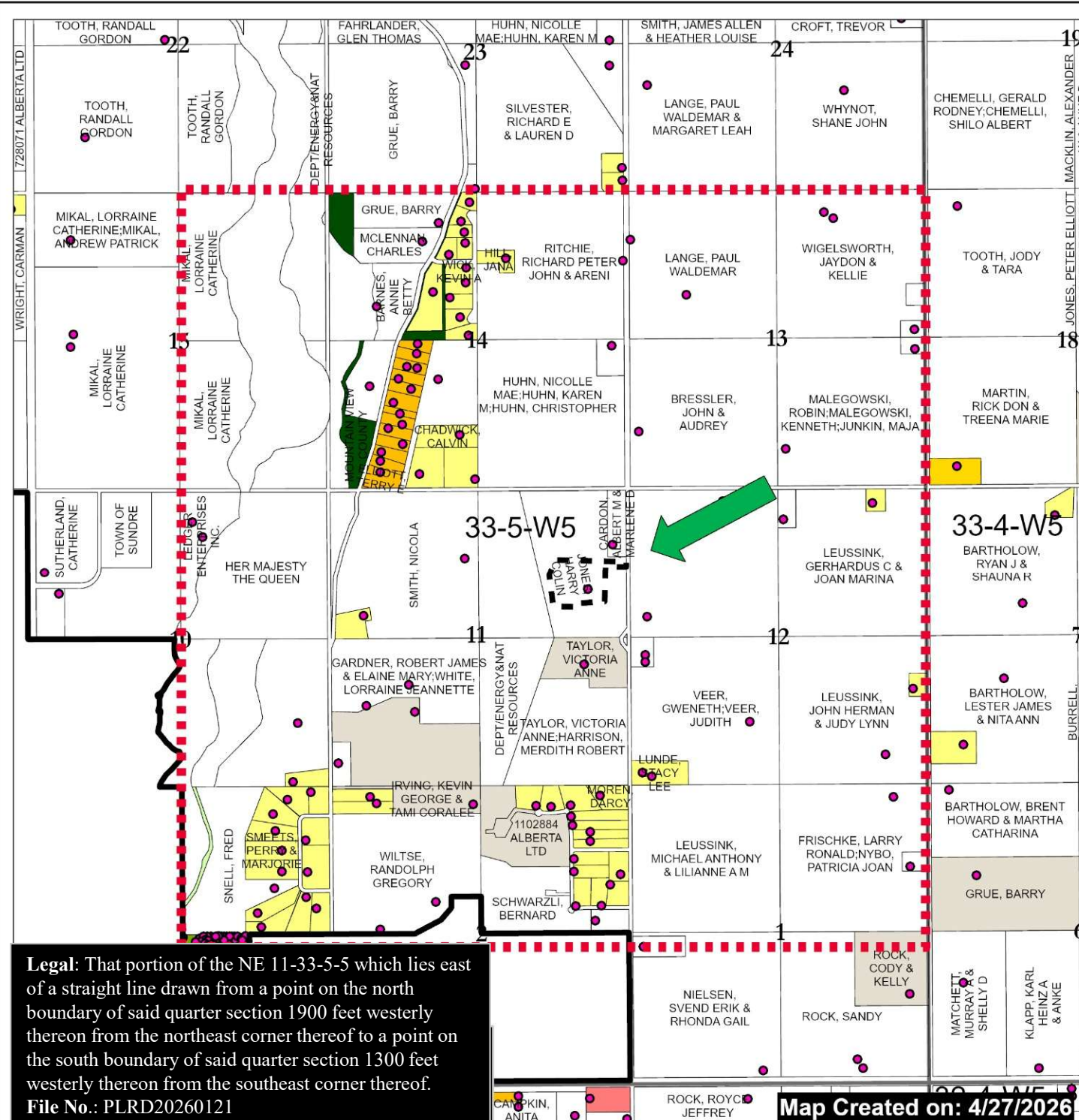
- Rural Address
- Proposed Redesignation
- Subdivision Boundary
- Land Use Zoning**
- Agricultural District (A)
- Agricultural (2) District (A(2))
- Country Residential District (R-CR)
- Country Residential (1) District (R-CR1)
- Residential Farmstead District (R-F)
- Local Commercial District (C-LC)
- Business Park District (I-BP)
- Heavy Industrial District (I-HI)
- Aggregate Extraction/Processing District (AEP)
- Parks and Conservation District (P-PC)
- Parks and Recreation District (P-PR)
- Parks and Comprehensive Recreational District (P-PCR)
- Institutional, Educational and Cultural District (S-IEC)
- Airport District (S-AP)
- Direct Control
- Subject Land
- Landowners Circulated



0 250 500 1,000 1,500 Meters

Scale: 1:30,000

Mountain View County  
NAD\_1983\_CSRS\_10TM\_AEP\_Forest  
Projection: Transverse\_Mercator



**Legal:** That portion of the NE 11-33-5-5 which lies east of a straight line drawn from a point on the north boundary of said quarter section 1900 feet westerly thereon from the northeast corner thereof to a point on the south boundary of said quarter section 1300 feet westerly thereon from the southeast corner thereof.  
**File No.:** PLRD20260121

Map Created on: 4/27/2026