

BYLAW NO. LU 08/26

Being a Bylaw of Mountain View County in the Province of Alberta to amend Land Use Bylaw No. 10/24 affecting SW 16-31-28-4 pursuant to the Municipal Government Act.

The Council of Mountain View County, duly assembled, enacts that Bylaw No. 10/24 be amended as follows:

To redesignate from Agricultural District (A) to Residential Farmstead District (R-F) an approximate seven point two five (7.25) acres (2.93 hectares) in the Southwest (SW) Quarter of Section sixteen (16), Township thirty-one (31), Range twenty-eight (28), West of the fourth (4th) Meridian, as outlined on Schedule "A" attached hereto.

Received first reading April 22, 2026,

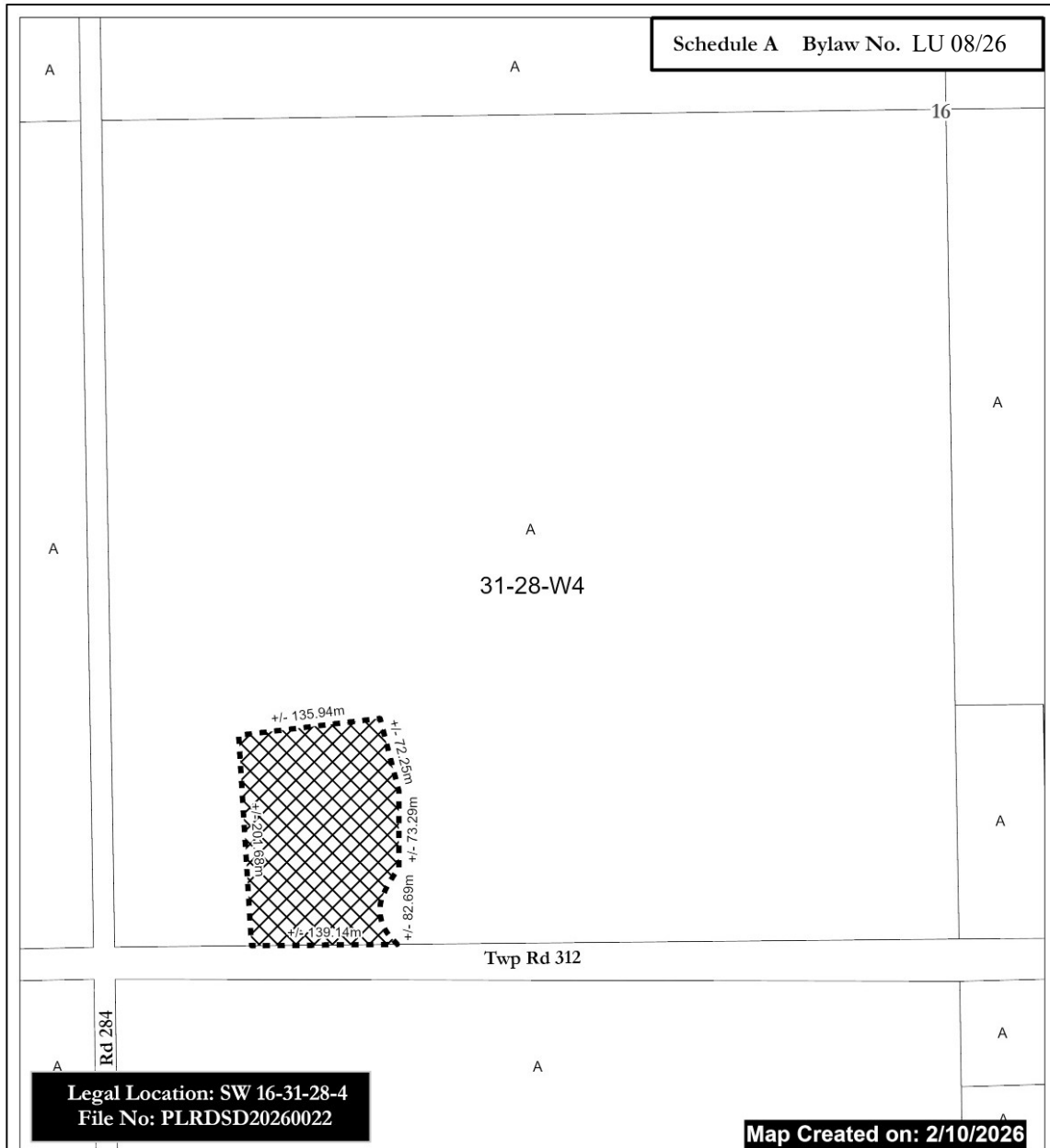
Received second reading _____,


Received third reading _____.

Reeve

Chief Administrative Officer

Date of Signing



 From A to R-F
(+/-) 7.25 ac (2.93 Ha)



- A = Agricultural District
- A(2) = Agricultural (2) District
- R-CR = Country Residential District
- R-CR1 = Country Residential (1) District
- RF = Residential Farmstead District
- C-LC = Local Commercial District
- I-BP = Business Park District
- I-HI = Heavy Industrial District
- P-PC = Parks and Conservation District

- P-PR = Parks and Recreation District
- P-PCR = Parks and Comprehensive Recreational District
- S-IEC = Institutional, Educational and Cultural District
- S-AP = Airport District
- DC = Direct Control
- AEF = Aggregate Extraction / Processing District



0 25 50 Meters

Scale: 1:5,000

Mountain View County

NAD_1983_CSRS_10TM_AEP_Forest
Projection: Transverse_Mercator