

BYLAW NO. LU 29/25

Being a Bylaw of Mountain View County in the Province of Alberta to amend Land Use Bylaw No. 10/24 affecting NE 6-32-5-5 pursuant to the Municipal Government Act.

The Council of Mountain View County, duly assembled, enacts that Bylaw No. 10/24 be amended as follows:

To redesignate from Agricultural District (A) to Country Residential District (R-CR) an approximate three point three eight (3.38) acres (1.37 hectares) in the Northeast (NE) Quarter of Section six (6), Township thirty-two (32), Range five (5), West of the fifth (5th) Meridian, as outlined on Schedule "A" attached hereto.

Received first reading July 09, 2025,

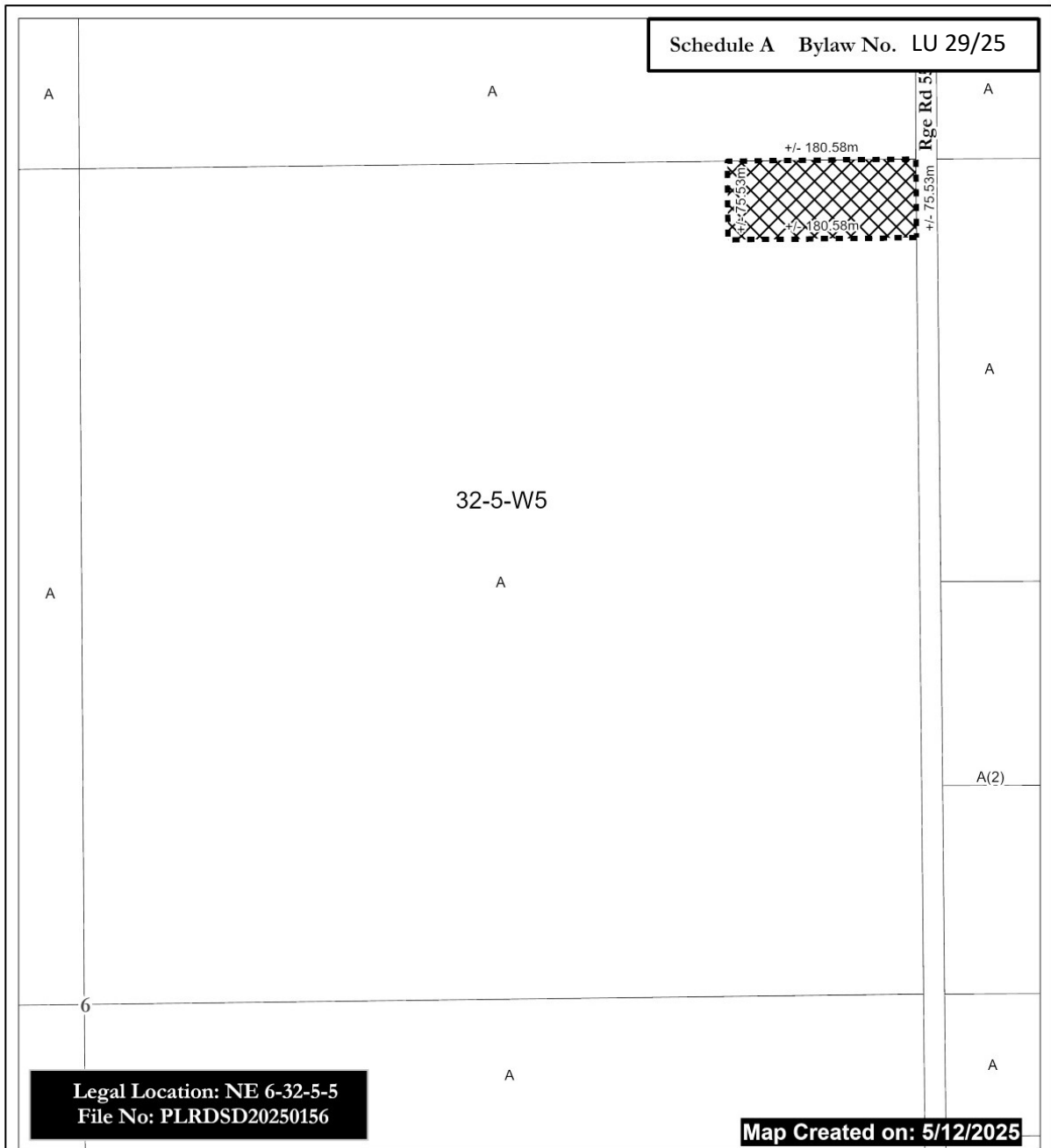
Received second reading _____,

Received third reading _____.

Reeve

Chief Administrative Officer

Date of Signing



From A to R-CR
(+/-) 3.38 ac (1.37 Ha)



A = Agricultural District
A(2) = Agricultural (2) District
R-CR = Country Residential District
R-CR1 = Country Residential (1) District
RF = Residential Farmstead District
C-LC = Local Commercial District
I-BP = Business Park District
I-HI = Heavy Industrial District
P-PC = Parks and Conservation District

P-PR = Parks and Recreation District
P-PCR = Parks and Comprehensive
Recreational District
S-IEC = Institutional, Educational and
Cultural District
S-AP = Airport District
DC = Direct Control
AEP = Aggregate Extraction /
Processing District



0 25 50 Meters

Scale: 1:5,000

Mountain View County

NAD_1983_CSRS_10TM_AFP_Forest
Projection: Transverse_Mercator