

BYLAW NO. LU 17/22

Being a Bylaw of Mountain View County in the Province of Alberta to amend Land Use Bylaw No. 21/21 affecting NW 15-30-4-5 pursuant to the Municipal Government Act.

The Council of Mountain View County, duly assembled, enacts that Bylaw No. 21/21 be amended as follows:

To redesignate from Agricultural District (A) to Residential Farmstead District (R-F) an approximate eight point one eight (8.18) acres (3.31 hectares) in the Northwest (NW) Quarter of Section fifteen (15), Township thirty (30), Range four (4), West of the fifth (5th) Meridian, as outlined on Schedule "A" attached hereto.

Received first reading June 22, 2022,

Received second reading _____,

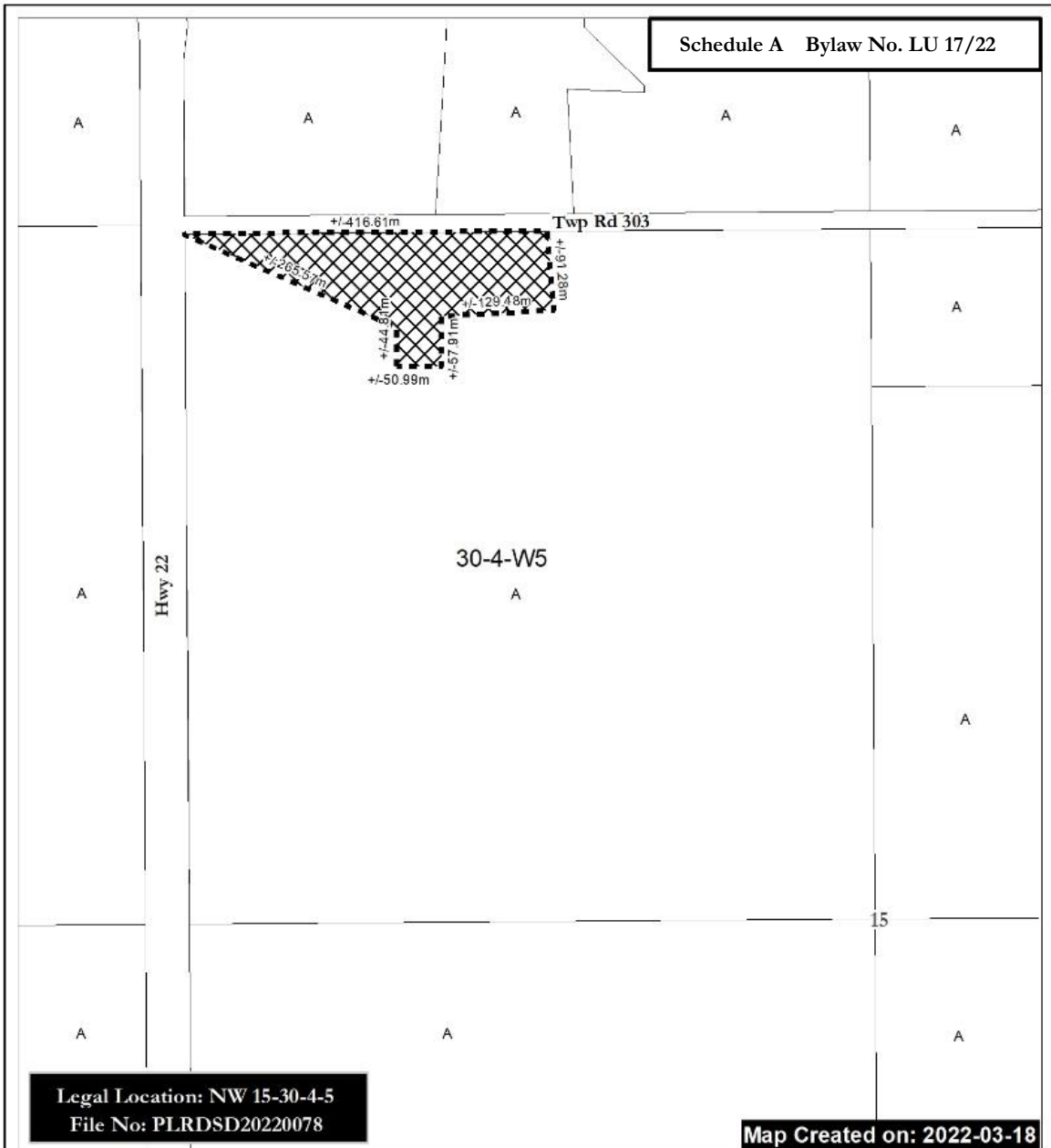
Received third reading _____,

Reeve

Chief Administrative Officer

Date of Signing

Schedule A Bylaw No. LU 17/22



From A to R-F
(+/-) 8.18 ac (3.31 Ha)

A = Agricultural District
A(2) = Agricultural (2) District
R-CR = Country Residential District
R-CR1 = Country Residential (1) District
RF = Residential Farmstead District
C-LC = Local Commercial District
I-BP = Business Park District
I-HI = Heavy Industrial District

P-PC = Parks and Conservation District
P-PR = Parks and Recreation District
P-PCR = Parks and Comprehensive Recreational District
S-IEC = Institutional, Educational and Cultural District
S-AP = Airport District
DC = Direct Control
AEP = Aggregate Extraction / Processing District



0 25 50 100 Meters

Scale: 1:6,000

Mountain View County

NAD 1983 CNRS 30TM, 41P, 100m
Projection: Transverse_Mercator