

BYLAW NO. LU 14/26

Being a Bylaw of Mountain View County in the Province of Alberta to amend Land Use Bylaw No. 10/24 affecting SW 22-31-2-5 and SE 22-31-2-5 pursuant to the Municipal Government Act.

The Council of Mountain View County, duly assembled, enacts that Bylaw No. 10/24 be amended as follows:

To redesignate from Agricultural District (A) to Residential Farmstead District (R-F) an approximate six point eight six (6.86) acres (2.78 hectares) within the Southwest (SW) Quarter of Section twenty-two (22), Township thirty-one (31), Range two (2), West of the fifth (5th) Meridian, and to redesignate from Agricultural District (A) to Residential Farmstead District (R-F) an approximate four point one two (4.12) acres (1.67 hectares) within the Southeast (SE) Quarter of Section twenty-two (22), Township thirty-one (31), Range two (2), West of the fifth (5th) Meridian, as outlined on Schedule "A" attached hereto.

Received first reading May 20, 2026,

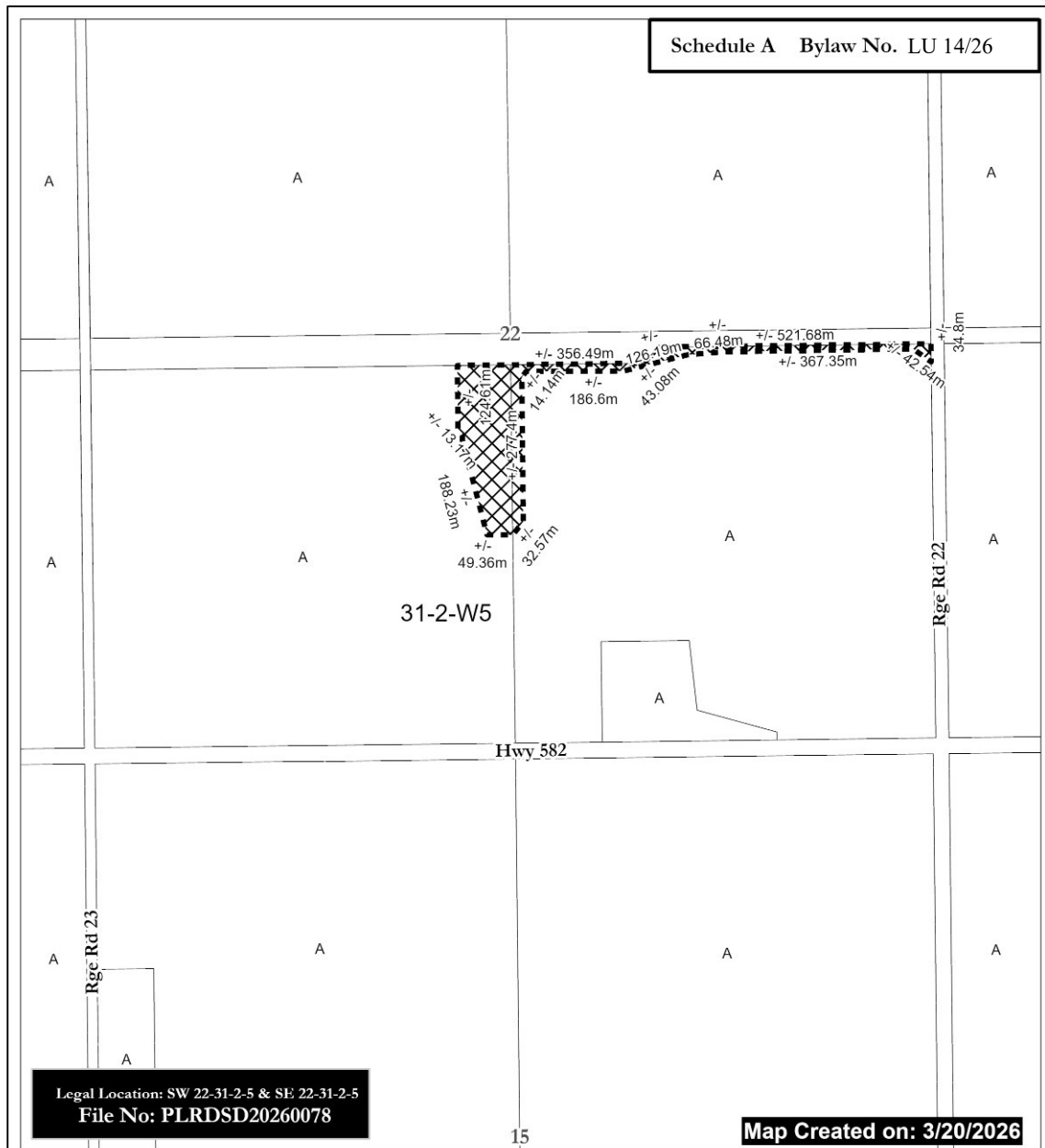
Received second reading _____,


Received third reading _____.

Reeve

Chief Administrative Officer

Date of Signing



 From A to R-F
(+/-) 10.98 ac (4.44 Ha)



- A = Agricultural District
- A(2) = Agricultural (2) District
- R-CR = Country Residential District
- R-CR1 = Country Residential (1) District
- RF = Residential Farmstead District
- C-LC = Local Commercial District
- I-BP = Business Park District
- I-HI = Heavy Industrial District
- P-PC = Parks and Conservation District

- P-PR = Parks and Recreation District
- P-PCR = Parks and Comprehensive Recreational District
- S-IIC = Institutional, Educational and Cultural District
- S-AP = Airport District
- DC = Direct Control
- AEP = Aggregate Extraction / Processing District

