

BYLAW NO. LU 15/26

Being a Bylaw of Mountain View County in the Province of Alberta to amend Land Use Bylaw No. 10/24 affecting NW 3-34-4-5 pursuant to the Municipal Government Act.

The Council of Mountain View County, duly assembled, enacts that Bylaw No. 10/24 be amended as follows:

To redesignate from Agricultural District (A) to Country Residential District (R-CR) an approximate four point five two (4.52) acres (1.83 hectares) in the Northwest (NW) Quarter of Section three (3), Township thirty-four (34), Range four (4), West of the fifth (5th) Meridian, as outlined on Schedule "A" attached hereto.

Received first reading May 20, 2026,

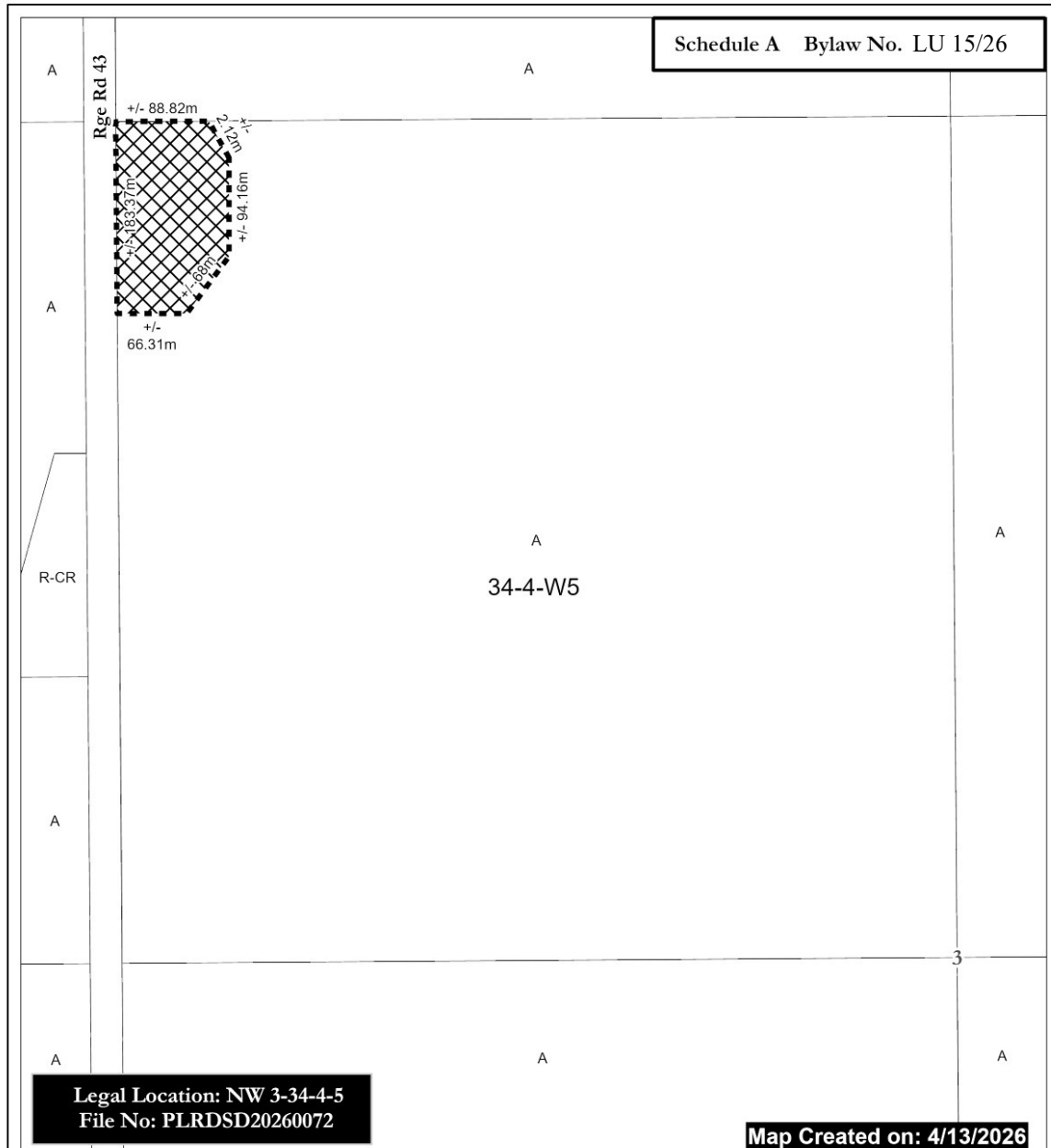
Received second reading _____,


Received third reading _____.

Reeve

Chief Administrative Officer

Date of Signing

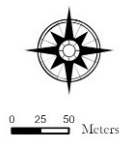


 From A to R-CR
(+/-) 4.52 ac (1.83 Ha)



- A = Agricultural District
- A(2) = Agricultural (2) District
- R-CR = Country Residential District
- R-CR1 = Country Residential (1) District
- RF = Residential Farmstead District
- C-LC = Local Commercial District
- I-BP = Business Park District
- I-HI = Heavy Industrial District
- P-PC = Parks and Conservation District

- P-PR = Parks and Recreation District
- P-PCR = Parks and Comprehensive Recreational District
- S-IEC = Institutional, Educational and Cultural District
- S-AP = Airport District
- DC = Direct Control
- AEP = Aggregate Extraction / Processing District



Scale: 1:5,000
Mountain View County
NAD_1983_CSRS_10TM_AEP_Forest
Projection: Transverse_Mercator