

BYLAW NO. LU 05/25

Being a Bylaw of Mountain View County in the Province of Alberta to amend Land Use Bylaw No. 10/24 affecting NE 18-32-4-5 and Plan 1712325 Block 1 Lot 1 pursuant to the Municipal Government Act.

The Council of Mountain View County, duly assembled, enacts that Bylaw No. 10/24 be amended as follows:

To redesignate from Agricultural District (A) to Agricultural (2) District (A(2)) an approximate forty point seven three (40.73) acres (16.48 hectares) in the Northeast (NE) Quarter of Section eighteen (18), Township thirty-two (32), Range four (4), West of the Fifth (5th) Meridian; and to redesignate Parks and Recreation District (P-PR) to Agricultural (2) District (A(2)) an approximate zero point six one (0.61) acres (0.25 hectares) in Plan 1712325 Block 1 Lot 1, as outlined on Schedule "A" attached hereto.

Received first reading February 12, 2025,

Received second reading _____,

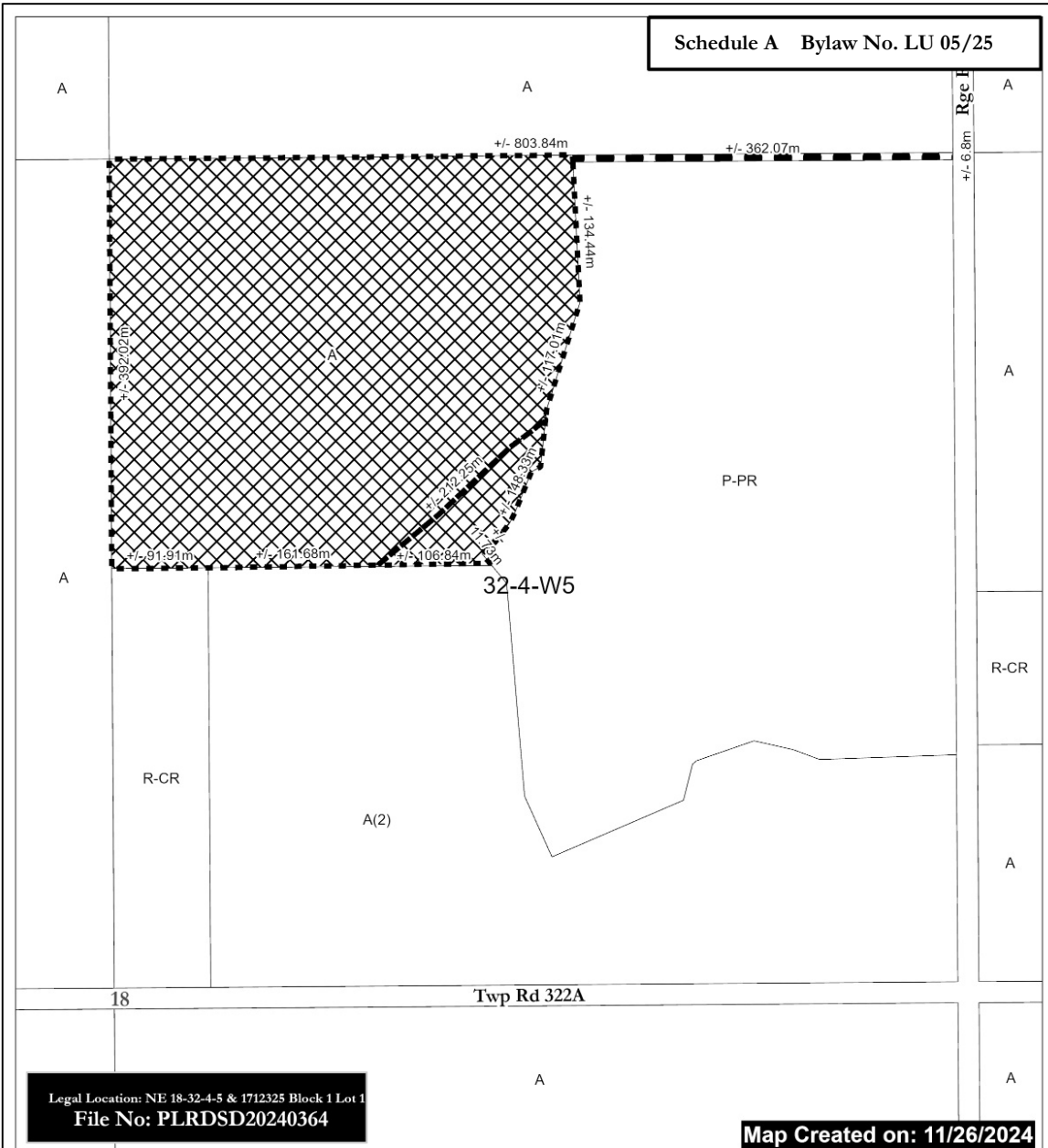
Received third reading _____.

Reeve

Chief Administrative Officer


Date of Signing


Schedule A Bylaw No. LU 05/25



Legal Location: NE 18-32-4-5 & 1712325 Block 1 Lot 1
 File No: PLRDSD20240364

Map Created on: 11/26/2024

 From A to A(2)
 (+/-) 40.73 ac (16.48 Ha)

 From P-PR to A(2)
 (+/-) 0.61 ac (0.25 Ha)



- A = Agricultural District
- A(2) = Agricultural (2) District
- R-CR = Country Residential District
- R-CR1 = Country Residential (1) District
- RF = Residential Farmstead District
- C-LC = Local Commercial District
- I-BP = Business Park District
- I-HI = Heavy Industrial District
- P-PC = Parks and Conservation District

- P-PR = Parks and Recreation District
- P-PCR = Parks and Comprehensive Recreational District
- S-IEC = Institutional, Educational and Cultural District
- S-AP = Airport District
- DC = Direct Control
- AEP = Aggregate Extraction / Processing District



0 25 50 Meters

Scale: 1:5,000

Mountain View County
 NAD_1983_CSRS_10TM_AFP_Forest
 Projection: Transverse_Mercator