



Mountain View COUNTY

Location, Land Use, Ownership & Circulation Legend

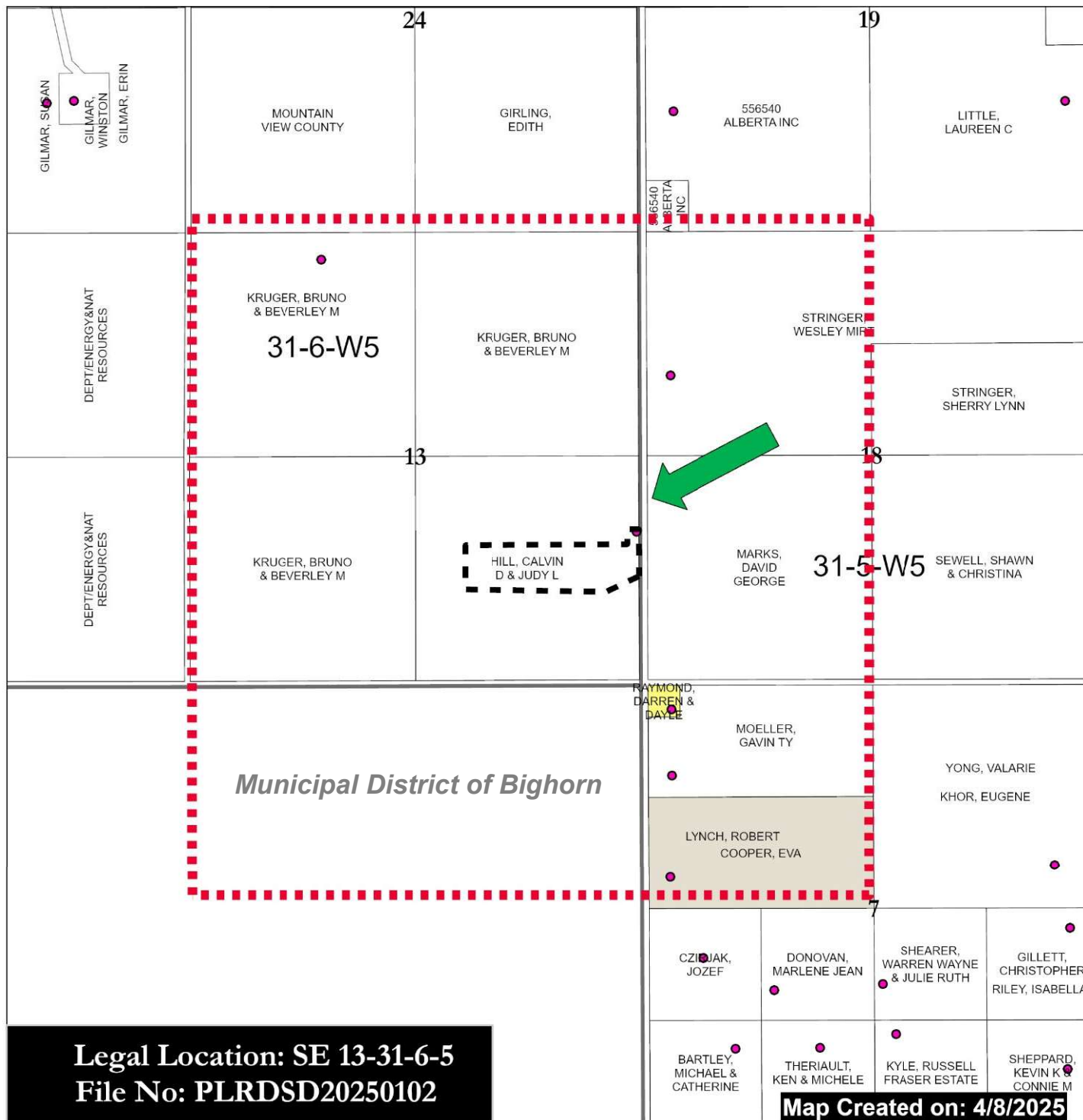
- Rural Address
- Proposed Redesignation
- Subdivision Boundary
- Land Use Zoning**
 - Agricultural District (A)
 - Agricultural (2) District (A(2))
 - Country Residential District (R-CR)
 - Country Residential (1) District (R-CR1)
 - Residential Farmstead District (R-F)
 - Local Commercial District (C-LC)
 - Business Park District (I-BP)
 - Heavy Industrial District (I-HI)
 - Aggregate Extraction/Processing District (AEP)
 - Parks and Conservation District (P-PC)
 - Parks and Recreation District (P-PR)
 - Parks and Comprehensive Recreational District (P-PCR)
 - Institutional, Educational and Cultural District (S-IEC)
 - Airport District (S-AP)
 - Direct Control
- Subject Land
- Landowners Circulated



0 250 500 1,000 Meters

Scale: 1:20,000

Mountain View County
NAD_1983_CSRS_10TM_AEP_Forest
Projection: Transverse_Mercator



Legal Location: SE 13-31-6-5
File No: PLRDSD20250102

Map Created on: 4/8/2025