

BYLAW NO. LU 16/25

Being a Bylaw of Mountain View County in the Province of Alberta to amend Land Use Bylaw No. 10/24 affecting NE 26-29-4-5 pursuant to the Municipal Government Act.

The Council of Mountain View County, duly assembled, enacts that Bylaw No. 10/24 be amended as follows:

To redesignate from Agricultural District (A) to Agricultural (2) District (A(2)) an approximate thirty-four point seven two (34.72) acres (14.05 hectares) in the Northeast (NE) Quarter of Section twenty-six (26), Township twenty-nine (29), Range four (4), West of the Fifth (5th) Meridian, as outlined on Schedule "A" attached hereto.

Received first reading April 09, 2025,

Received second reading _____,

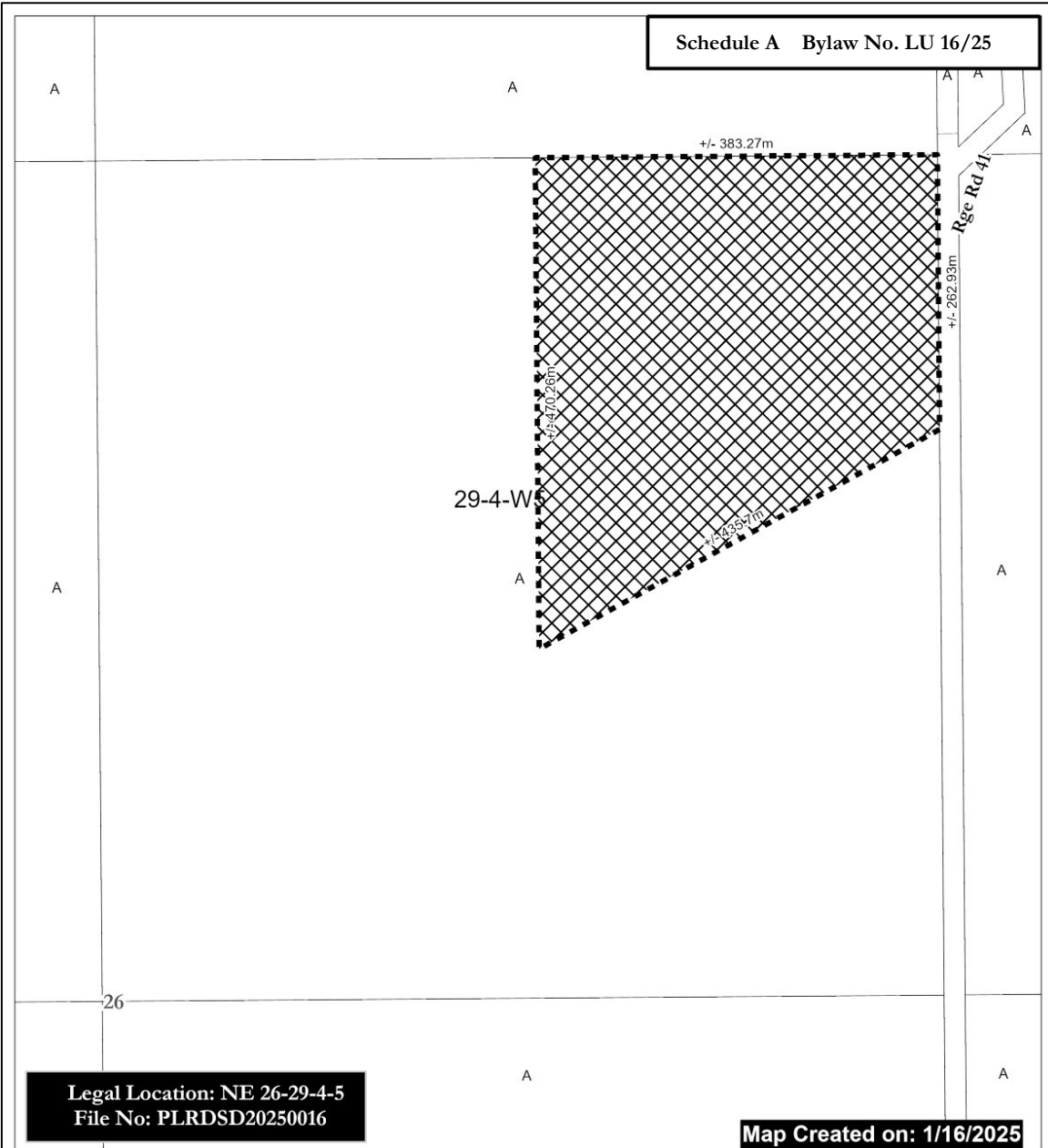
Received third reading _____.

Reeve

Chief Administrative Officer

Date of Signing

Schedule A Bylaw No. LU 16/25



**Legal Location: NE 26-29-4-5
File No: PLRDSD20250016**

Map Created on: 1/16/2025



**From A to A(2)
(+/-) 34.72 ac (14.05Ha)**



A = Agricultural District
A(2) = Agricultural (2) District
R-CR = Country Residential District
R-CR1 = Country Residential (1) District
RF = Residential Farmstead District
C-LC = Local Commercial District
I-BP = Business Park District
I-HI = Heavy Industrial District
P-PC = Parks and Conservation District

P-PR = Parks and Recreation District
P-PCR = Parks and Comprehensive
Recreational District
S-IEC = Institutional, Educational and
Cultural District
S-AP = Airport District
DC = Direct Control
AEP = Aggregate Extraction /
Processing District



0 25 50 Meters

Scale: 1:5,000

Mountain View County

NAD_1983_CSRS_80TM_AEP_Forest
Projection: Transverse_Mercator