

BYLAW NO. LU 35/22

Being a Bylaw of Mountain View County in the Province of Alberta to amend Land Use Bylaw No. 21/21 affecting NE 1-31-5-5 pursuant to the Municipal Government Act.

The Council of Mountain View County, duly assembled, enacts that Bylaw No. 21/21 be amended as follows:

To redesignate from Agricultural District (A) to Country Residential (1) District (R-CR1) an approximate two point five two (2.52) acres (1.02 hectares) in the Northeast (NE) Quarter of Section one (1), Township thirty-one (31), Range five (5), West of the Fifth (5th) Meridian, as outlined on Schedule "A" attached hereto.

Received first reading November 16, 2022,

Received second reading _____,

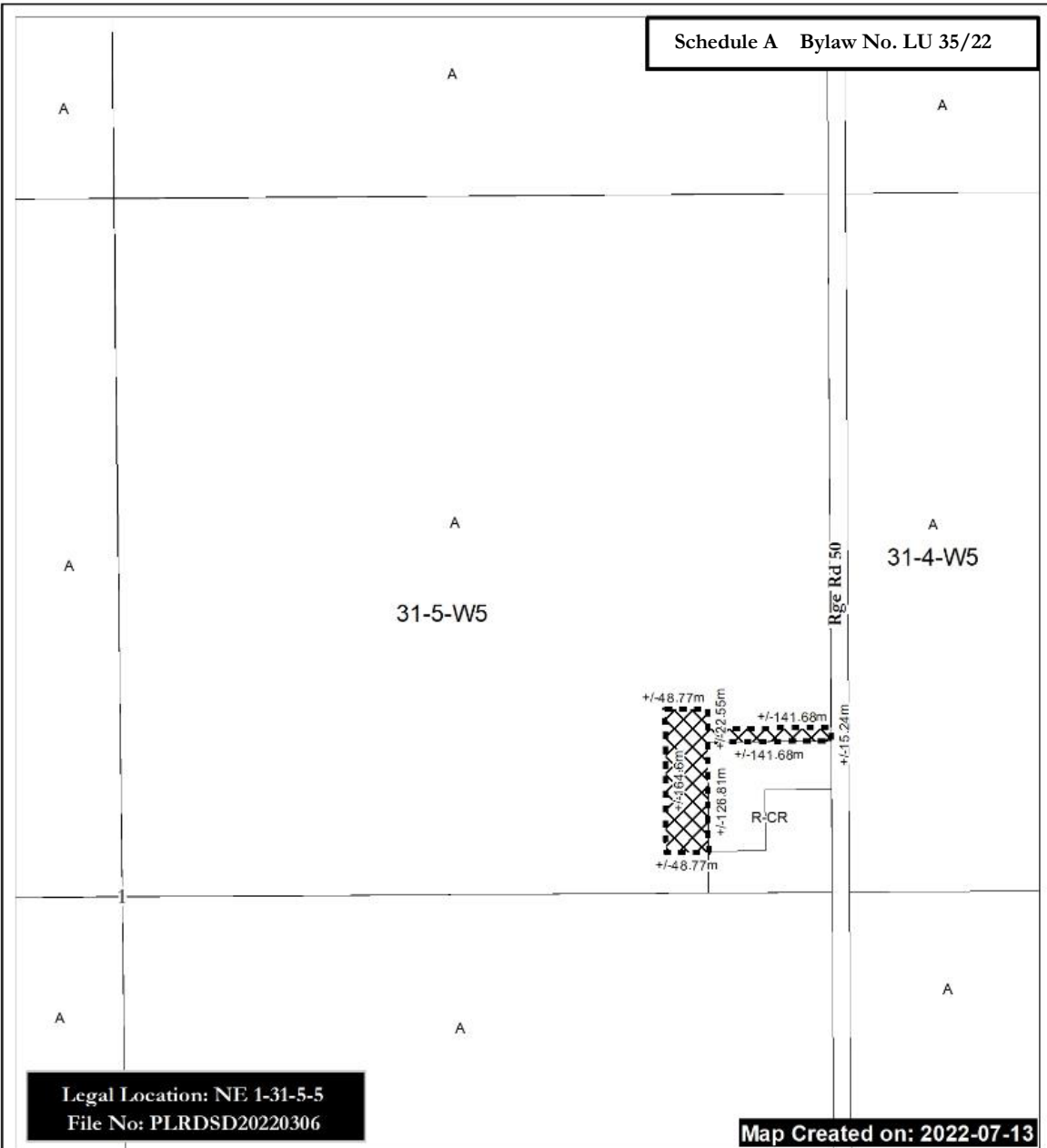
Received third reading _____,

Reeve

Chief Administrative Officer

Date of Signing

Schedule A Bylaw No. LU 35/22



Legal Location: NE 1-31-5-5
File No: PLRDSD20220306

Map Created on: 2022-07-13



From A to R-CR1
(\pm) 2.52 ac (1.02 Ha)



A = Agricultural District
A(2) = Agricultural (2) District
R-CR = Country Residential District
R-CR1 = Country Residential (1) District
RF = Residential Farmstead District
C-LC = Local Commercial District
I-BP = Business Park District
I-HI = Heavy Industrial District

P-PC = Parks and Conservation District
P-PR = Parks and Recreation District
P-PCR = Parks and Comprehensive Recreational District
S-IEC = Institutional, Educational and Cultural District
S-AP = Airport District
DC = Direct Control
AEP = Aggregate Extraction / Processing District



0 25 50 100 Meters

Scale: 1:6,000

Mountain View County

NAD 1983 CSRS 301M AEP Inter
Projection: Transverse_Mercator