

BYLAW NO. LU 20/18

Being a Bylaw of Mountain View County in the Province of Alberta to amend Land Use Bylaw No. 15/15 affecting NE 1-33-2-5 pursuant to the Municipal Government Act.

The Council of Mountain View County, duly assembled, enacts that Bylaw No. 15/15 be amended as follows:

To redesignate from Agricultural District (A) to Aggregate Extraction/Processing District (AEP) an approximate twelve point zero zero (12.00) acres (4.86 Hectares) in the North East (NE) Quarter of Section One (1), Township Thirty-three (33), Range Two (2), West of the Fifth (5th) Meridian, as outlined on Schedule "A" attached hereto.

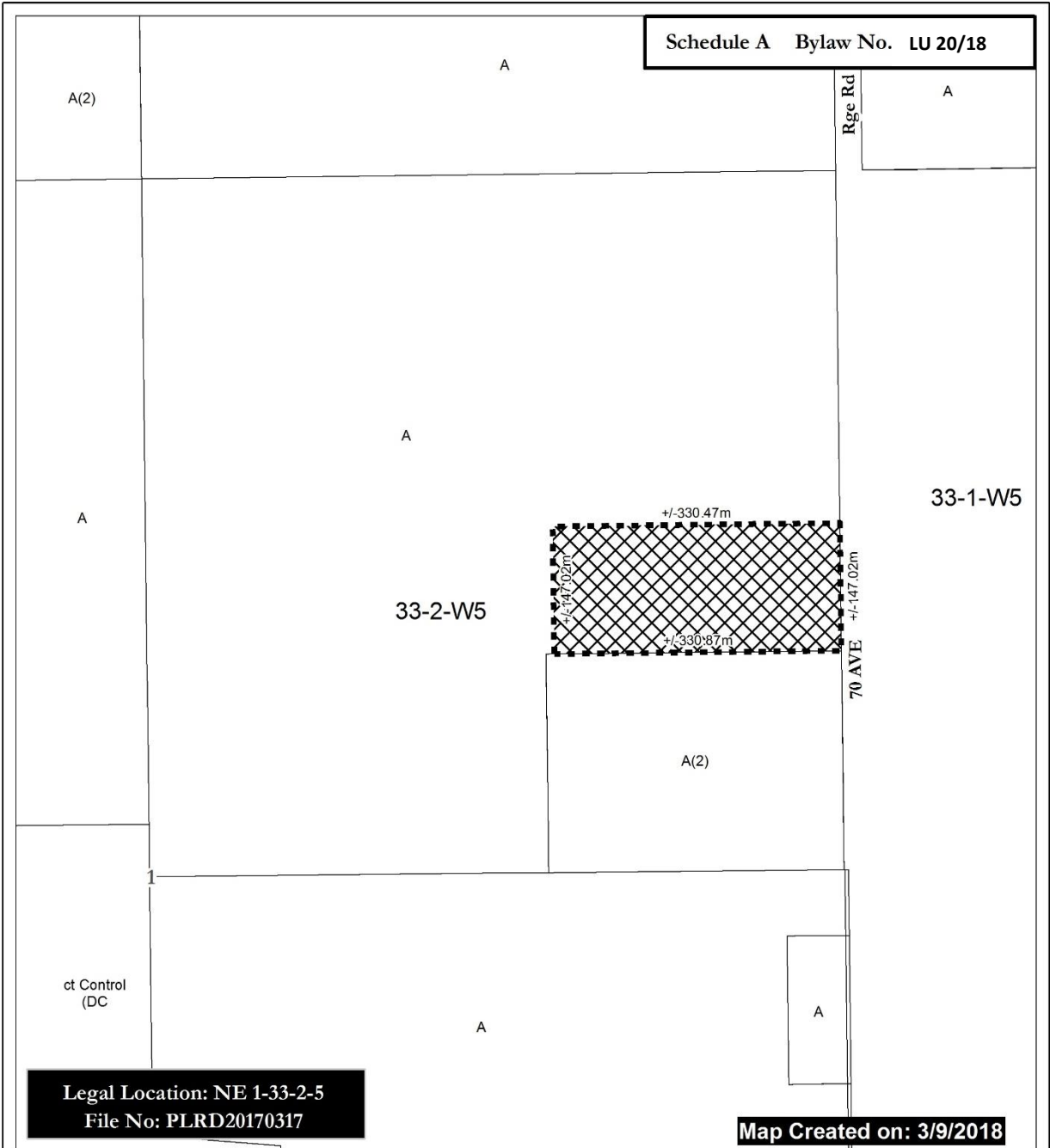
Received first reading April 11, 2018.

Reeve

Chief Administrative Officer


Date of Signing

Schedule A Bylaw No. LU 20/18



Legal Location: NE 1-33-2-5
File No: PLRD20170317

Map Created on: 3/9/2018

 From A to AEP
(+/- 12.00 ac)



- A = Agricultural District
- A(2) = Agricultural (2) District
- R-CR = Country Residential District
- R-CR1 = Country Residential (1) District
- RF = Residential Farmstead District
- C-LC = Local Commercial District
- I-BP = Business Park District
- I-HH = Heavy Industrial District

- P-PC = Parks and Conservation District
- P-PR = Parks and Recreation District
- P-PCR = Parks and Comprehensive Recreational District
- S-IEC = Institutional, Educational and Cultural District
- S-AP = Airport District
- DC = Direct Control
- AEP = Aggregate Extraction / Processing District

