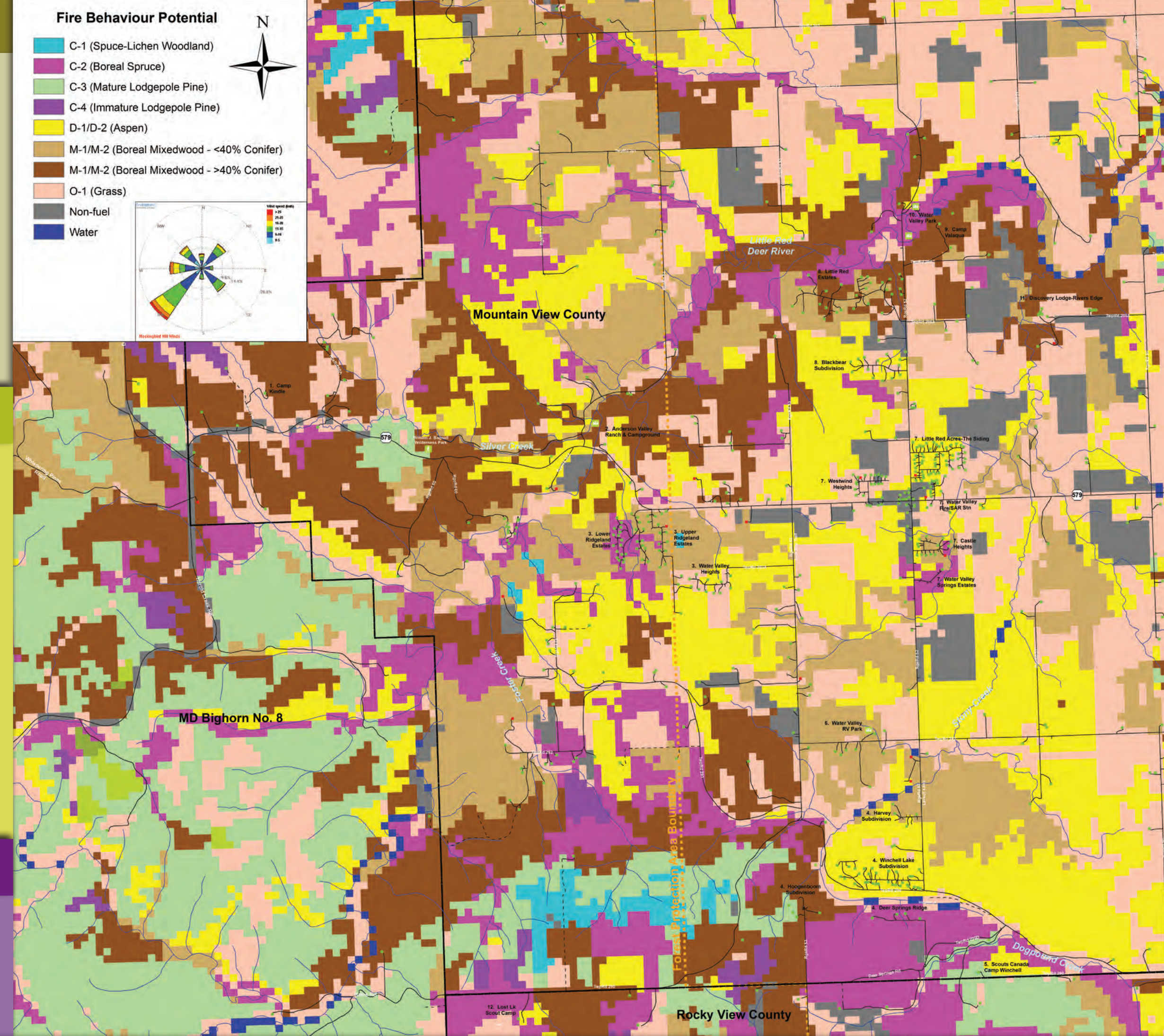


# MOUNTAIN VIEW COUNTY COMMUNITY WILDFIRE PRE-PLAN

## RISK ASSESSMENT

Function	Apparatus/Equipment
<b>Wildland Fire Behavior</b>	<ul style="list-style-type: none"> <li>Significant pine (C-3), spruce (C-2) and mixed wood (M-1&gt;50%) in western portion of area</li> <li>Predominant winds from SW</li> </ul>
<b>Structural</b>	<ul style="list-style-type: none"> <li>Scattered homes with combustible roofing materials</li> <li>Multiple homes with combustible siding materials</li> <li>Multiple homes lacking Zone 1-2 clearance</li> </ul>
<b>Infrastructure</b>	<ul style="list-style-type: none"> <li>Several locked private gates</li> <li>Several narrow/long private driveways through heavy coniferous fuel with poor turn-arounds</li> <li>Unrated private bridges on some private properties</li> <li>Overhead distribution and service powerlines throughout</li> <li>Scattered propane and overhead fuel tanks on rural properties</li> </ul>



## AUTO ORDER LIST

Note: This list is for minimum resource requirements in the first operational period of a Rank 4+ interface fire and is based on probable fire spread/behavior and anticipated values at risk. More and/or specialized resources may be required and should be requested immediately if warranted.

Function	Apparatus/Equipment	Manpower
<b>Evacuation</b>		10 - Enforcement Personnel (RCMP/CPO's)
<b>Structure Protection</b>	2 - Structural Engines (T1/T2) 2 - Wildland Engines (T5/T6) 2 - Water Tenders (T2/S2) 1 - Sprinkler Trailer (30 homes)	2 - Structure/Site Prep Crews
<b>Wildfire</b>	2 - Airtanker Groups 2 - Dozer Units 1 - Medium Helicopter (T2) c/w bucket	2 - Type 1 Crews c/w Intermediate (T3) Helicopter

## STAGING AREAS

Map #	Name	Lat/Long	Location
S1	Water Valley Staging	51° 32.304' 114° 36.615'	Water Valley Fire/SAR Station 5165 - Hwy 579

## VALUES AT RISK/FIRE OPERATIONS

Map #	VALUES AT RISK					FIRE OPERATIONS				COMMENTS	
	Value Name	Value Type(s)	Lat/Long	No. of People Onsite	Total	Number of Structures		Strategy(s)	Tactic(s)		Water Source
						Non-Comb	Combustible				
1	Camp Kindle 29479 - Rge Td. 61A 403-637-3975	Youth Camp	51° 31.162' 114° 44.283'	100+	12	12	0	Protect Onsite	<ul style="list-style-type: none"> <li>Youth Camp - evacuate campers early</li> <li>Sprinkler structures from creek and pond</li> <li>Patrol with engines for spot fires</li> </ul>	Silver Creek	
2	Anderson Valley Ranch & Campground 5442 - Hwy. 579 403-637-3737	Trail Rides and Campground	51° 30.748' 114° 40.268'	50 - 100	2	2	0	Retreat & Return	<ul style="list-style-type: none"> <li>Sprinkler structures from relay tanks</li> <li>Post-impingement patrol for spot fires</li> </ul>	Little Red Deer River	<ul style="list-style-type: none"> <li>Special:               <ul style="list-style-type: none"> <li>Livestock on site</li> </ul> </li> </ul>
3	Upper & Lower Ridgeland Estates 5413 & 5417 - Hwy. 579 Water Valley Heights 5341 - Twp Rd. 293A	Country Residential Subdivisions	51° 29.912' 114° 39.494'	100+	59	58	1	Retreat & Return	<ul style="list-style-type: none"> <li>Sprinkler structures from relay tanks</li> <li>Post-impingement patrol for spot fires</li> </ul>	None	<ul style="list-style-type: none"> <li>Upper and Lower Ridgeland Estates - Extreme hazard subdivisions               <ul style="list-style-type: none"> <li>Dense coniferous fuel type</li> <li>Mid to upper-slope position</li> <li>Lack of Zone 1 - 2 clearance</li> </ul> </li> </ul>
4	Deer Springs Ridge 29040 - Rge Rd. 52C Winchell Lake Subdivision 29066 - Rge Td. 52/5242 - Twp Rd. 290 Harvey Subdivision 29130 - Rge Rd. 52 Hoogenboom Subdivision 29042 - Rge Rd. 53	Country Residential Subdivisions	51° 27.487' 114° 37.190'	100+	48	48	0	Retreat & Return	<ul style="list-style-type: none"> <li>Sprinkler structures from relay tanks or Winchell Lake</li> <li>Post-impingement patrol for spot fires</li> </ul>	None Winchell Lake	
5	Scouts Canada Camp Winchell 5142 - Twp Rd. 290C 403-637-2117	Youth Camp	51° 26.777' 114° 36.045'	50 - 100	3	3	0	Retreat & Return	<ul style="list-style-type: none"> <li>Youth Camp - evacuate campers early</li> <li>Sprinkler structures from relay tanks</li> <li>Post-impingement patrol for spot fires</li> </ul>	None	
6	Water Valley RV Park 5240 - Twp Rd. 290C	RV Park 29 sites	51° 28.566' 114° 37.163'	50 - 100	1	1	1	Retreat & Return	<ul style="list-style-type: none"> <li>Evacuate campers</li> <li>Sprinkler shower building from relay tanks</li> <li>Patrol with engines for spot fires</li> </ul>	None	
7	Water Valley Little Red Acres/The Siding 29415 - Rge Td. 52 Westwind Heights 5228 - Hwy. 579 Castel Lane 29347 - Rge Rd. 52 Water Valley Springs Estates 29327 - Rge Rd. 52	Country Residential Subdivisions	51° 30.233' 114° 36.657'	200+	124	120	4	Protect Onsite		None	<ul style="list-style-type: none"> <li>Hazardous:               <ul style="list-style-type: none"> <li>Water Valley Waste Transfer Station</li> </ul> </li> <li>Critical Infrastructure:               <ul style="list-style-type: none"> <li>Water Valley Station - Fire/SAR</li> </ul> </li> <li>Special:               <ul style="list-style-type: none"> <li>Water Valley Cemetery</li> </ul> </li> </ul>
8	Blackbear Subdivision 29508 - Rge Rd. 52 Little Red Estates 29542 - Rge Rd. 52	Country Residential Subdivisions	51° 31.514' 114° 37.008'	50 - 100	41	41	0	Retreat & Return & Protect Onsite	<ul style="list-style-type: none"> <li>Sprinkler structures from relay tanks</li> <li>Protect Onsite - Patrol with engines for spot fires in Blackbear Subdivision</li> <li>Retreat &amp; Return - Post-impingement patrol for spot fires in Little Red Estates</li> </ul>	None	<ul style="list-style-type: none"> <li>Critical Infrastructure:               <ul style="list-style-type: none"> <li>Cochrane Lake Gas Coop Metering Stn. 403-932-2707</li> </ul> </li> </ul>
9	Camp Valaqua 5164 - Twp Rd. 300 403-637-2510	Youth Camp	51° 32.228' 114° 36.217'	50 - 100	17	17	0	Retreat & Return	<ul style="list-style-type: none"> <li>Youth Camp - evacuate early</li> <li>Sprinkler structures from Little Red Deer River</li> <li>Post-impingement patrol for spot fires</li> </ul>	Little Red Deer River	
10	Water Valley Park Rge Rd. 52	Campground	51° 32.304' 114° 36.615'	50 - 100	1	1	0	No Action	<ul style="list-style-type: none"> <li>Evacuate campers early</li> </ul>		
11	Discovery Lodge - Rivers Edge Bible Camp 5066/5038 - Twp Rd. 295A 403-637-2766	Youth Camp	51° 31.584' 114° 34.751'	200+	24	24	0	Protect Onsite	<ul style="list-style-type: none"> <li>Youth Camp - evacuate early</li> <li>Sprinkler structures from relay tanks</li> <li>Patrol with engines for spot fires</li> </ul>	None	
12	Scouts Canada Lost Lake Scout Camp NE31 - Twp 28 - Rge 5 - W5M	Youth Camp	51° 26.542' 114° 41.443'	<50	3	3	0	Retreat & Return	<ul style="list-style-type: none"> <li>Youth Camp - evacuate early</li> <li>Sprinkler structures from Lost Lake</li> <li>Post-impingement patrol for spot fires</li> </ul>	Lost Lake	

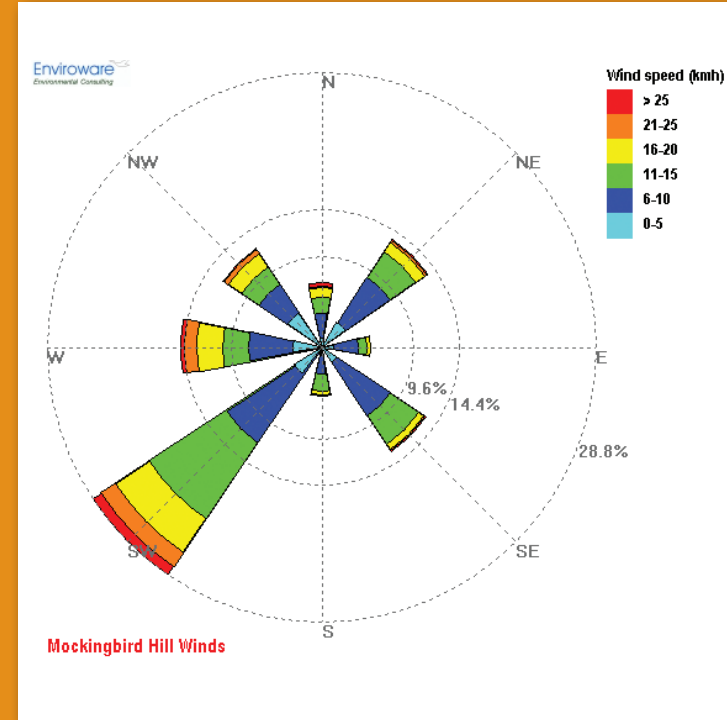
## COMMUNICATIONS

Command Frequency(s)				
Type	Channel Name	Tone (Hz)	Receive (MHz)	Transmit (MHz)
Command Primary	Prov. Mutual Aid Fire	N/A	156.855	156.855
Tactical Frequency(s)				
Type	Channel Name	Tone (Hz)	Receive (MHz)	Transmit (MHz)
STRUCTURE PROTECTION (Mountain View County)				
Primary	TBD at fire			
WILDFIRE (ERSD)				
FireNet	Mockingbird 222	173.8	152.555	157.815
Primary	FireLine 38	88.5	151.115	151.115
Secondary	FireLine 36	88.5	151.070	151.070
Heavy Equipment	FireLine 11	100.0	152.390	152.390

## WATER TENDER SUPPLY

Map #	Name	Lat/Long	Type	Delivery Method
T1	Water Valley Stn. 5165 - Hwy 579	51° 32.309' 114° 36.615'	Underground Tank - 50,000 litres (slow recharge rate)	Draft <3m
T2	Water Valley Park	51° 32.251' 114° 36.616'	Little Red Deer River	Draft 3-6m
T3	Rge Rd. 54 North 30156 - Rge Rd. 54	51° 33.480' 114° 39.467'	Un-Named Creek	Draft 3-6m
T4	Rge Rd. 54 South	51° 31.153' 114° 39.604'	Little Red Deer River	Draft 3-6m
T5	Anderson Valley Ranch	51° 30.781' 114° 40.295'	Little Red Deer River	Draft 3-6m
T6	Silver Creek	51° 30.930' 114° 43.296'	Silver Creek	Draft 3-6m
T7	Laveck Lane 29166 - Rge Rd. 52	51° 28.139' 114° 36.826'	Pond	Draft 3-6m
T8	Stony Creek Rge Rd. 52A	51° 27.729' 114° 37.799'	Stony Creek	Draft <3m
T9	Winchell Lake	51° 27.323' 114° 36.483'	Winchell Lake	Draft 3-6m
T10	Bates Bar J Ranch	51° 26.787' 114° 43.501'	Lake Red Deer River	Draft 3-6m

Mockingbird Hill Windrose  
(April - October)



**MONTANE**  
Forest Management Ltd.

Stew Walkinshaw  
Canmore, AB  
(403) 678-7054  
montane@shaw.ca

© Copyright 2008-2013  
Montane Forest Mgt. Ltd.  
All Rights Reserved



WATER VALLEY AREA  
Community Wildfire Pre-Plan



LEGEND

**Jurisdictional Boundaries**

- County/MD Boundary
- - - Forest Protection Area Boundary

**Values at Risk**

- Non-Combustible Roof
- Combustible Roof
- Critical Infrastructure Site
- Hazardous Site
- Special Site
- Campground
- Day Use Area
- Trailhead

**Access**

- All-Weather/Improved
- - - Emerg Access/Unimproved

**Fire Operations**

- Ⓢ Staging Area
- Ⓣ Water Tender Source (Draft)

