

BERGEN AREA WILDFIRE PREPAREDNESS GUIDE

RISK ASSESSMENT

Feature	Item
Wildland Fire Behavior	<ul style="list-style-type: none"> Primarily cultivated fields, mixed wood, deciduous, and cured-grass fuels with scattered spruce/pine fuel types along creeks and in west-side of area Predominant and strongest winds from the Southwest and Southeast Topography is rolling
Structural	<ul style="list-style-type: none"> Scattered structures with combustible roofing and inadequate Zone 1 and 2 defensible space
Infrastructure	<ul style="list-style-type: none"> Several long, narrow driveways through coniferous and mixedwood fuels Scattered propane tanks Overhead distribution powerlines Limited water-tender sources Sour-gas facilities throughout the area

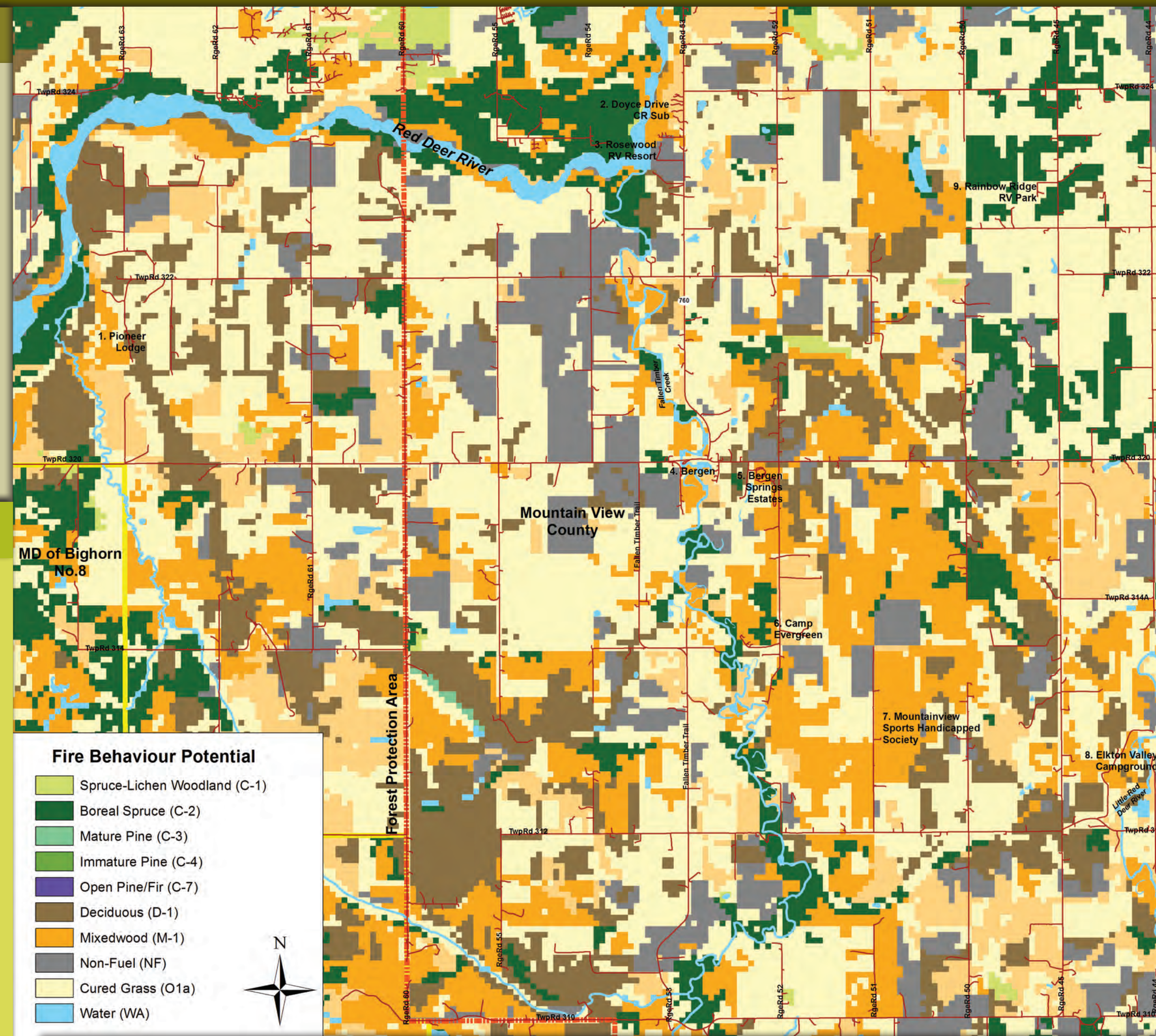
AUTO ORDER LIST

Note: This list is for minimum resource requirements in the **first operational period** and is based on probable fire spread/behavior and anticipated values at risk. More and/or specialized resources may be required and should be requested immediately if warranted.

Function	Apparatus/Equipment	Manpower
Evacuation		10 - Enforcement personnel (RCMP/CPO's) 4 - Roadblock personnel
Structure Protection	2 - Structural Engines (T1-T2) 2 - Wildland Engines (T3-T6) 2 - Water Tenders (T1, S1-S2) 1 - Sprinkler Trailer (30 structures)	2 - Structure/Site Prep Crews (4 persons each)
Wildfire	1 - Medium Helicopter (T2) c/w bucket 2 - Intermediate Helicopters (T3) 2 - Air Tanker Groups 2 - Dozer Units	2 - Fire Crews (T1)

STAGING AREAS

Map #	Name	Lat/Long	Location
S1	Bergen Staging	51° 42.350' 114° 36.584'	Mountain View County Gravel Pit – South-side of Bergen Rd (Twp Rd 320)



SAFE REFUGE AREAS

Map#	Name	Lat/Long	Location
SR1	Pioneer Lodge	51° 43.611' 114° 46.429'	Field to east of Camp
SR2	Camp Evergreen	51° 40.670' 114° 37.057'	Field to south of Camp access road
SR3	Mountainview Sports Handicapped Society	51° 39.911' 114° 35.672'	Field to west of Camp entrance

COMMUNICATIONS

COMMAND FREQUENCY(S)				
Type	Channel Name	Tone (Hz)	Receive (MHz)	Transmit (MHz)
Primary	Prov. Mutual-Aid Fire	N/A	156.855	156.855
TACTICAL FREQUENCY(S)				
Type	Channel Name	Tone (Hz)	Receive (MHz)	Transmit (MHz)
Evacuation				
Primary	To be determined at fire			
Structure Protection				
Primary	To be determined at fire			
Wildfire				
Primary	FireNet 224	173.8	152.585	157.845
Secondary	FireLine 41	88.5	153.050	153.050
Air to Ground	FireLine 43	88.5	162.210	162.210

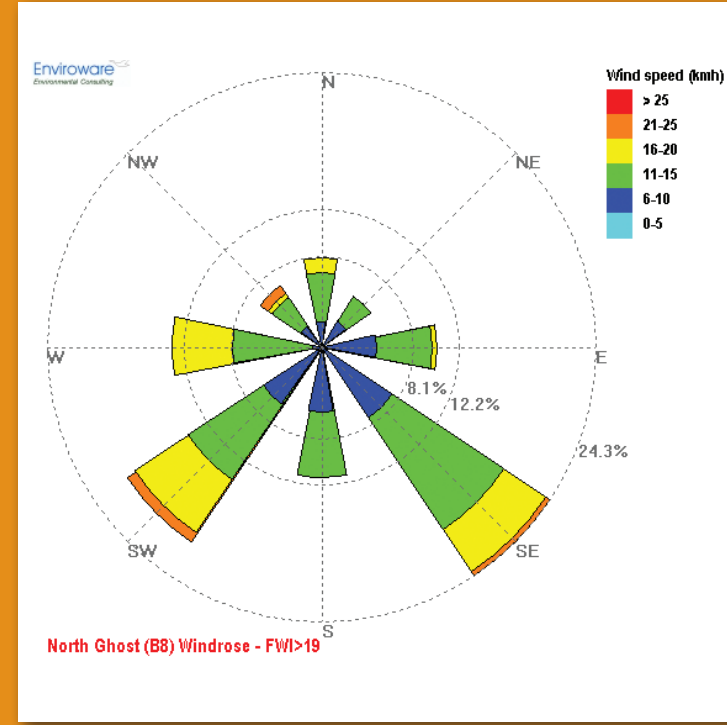
WATER SUPPLY

Map #	Name	Lat/Long	Type	Delivery Method
T1	Elkton	51° 38.932' 114° 31.789'	Little Red Deer River	Draft >6m
T2	Fallen Timber Creek	51° 38.933' 114° 36.944'	Fallen Timber Creek	Draft 3-6m
T3	Rge Rd 60	51° 38.198' 114° 42.613'	Un-Named Creek	Draft 3-6m
T4	Davidson Park	51° 42.447' 114° 38.259'	Fallen Timber Creek	Draft >6m
T5	Twp Rd 314	51° 40.720' 114° 46.398'	Un-Named Creek	Draft 3-6m
T6	Bergen Springs Estates	51° 42.194' 114° 37.422'	Dry Hydrant	Draft <3m

VALUES AT RISK/FIRE OPERATIONS

Map #	VALUES AT RISK					FIRE OPERATIONS			COMMENTS		
	Value Name	Value Type(s)	Lat/Long	No. of People Onsite	Number of Structures		Strategy(s)	Tactic(s)		Water Source	
					Total	Roof Type					
					Non-Comb	Combustible					
1	Pioneer Lodge 32134 – Rge Rd 63 403-638-2660	Youth Camp	51° 43.413' 114° 46.753'	100 - 125	9	9	0	Protect Onsite	<ul style="list-style-type: none"> Engine patrol for spot fires Sprinkler Staff houses and Outbuildings from pond and Lodge and Cabins from swimming pool 	Pond Swimming Pool	<ul style="list-style-type: none"> Special – Youth Camp – Evacuate early
2	Doyce Drive CR Subdivision 32342-32376 - Hwy 760	Dwellings	51° 45.701' 114° 38.364'	25 - 50	13	13	0	Retreat & Return	<ul style="list-style-type: none"> Sprinkler structures from Red Deer River 	Red Deer River	
3	Rosewood RV Resort 32322 – Hwy 760 403-638-4694	RV Park (155 sites)	51° 45.393' 114° 38.633'	200+	2	2	0	Protect Onsite	<ul style="list-style-type: none"> Engine patrol for spot fires Sprinkler structures from Red Deer River 	Red Deer River	
4	Bergen Twp Rd 320 / Hwy 760	Dwellings	51° 42.488' 114° 38.032'	25 - 50	19	18	1	Protect Onsite	<ul style="list-style-type: none"> Sprinkler structures from Fallen Timber Creek 	Fallen Timber Creek	<ul style="list-style-type: none"> Special – Bergen Cemetery Infrastructure – Bergen Community Hall
5	Bergen Springs Estates 3227 – Twp Rd 320	Cabins and RV's	51° 42.379' 114° 37.374'	200+	115	115	0	Protect Onsite (West) Retreat & Return (East)	<ul style="list-style-type: none"> Engine patrol for spot fires (West) Foam with Engines and/or sprinkler from pond (East) 	Pond Dry Hydrant	<ul style="list-style-type: none"> Hazardous – Narrow access roads through subdivision
6	Camp Evergreen 31404 – Rge Rd 52 403-638-4230	Youth Camp	51° 40.816' 114° 37.510'	200+	18	18	0	Retreat & Return	<ul style="list-style-type: none"> Sprinkler structures from Fallen Timber Creek 	Fallen Timber Creek	<ul style="list-style-type: none"> Special – Youth Camp and Livestock – Evacuate early
7	Mountain View Sports Handicapped Society 31301 – Rge Rd 51 403-637-2702	Youth Camp	51° 39.858' 114° 35.442'	10 - 25	3	3	0	Retreat & Return	<ul style="list-style-type: none"> Sprinkler structures from relay tanks 	None	<ul style="list-style-type: none"> Special – Camp for physically and mentally challenged – Evacuate early
8	Elkton Valley Campground 31250 – Rge Rd 44 403-335-8099	Campground (130 sites)	51° 39.648' 114° 31.359'	>200	4	4	0	Protect Onsite	<ul style="list-style-type: none"> Engine patrol for spot fires Sprinkler structures from river 	Little Red Deer River	
9	Rainbow Ridge RV Park 32280 – Rge Rd 45 403-638-4036	RV Park (57 sites)	51° 44.921' 114° 32.949'	100 - 150	6	6	0	Protect Onsite	<ul style="list-style-type: none"> Engine patrol for spot fires Sprinkler structures from pond 	Pond	

North Ghost (B8)
Windrose



MONTANE
Forest Management Ltd.

Stew Walkinshaw
Canmore, AB
(403) 678-7054
montane@shaw.ca

© Copyright 2008-2016
Montane Forest Mgt. Ltd.
All Rights Reserved



BERGEN AREA
Wildfire Preparedness Guide



LEGEND

- Jurisdictional Boundaries**
- County/MD/IR Boundary
 - Forest Protection Area Boundary
- Values at Risk**
- Non-Combustible Roof
 - Combustible Roof
 - Critical Infrastructure Site
 - Hazardous Site
 - Special Site
 - Campground
 - Day Use Area
 - Trailhead
 - Backcountry Campground
- Access**
- All-Weather/Improved
 - Driveway/Unimproved
- Fire Operations**
- Staging Area
 - Water Tender Source (Draft)
 - Hydrant
 - Safe Refuge Area
 - Helibase
 - Fuelbreak

